

COMPUTER
RECORDED
COMPARED

FILED NO. **2910**

BOOK **2** PAGE **314**

97 APR 23 PM 4: 10

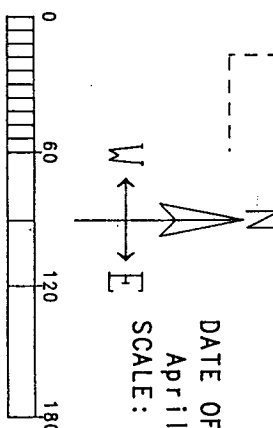
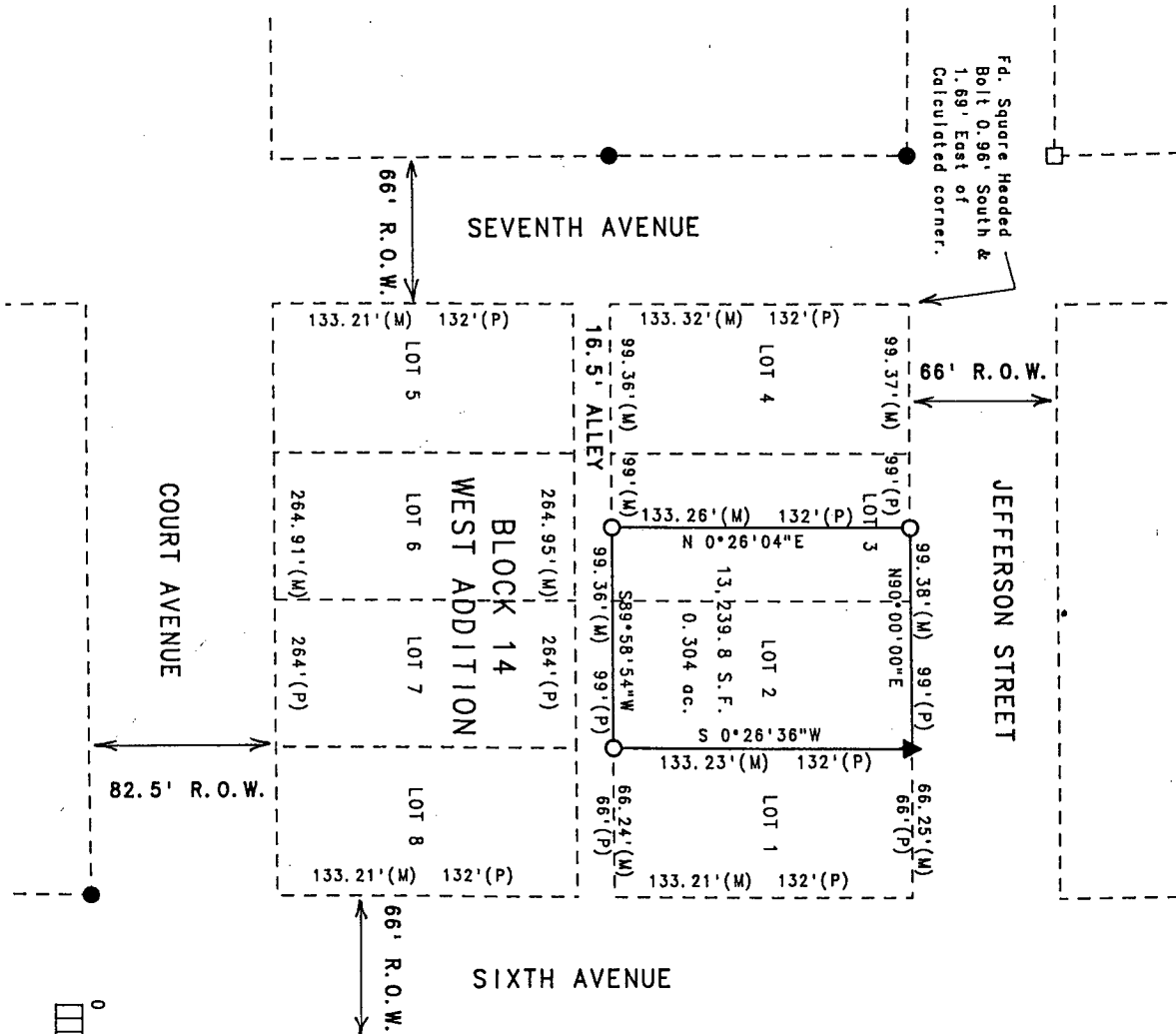
REC. \$ 5.00
A.D.P. _____
R.M.F. \$ 1.00

MICHELLE UTSLER
RECORDER
MADISON COUNTY, IOWA

VANCE & HOCHSTETLER, P.C. CONSULTING ENGINEERS, WINTERSET, IOWA (515)462-3995

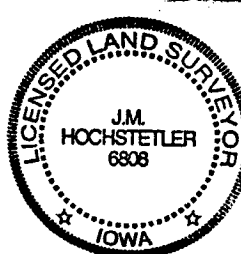
CHARLES T. VANCE, 110 WEST GREEN ST., WINTERSET, IOWA 50273
JAMES M. HOCHSTETLER, 110 WEST GREEN ST., WINTERSET, IOWA 50273

A PLAT OF SURVEY FOR LISA MARTIN OF LOT 2 AND THE EAST HALF OF LOT 3 OF BLOCK 14 OF THE WEST ADDITION TO THE CITY OF WINTERSET, MADISON COUNTY, IOWA.



DATE OF SURVEY:
April 15, 1997
SCALE: 1" = 60'

- LEGEND
- FD. CIR #5041
 - FD. CIR #6808
 - Fd. Nail
 - ▲ Set CIR #6808
 - Cut "X" in Sidewalk
 - Calc. Lot Line
 - (M) Measured Dimension
 - (P) Platted Dimension



I hereby certify that this land surveying document was prepared and the related survey work was performed by me or under my direct personal supervision and that I am a duly licensed Land Surveyor under the laws of the State of Iowa.

J.M. Hochstetler
J.M. HOCHSTETLER
License number 6808
Date 4/17/97
My license renewal date is December 31, 1997.
Pages or sheets covered by this seal: 1