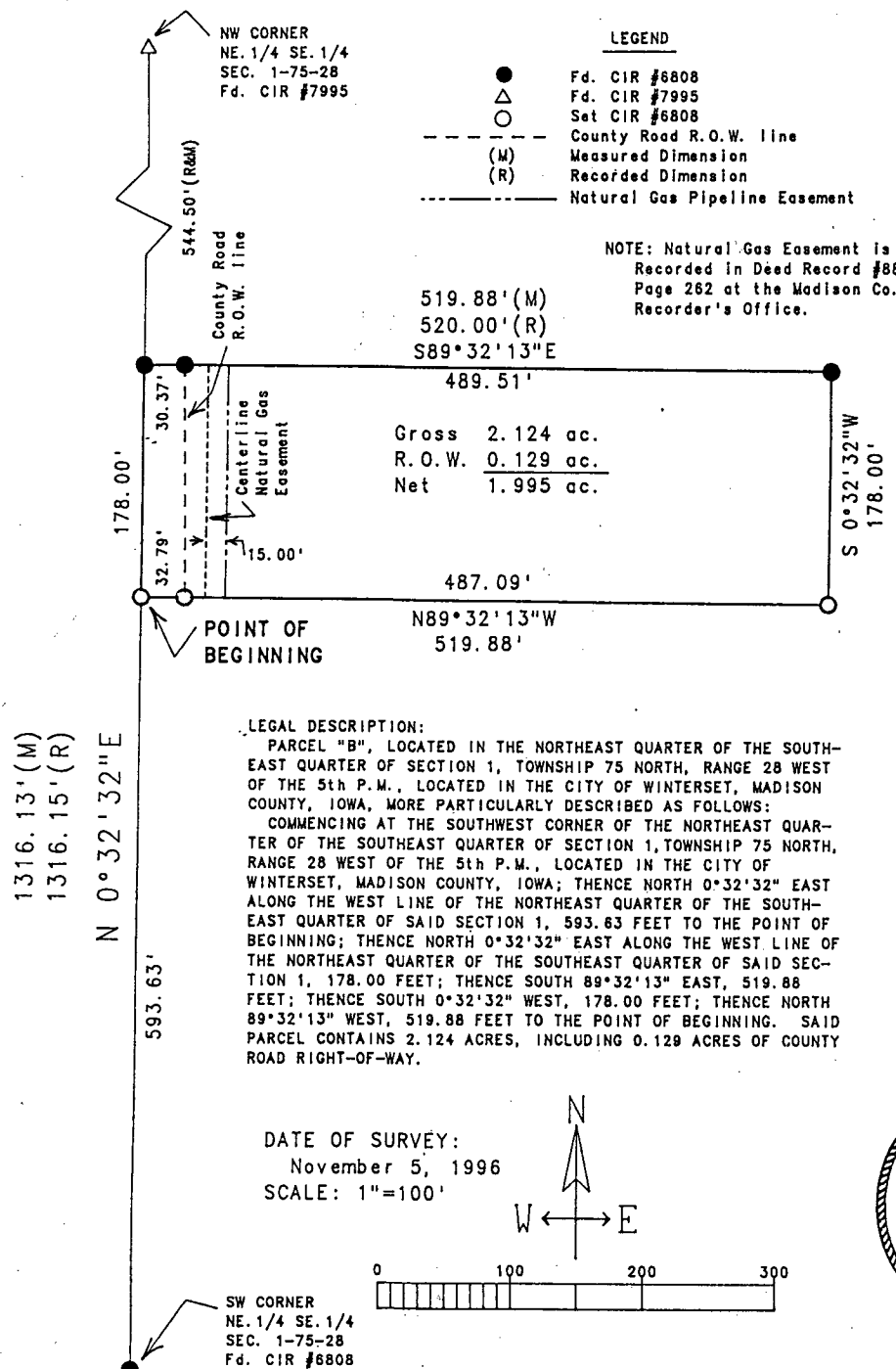


COMPUTER ✓
RECORDED ✓
COMPARED ✓

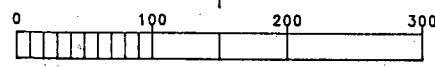
VANCE & HOCHSTETLER, P.C. CONSULTING ENGINEERS, WINTERSET, IOWA (515)462-3995

CHARLES T. VANCE, 110 WEST GREEN ST., WINTERSET, IOWA 50273
JAMES M. HOCHSTETLER, 110 WEST GREEN ST., WINTERSET, IOWA 50273

A PLAT OF SURVEY FOR GARY LARSON IN THE NORTHEAST QUARTER OF THE SOUTHEAST QUARTER OF SECTION 1, TOWNSHIP 75 NORTH, RANGE 28 WEST OF THE 5th P.M., LOCATED IN THE CITY OF WINTERSET, MADISON COUNTY, IOWA.



DATE OF SURVEY:
November 5, 1996
SCALE: 1"=100'



I hereby certify that this is a true and correct surveying document was prepared by me or under my direct supervision and that I am a duly Registered Land Surveyor under the laws of the State of Iowa.

Signature: *J.M. Hochstetler*
J.M. Hochstetler

Date: 11/8/96 Reg. No. 6808
(Month, day, year)

My registration renewal date is December 31, 1997