

REC 500
AUD C
R.M.F. 3 102

FILED NO. 1467
BOOK 2 PAGE 304

96 NOV 26 PM 2:28

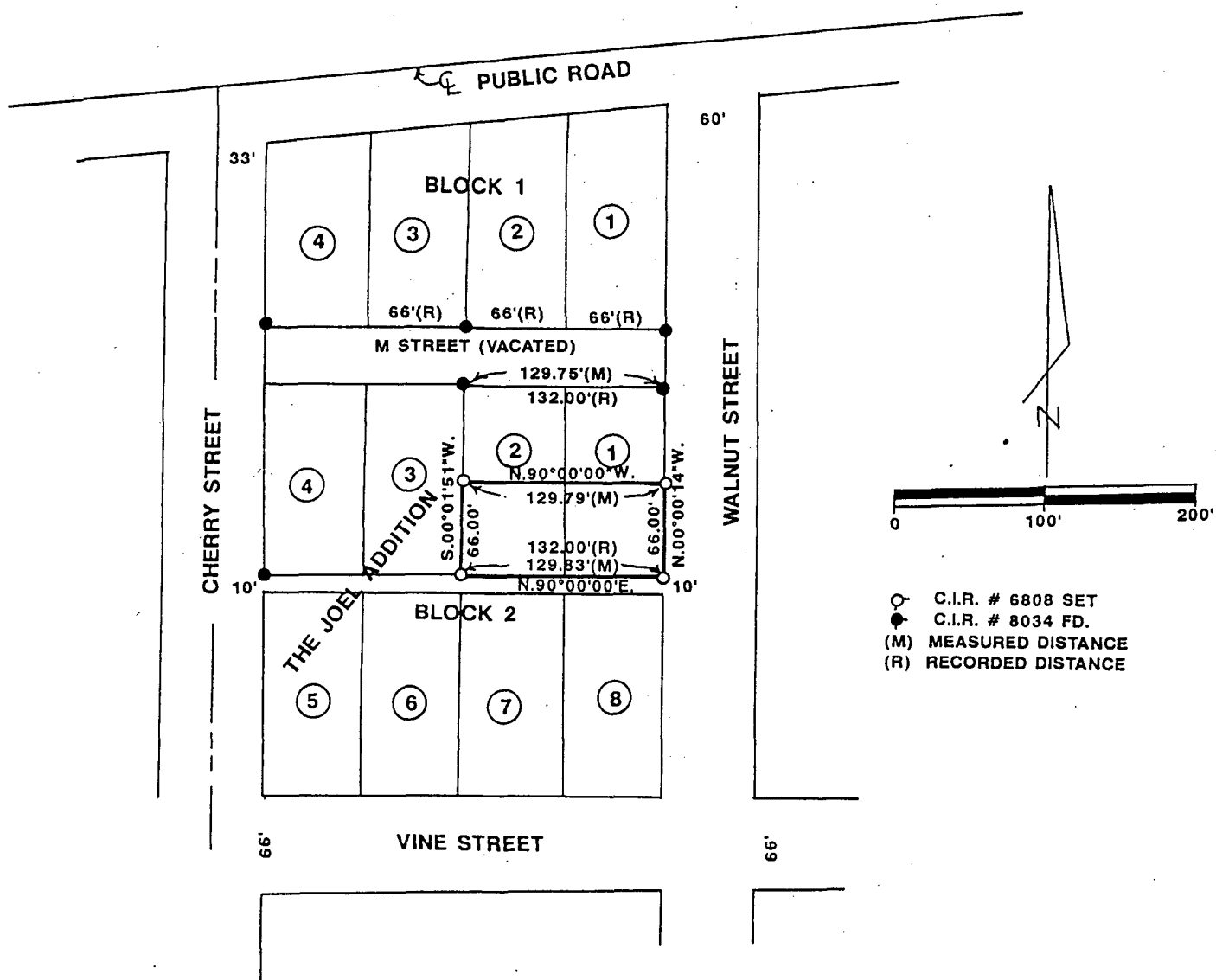
COMPUTER ✓
RECORDED ✓
COMPARED ✓

MICHELLE UTSLER
RECORDER
MADISON COUNTY, IOWA

VANCE & HOCHSTETLER, P.C. CONSULTING ENGINEERS, WINTERSET, IOWA (515)462-3995

CHARLES T. VANCE, 110 WEST GREEN ST., WINTERSET, IOWA 50273
JAMES M. HOCHSTETLER, 110 WEST GREEN ST., WINTERSET, IOWA 50273

PLAT OF SURVEY FOR JERRY BANKS OF THE SOUTH HALF OF LOTS 1 & 2 IN BLOCK 2
OF THE JOEL ADDITION TO THE TOWN OF ST. CHARLES, MADISON COUNTY, IOWA.



- C.I.R. # 6808 SET
- C.I.R. # 8034 FD.
- (M) MEASURED DISTANCE
- (R) RECORDED DISTANCE

LEGAL DESCRIPTION:

THE SOUTH HALF OF LOTS 1 AND 2 IN BLOCK 2 OF THE JOEL ADDITION
TO THE TOWN OF ST. CHARLES, MADISON COUNTY, IOWA.



I hereby certify that this land surveying document was prepared by me or under my direct supervision and that I am a duly Registered Land Surveyor under the laws of the State of Iowa.

Signature: *J.M. Hochstetler*

Date: 11/26/96 Reg. No. 6808
(Month, day, year)

My registration renewal date is December 31, 1997