

REC 500  
ADDL  
R.M.F. \$ 100

FILED NO. 1289

BOOK 2 PAGE 302

96 NOV -7 PM 2:24

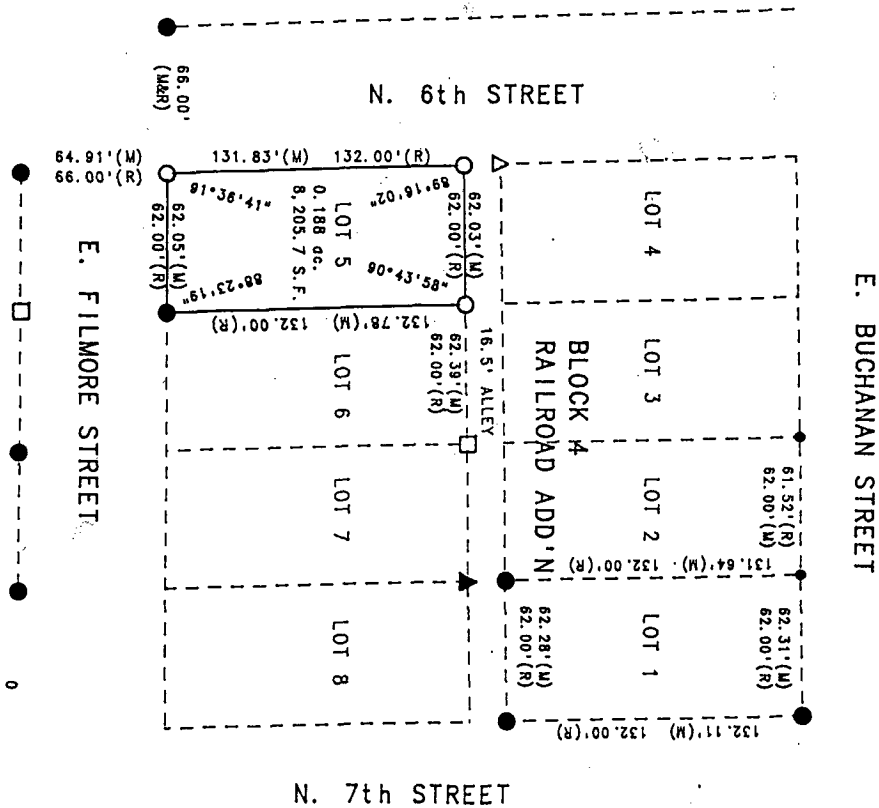
COMPUTER ✓  
RECORDED ✓  
COMPARED ✓

MICHELLE UTSLER  
RECORDER  
MADISON COUNTY, IOWA

VANCE & HOCHSTETLER, P.C. CONSULTING ENGINEERS, WINTERSSET, IOWA (515)462-3995

CHARLES T. VANCE, 110 WEST GREEN ST., WINTERSSET, IOWA 50273  
JAMES M. HOCHSTETLER, 110 WEST GREEN ST., WINTERSSET, IOWA 50273

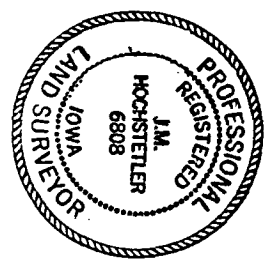
A PLAT OF SURVEY FOR AVA BOYLE OF LOT 5 OF BLOCK 4 OF THE RAILROAD ADDITION TO THE CITY OF WINTERSSET, MADISON COUNTY, IOWA.



LEGEND

- Fd. CIR #5041
- Fd. 1/2" Iron Pin
- Fd. 1/4" Iron Pin
- ▲ Fd. CIR #2 (Unreadable)
- Set CIR #6808
- (R) Recorded Dimension
- (M) Measured Dimension

DATE OF SURVEY:  
October 30, 1996  
SCALE: 1"=60'



I hereby certify that this land surveying document was prepared by me or under my direct supervision and that I am a duly Registered Land Surveyor under the laws of the State of Iowa.

Signature: *J.M. Hochstetler*

Date: 11/19/96 J.M. Hochstetler Reg. No. 6808  
(Month, day, year)

My registration renewal date is December 31, 1997

