

COMPUTER
RECORDED
COMPARED
REC. \$ 5.00
AUD. \$
R.M.F. \$ 1.00

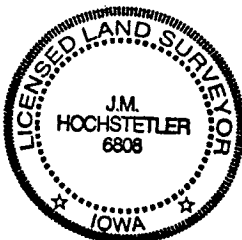
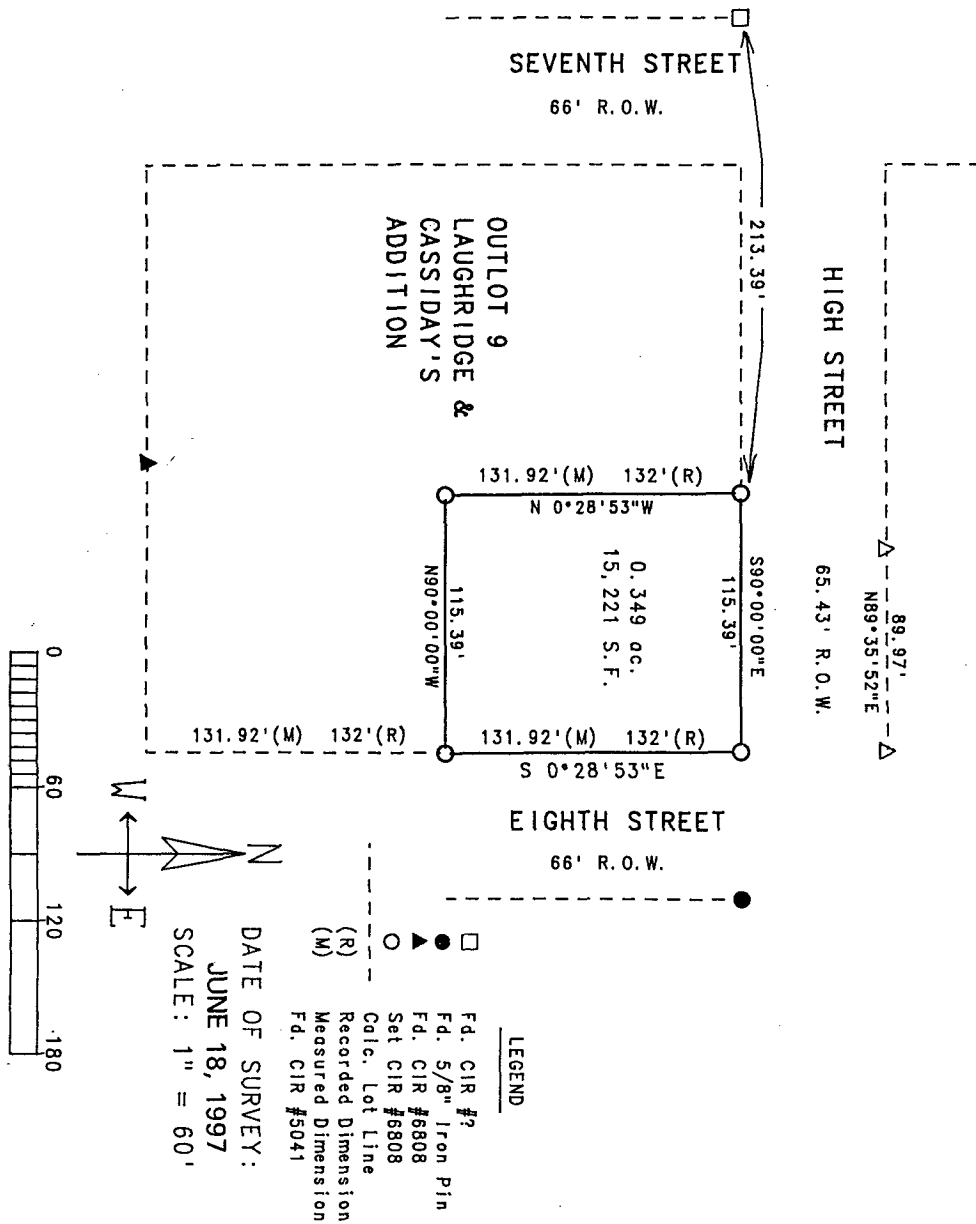
FILED NO. 3594
BOOK 2 PAGE 318
97 JUN 18 PM 2:29
MICHELLE UTSLER
RECORDER
MADISON COUNTY, IOWA

VANCE & HOCHSTETLER, P.C. CONSULTING ENGINEERS, WINTERSSET, IOWA (515)462-3995

CHARLES T. VANCE, 110 WEST GREEN ST., WINTERSSET, IOWA 50273
JAMES M. HOCHSTETLER, 110 WEST GREEN ST., WINTERSSET, IOWA 50273

*Re-Filed
See 2-322
7-2-97*

A PLAT OF SURVEY FOR JERRY MITCHELL OF THE EAST 115.39 FEET OF THE NORTH HALF OF OUTLOT 9 OF LAUGHRIDGE & CASSIDAY'S ADDITION TO THE CITY OF WINTERSSET, MADISON COUNTY, IOWA.



I hereby certify that this land surveying document was prepared and the related survey work was performed by me or under my direct personal supervision and that I am a duly licensed Land Surveyor under the laws of the State of Iowa.
J.M. Hochstetler
J.M. HOCHSTETLER
License number 6808
Date 6/18/97
My license renewal date is December 31, 1997.
Pages or sheets covered by this seal: 1