

COMPUTER   
RECORDED   
COMPARED

FILED NO: **2912**

BOOK 2 PAGE 315

97 APR 23 PM 4: 12

MICHELLE UTSLER  
RECORDER  
MADISON COUNTY, IOWA

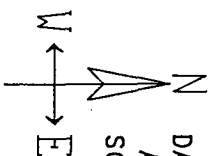
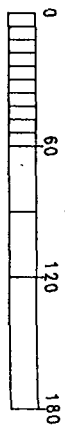
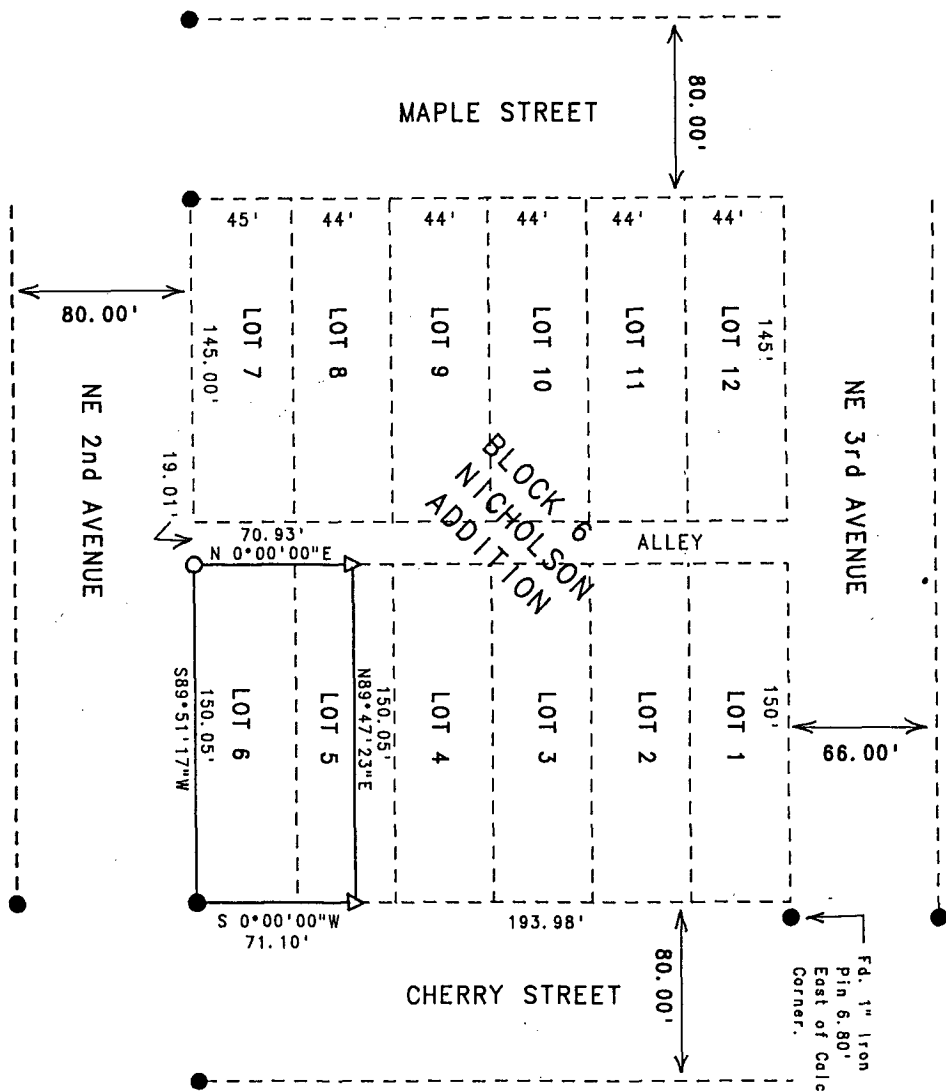
REC 5 02  
PLANS 100  
SCALE 1/2"

**VANCE & HOCHSTETLER, P.C. CONSULTING ENGINEERS, WINTERSET, IOWA (515)462-3995**

**CHARLES T. VANCE, 110 WEST GREEN ST., WINTERSET, IOWA 50273**

**JAMES M. HOCHSTETLER, 110 WEST GREEN ST., WINTERSET, IOWA 50273**

A PLAT OF SURVEY FOR BEVERLY REINERT OF LOT 6 AND THE SOUTH 26 FEET OF LOT 5 IN BLOCK 6 OF THE NICHOLSON ADDITION TO THE CITY OF EARLHAM, MADISON COUNTY, IOWA.



DATE OF SURVEY:  
April 8, 1997  
SCALE: 1" = 60'

LEGEND

- Fd. 1" Iron Pin
- △ Fd. 1/2" Iron Pin
- Set PK Nail
- - - Calc. Lot Line



I hereby certify that this land surveying document was prepared and the related survey work was performed by me or under my direct personal supervision and that I am a duly licensed Land Surveyor under the laws of the State of Iowa.

*James M. Hochstetler*  
**J.M. HOCHSTETLER**  
 License number 6808  
 Date 4/11/97  
 My license renewal date is December 31, 1997  
 Pages or sheets covered by this seal: 1