

REC \$ 5.00

AUG \$

R.M.F. \$ 1.00

COMPUTER ✓

RECORDED ✓

COMPARED ✓

FILED NO. 569

BOOK 2 PAGE 291

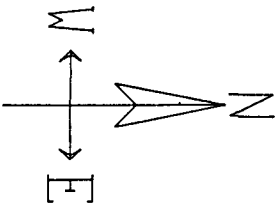
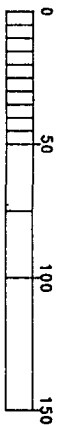
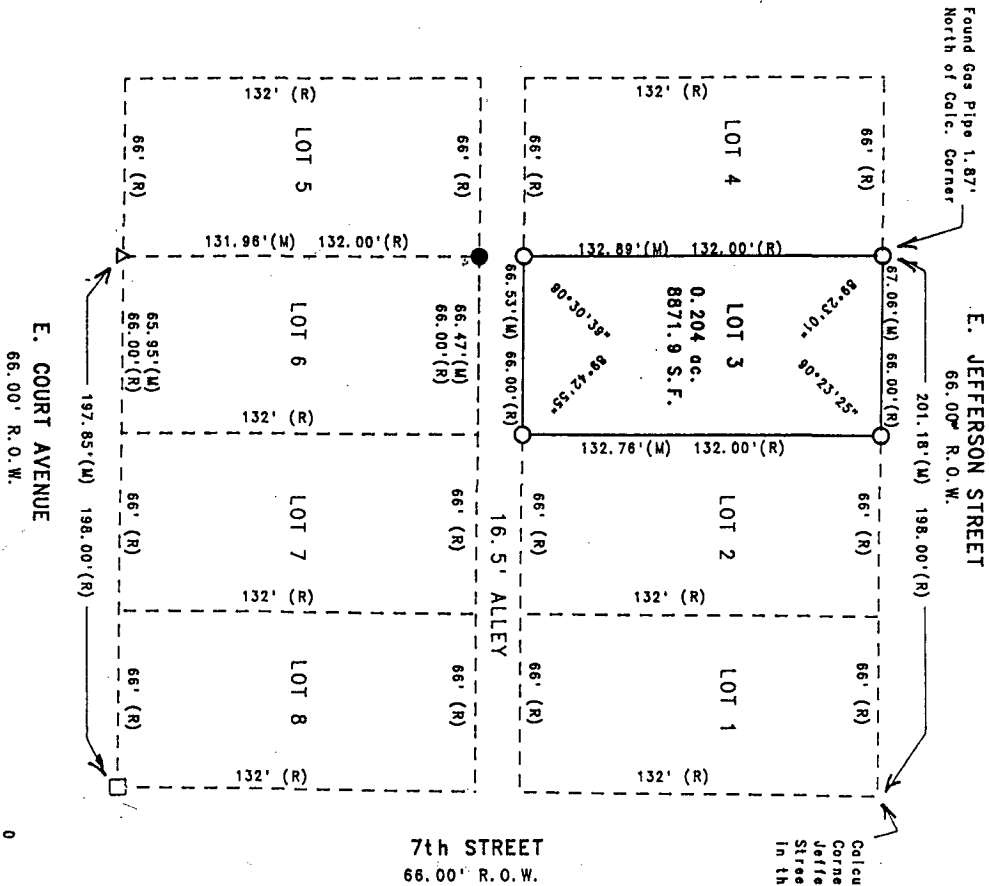
96 AUG 27 PM 4:09

MICHELLE UTSLER
RECORDER
MADISON COUNTY, IOWA

VANCE & HOCHSTETLER, P.C. CONSULTING ENGINEERS, WINTERSSET, IOWA (515)462-3995

CHARLES T. VANCE, 110 WEST GREEN ST., WINTERSSET, IOWA 50273
JAMES M. HOCHSTETLER, 110 WEST GREEN ST., WINTERSSET, IOWA 50273

A PLAT OF SURVEY FOR GARY SMITH OF LOT 3, BLOCK 3 OF THE
LAUGHRIDGE & CASSIDAY'S ADDITION TO THE CITY OF WINTERSSET,
MADISON COUNTY, IOWA.



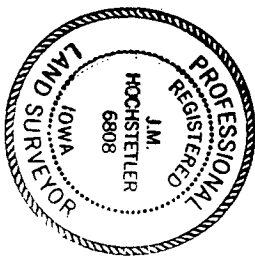
DATE OF SURVEY:
August 21, 1996
SCALE: 1" = 50'

- Calculated Block Corner (assuming Jefferson & 7th Streets are centered in their R.O.W.)
- Fd. CIR #5041
 - Fd. 60d Nail
 - Fd. 5/8" Iron Pin
 - Set CIR #6808
 - Calculated Lot Line
 - - - Recorded Dimension
 - Measured Dimension
- LEGEND

I hereby certify that this land surveying document was prepared by me or under my direct supervision and that I am a duly Registered Land Surveyor under the laws of the State of Iowa.

Signature: *J.M. Hochstetler*
J.M. Hochstetler
Date: 8/22/96 Reg. No. 6808
(Month, day, year)

My registration renewal date is December 31, 1997



TOWN PLAT 2