

COMPUTER
RECORDED
COMPARED

2057

FILED NO. _____

BOOK 2 PAGE 266

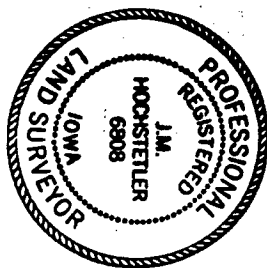
96 JAN 30 PH 2:11

MICHELLE UTSLER
RECORDER
MADISON COUNTY, IOWA

VANCE & HOCHSTETLER, P.C. CONSULTING ENGINEERS, WINTERSSET, IOWA (515)462-3995

CHARLES T. VANCE, 71 JEFFERSON ST., WINTERSSET, IOWA 50273

JAMES M. HOCHSTETLER, 71 JEFFERSON ST., WINTERSSET, IOWA 50273



I hereby certify that the data appearing on this document was prepared by me or under my direct supervision and that I am a duly Registered Land Surveyor under the laws of the State of Iowa.

Signature: *J.M. Hochstetler*

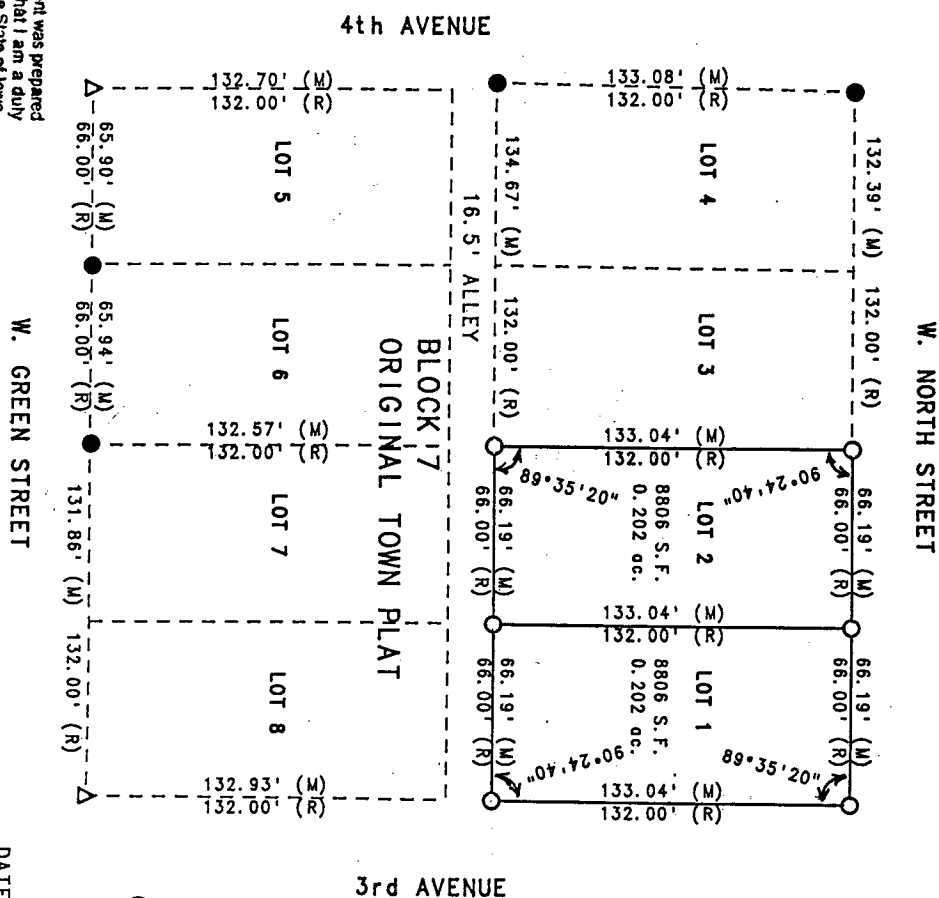
J.M. Hochstetler

Date: 1/18/96 Reg. No. 6908

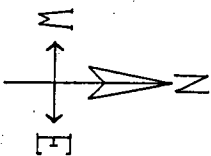
(Month, day, year)

My registration renewed date is December 31, 1997

A PLAT OF SURVEY FOR STEVE SAWYERS OF LOTS 1 & 2 OF BLOCK 7 OF THE ORIGINAL TOWN OF WINTERSSET, MADISON COUNTY, IOWA.



LEGEND
● Found 1/2" Iron Pin
△ Found Nail
○ Set C.I.R. #6808
(M) Measured Dimension
(R) Recorded Dimension



DATE OF SURVEY: January 18, 1996

SCALE: 1" = 50'