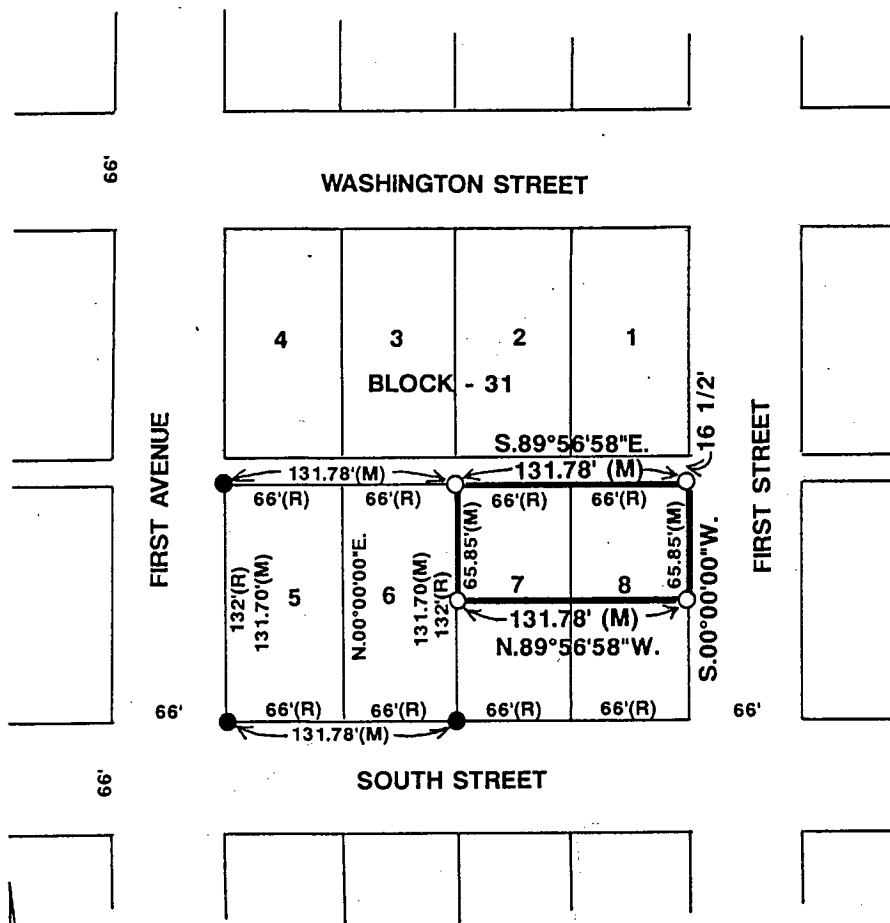
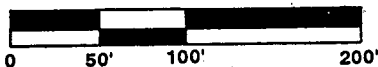


PLAT OF A SURVEY MADE FOR DAN PATTERSON  
OF THE N.1/2 OF LOTS 7 AND 8, BLOCK 31,  
ORIGINAL TOWN TO WINTERSET, MADISON COUNTY, IOWA



- FOUND C.I.R. #6808
- SET C.I.R. #5041
- (R) RECORDED DIMENSION
- (M) MEASURED DIMENSION

SCALE: 1" = 100'



DATE OF SURVEY:  
DEC. 21, 1994

REC \$ 500  
AUD \$ \_\_\_\_\_  
R.M.F. \$ 100

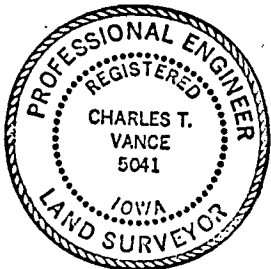
FILED NO. 1910

BOOK 2 PAGE 242

95 JAN 26 AM 9:44

COMPUTER   
RECORDED   
COMPARED

MICHELLE UTSLER  
RECORDER  
MADISON COUNTY, IOWA



I HEREBY CERTIFY THAT THIS PLAN, SPECIFICATION, PLAT, MAP, SURVEY OR REPORT WAS MADE BY ME OR UNDER MY DIRECT PERSONAL SUPERVISION AND THAT I AM A DULY REGISTERED PROFESSIONAL ENGINEER AND LAND SURVEYOR UNDER THE LAWS OF THE STATE OF IOWA

SIGNED Charles T. Vance DATE 28 Dec. 1994  
Charles T. Vance, P.E. & L.S. Iowa Reg. No. 5041  
My Registration Expires December 31, 1995

VANCE & HOCHSTETLER, P.C.  
CONSULTING ENGINEERS  
71 JEFFERSON  
WINTERSET, IOWA 50273