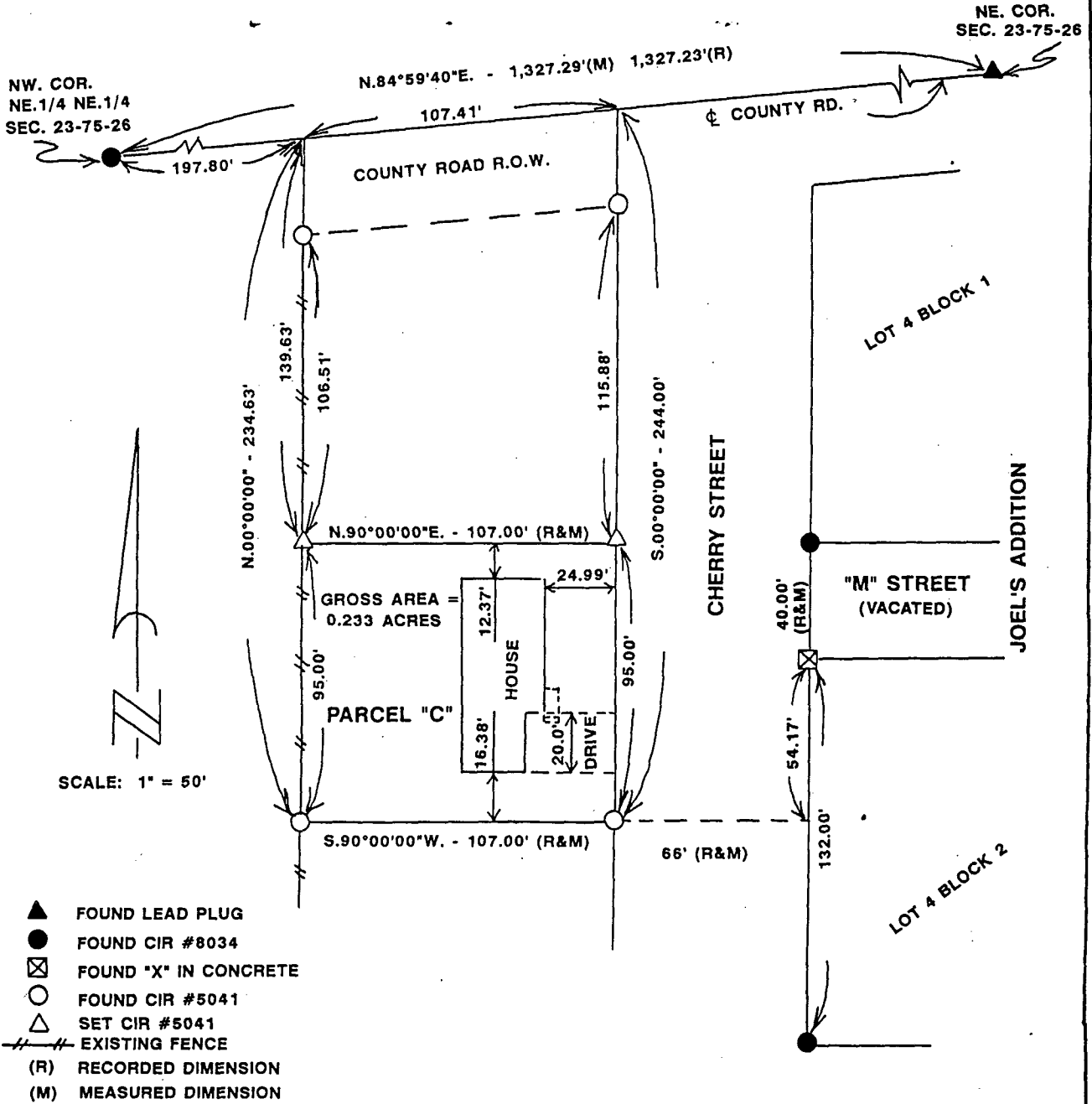


PLAT OF SURVEY FOR DENNIS MORGAN IN THE NE.1/4
 OF THE NE.1/4 OF SECTION 23, T75N, R26W OF THE 5TH P.M.,
 CITY OF ST. CHARLES, MADISON COUNTY, IOWA



DESCRIPTION:

Parcel "C" in the Northeast Quarter of the Northeast Quarter of Section 23, Township 75 North, Range 26 West of the 5th Principal Meridian, City of St. Charles, Madison County, Iowa, more particularly described as follows:

Commencing at the Northwest Corner of the NE.1/4 of the NE.1/4 of Section 23, T75N, R26W of the 5th P.M., City of St. Charles, Madison County, Iowa; thence, along the North line of said NE.1/4 of the NE.1/4, North 84°59'40" East, 197.80 feet; thence South 00°00'00", 139.63 feet to the point of beginning. Thence North 90°00'00" East, 107.00 feet to the West line of Cherry Street; thence, along said West line, South 00°00'00", 95.00 feet; thence South 90°00'00" West, 107.00 feet; thence North 00°00'00", 95.00 feet to the point of beginning. Said Parcel "C" contains 0.233 Acres.

COMPUTER
 RECORDED
 OBSERVED

FILED NO. **1858**

BOOK 2 PAGE 241

95 JAN 18 PM 2:25

MICHELLE UTSLER
 RECORDER
 MADISON COUNTY, IOWA



I HEREBY CERTIFY THAT THIS PLAN, SPECIFICATION, PLAT, MAP, SURVEY OR REPORT WAS MADE BY ME OR UNDER MY DIRECT PERSONAL SUPERVISION AND THAT I AM A DULY REGISTERED PROFESSIONAL ENGINEER AND LAND SURVEYOR UNDER THE LAWS OF THE STATE OF IOWA

SIGNED *Charles T. Vance* DATE 10 Jan. 1995
 Charles T. Vance, P.E. & L.S. Iowa Reg. No. 5041
 My Registration Expires December 31, 1995

VANCE & HOCHSTETLER, P.C.
 CONSULTING ENGINEERS
 71 JEFFERSON
 WINTERSET, IOWA 50273