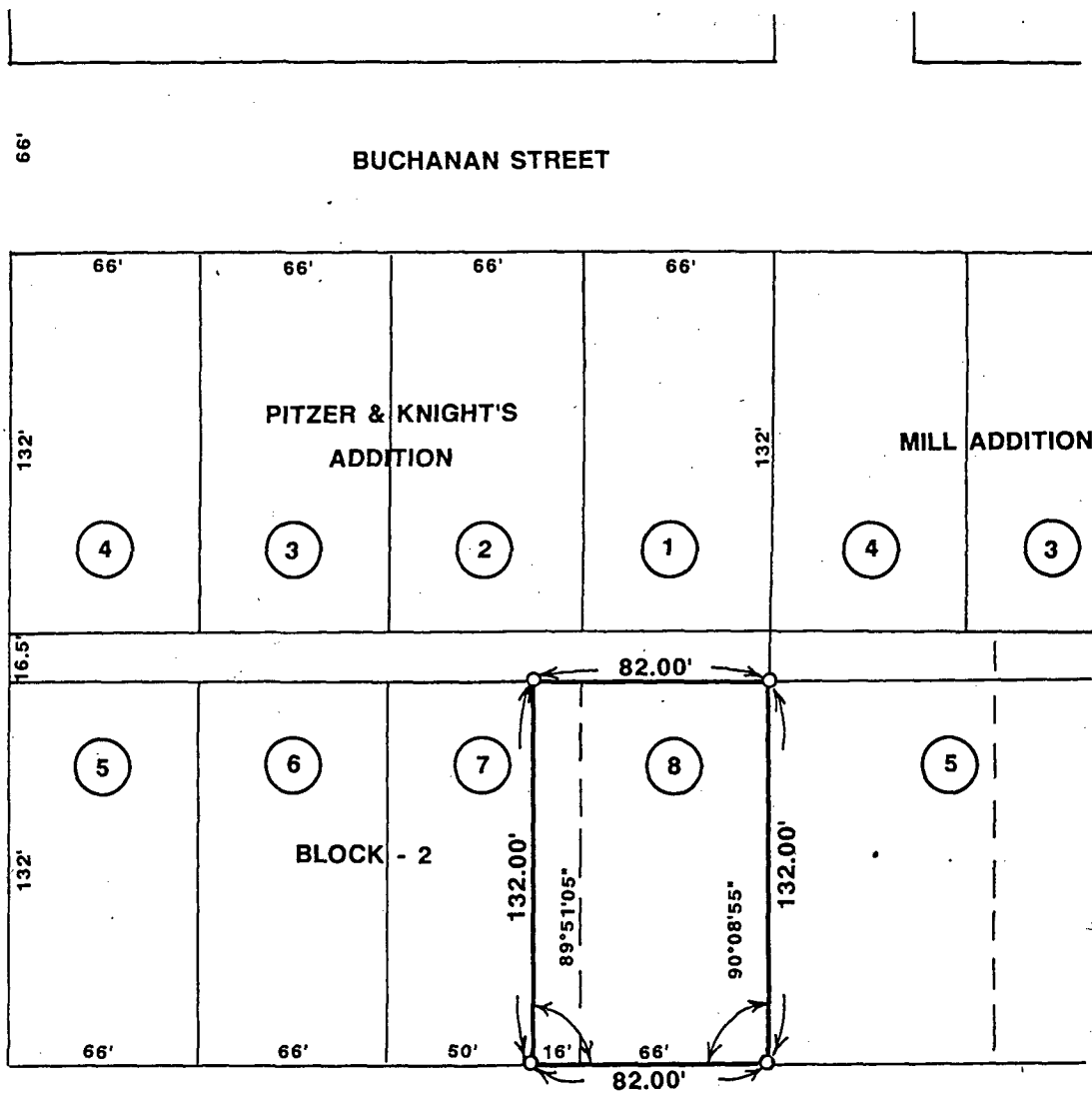


PLAT OF SURVEY MADE FOR JERRY TREVILLYAN
 OF LOT 8 AND THE EAST 16.0 FEET OF LOT 7,
 BLOCK 2 OF PITZER & KNIGHT'S ADDITION
 TO THE CITY OF WINTERSET, MADISON COUNTY, IOWA.



SECOND STREET

BUCHANAN STREET

PITZER & KNIGHT'S
 ADDITION

MILL ADDITION

BLOCK - 2

FILMORE STREET

SCALE: 1" = 60'



DATE OF SURVEY:
 OCTOBER 21, 1994

○ SET C.I.R. #5041

COMPUTER
 RECORDED
 COMPARED

FILED NO. 1518
 BOOK 2 PAGE 235

94 DEC -6 PM 2:07

REC \$ 5.00
 AUD \$ _____
 R.M.F. \$ 1.00

MICHELLE UTSLER
 RECORDER
 MADISON COUNTY, IOWA



I HEREBY CERTIFY THAT THIS PLAN, SPECIFICATION, PLAT, MAP, SURVEY OR REPORT WAS MADE BY ME OR UNDER MY DIRECT PERSONAL SUPERVISION AND THAT I AM A DULY REGISTERED PROFESSIONAL ENGINEER AND LAND SURVEYOR UNDER THE LAWS OF THE STATE OF IOWA.
 SIGNED Charles T. Vance DATE 5 Dec, 1994
 Charles T. Vance, P.E. & L.S. Iowa Reg. No. 5041
 My Registration Expires December 31, 1995

VANCE & HOCHSTETLER, P.C.
 CONSULTING ENGINEERS
 71 JEFFERSON
 WINTERSET, IOWA 50273