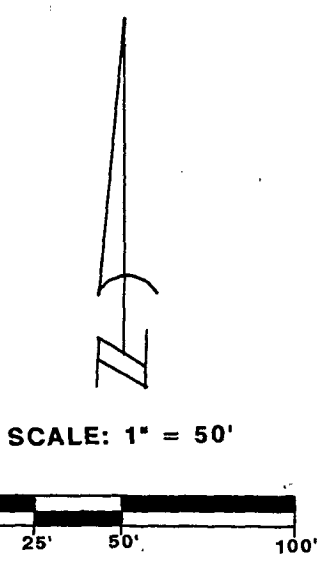
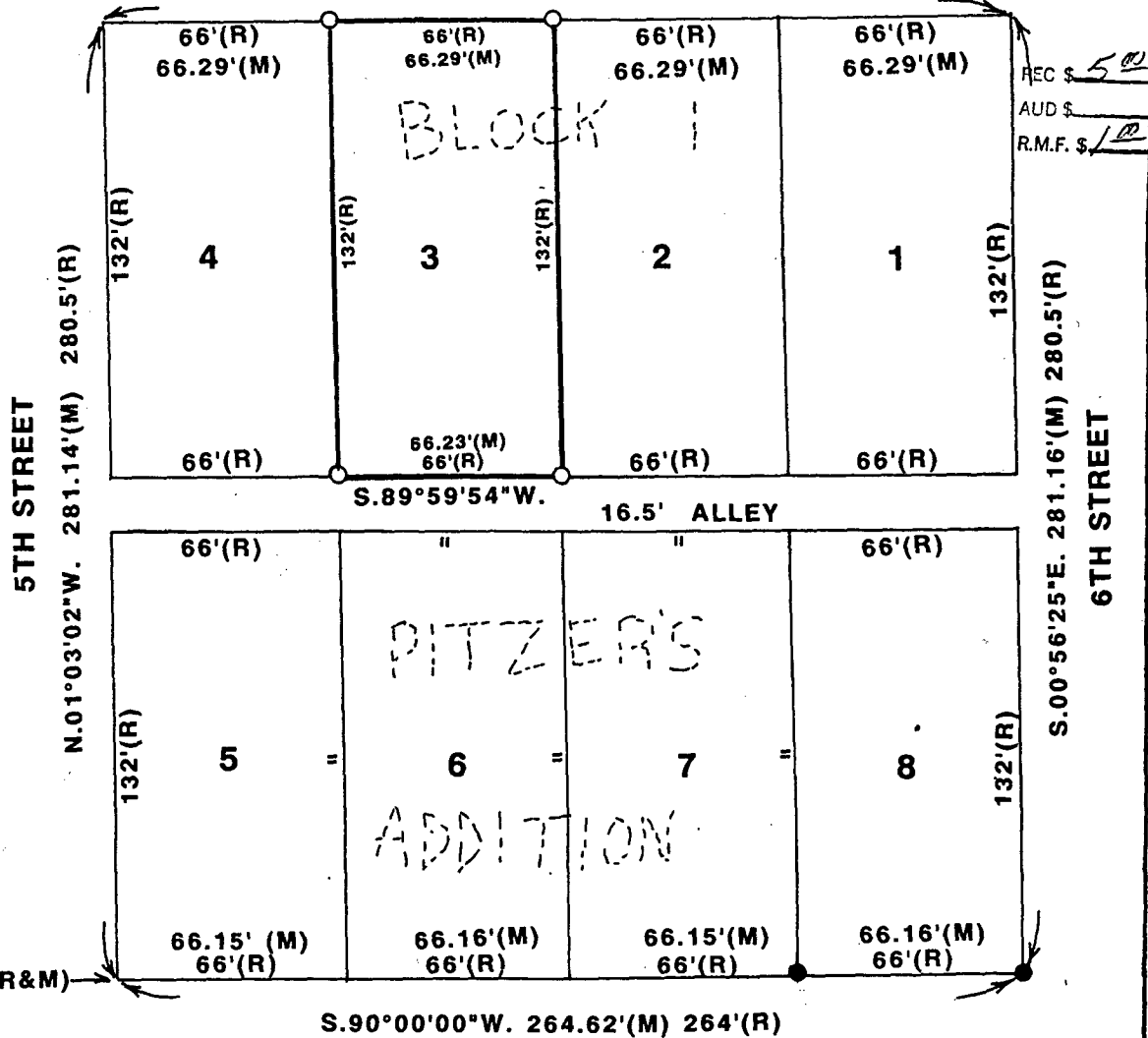


PLAT OF SURVEY FOR DENNIS LITTLE
 OF LOT 3, BLOCK 1, PITZER'S
 ADDITION TO THE CITY OF
 WINTERSET, MADISON COUNTY, IOWA.

FILED NO. 664
 BOOK 2 PAGE 223
 94 SEP -1 PM 2: 20

BUCHANAN STREET
 N.89°59'43"E. 265.16'(M) 264'(R)

MICHELLE UTSLER
 RECORDER
 MADISON COUNTY, IOWA



I HEREBY CERTIFY THAT THIS PLAN, SPECIFICATION, PLAT, MAP, SURVEY, OR REPORT WAS PREPARED BY ME OR UNDER MY DIRECT PERSONAL SUPERVISION AND THAT I AM A DULY REGISTERED PROFESSIONAL ENGINEER AND LAND SURVEYOR UNDER THE LAWS OF THE STATE OF IOWA. MY REGISTRATION EXPIRES Dec. 31, 1995
 SIGNED J.M. Hochstetler DATE 8/24/94
 J.M. HOCHSTETLER IOWA REG. NO. 6808

- ▲ FOUND 60D NAIL
- FOUND 5/8" IRON ROD
- SET C.I.R. #6808
- (R) RECORDED DIMENSION
- (M) MEASURED DIMENSION

DATE OF SURVEY:
 AUG. 9, 1994

VANCE & HOCHSTETLER, P.C.
 CONSULTING ENGINEERS
 71 JEFFERSON
 WINTERSET, IOWA 50273