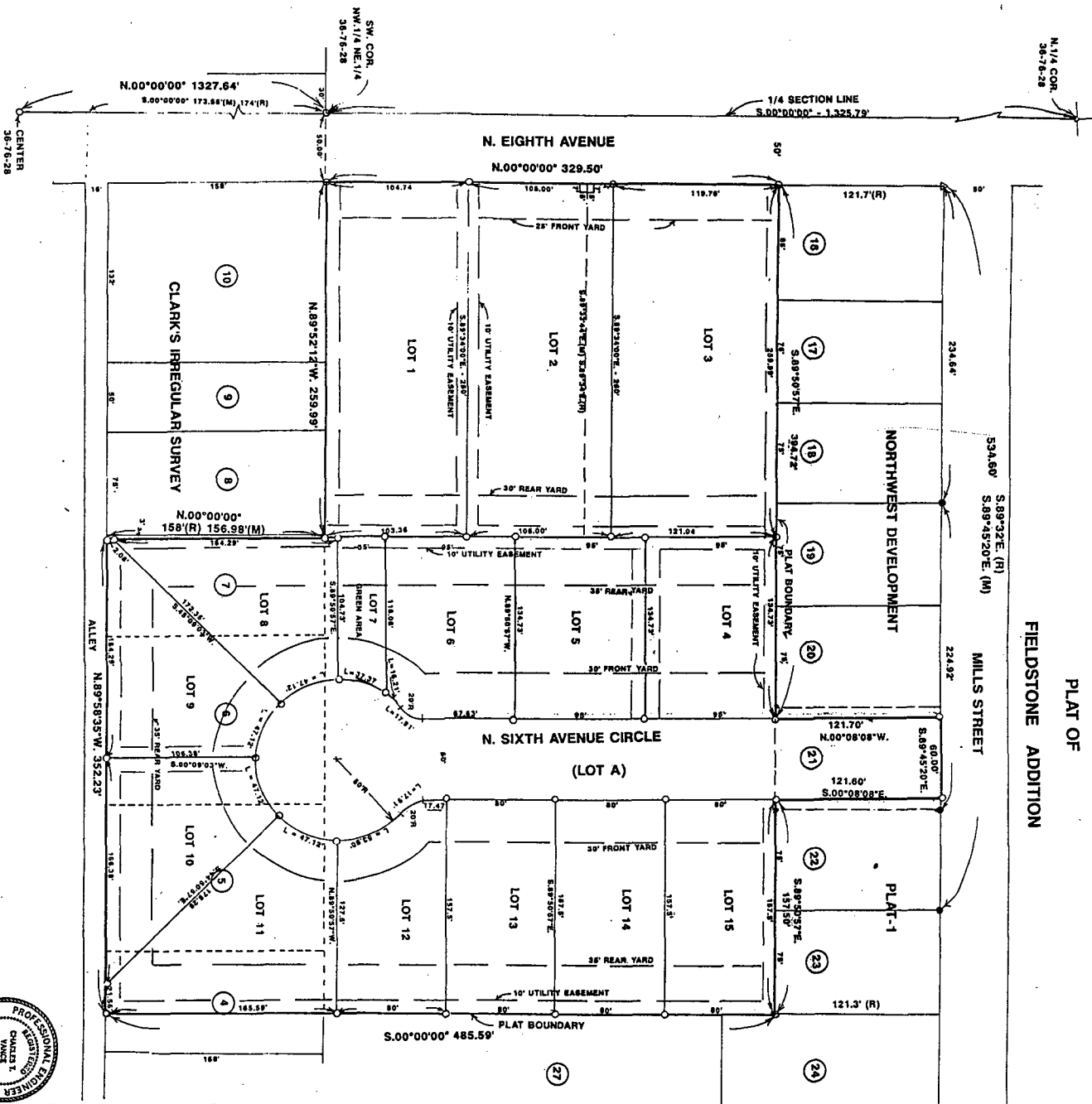
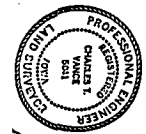


# Amended Plat Lot 12 01/15/08, 2008-155

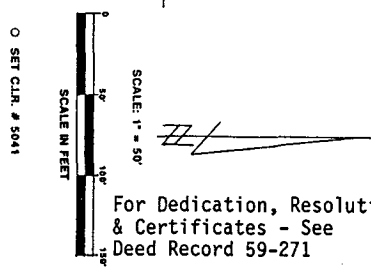


PLAT OF  
FIELDSTONE ADDITION



**VANCE & HOCHSTETLER, P.C.**  
CONSULTING ENGINEERS  
71 JEFFERSON STREET  
WINNERSSET, IOWA 50273

**DESCRIPTION:**  
Lot 5 of the Irregular Survey of the NW 1/4 of the NE 1/4 of Section 36, T78N, R28W of the 5th P.M., Madison County, Iowa; AND part of Lot 21, Northwest Corner of the City of Winterset, Madison County, Iowa; AND the West 48 feet of Lot 4, Lot 5, Lot 6 and the East 72 feet of Lot 7 (all as shown on the Irregular Survey in the City of Winterset, Madison County, Iowa, more particularly described as follows: Commencing at the Southwest Corner of the NW 1/4 of the NE 1/4 of Section 36, T78N, R28W of the 5th P.M.; City of Winterset, Madison County, Iowa; thence S. 89° 45' 20" E. 137.50 feet to the point of beginning; thence North 00° 00' 00" to 329 feet along the East line of N. 8th Avenue; thence South 89° 50' 57" East, 394.72 feet; thence North 00° 08' 08" West, 121.70 feet; thence South 89° 45' 20" East, 80.00 feet along the South line of Hill's Street; thence South 00° 08' 08" East, 121.60 feet; thence South 89° 50' 57" East, 157.50 feet; thence North 00° 08' 08" West, 121.70 feet; thence North 89° 58' 35" West, 352.23 feet; thence North 156° 58' 35" West, 352.23 feet; thence North 89° 52' 12" West, 358.98 feet to the point of beginning, and containing 6.06 acres.



FILED NO. 3216-1  
BOOK 2 PAGE 208  
94 MAY 20 AM 10:56  
MICHELLE UTSLER  
RECORDER  
MADISON COUNTY, IOWA

FINAL PLAT
FIELDSTONE ADDITION
PATRICK F. COCKREAN 719 N. 8TH AVENUE WINNERSSET, IOWA 50273
VANCE & HOCHSTETLER, P.C. CONSULTING ENGINEERS 71 JEFFERSON STREET WINNERSSET, IOWA 50273