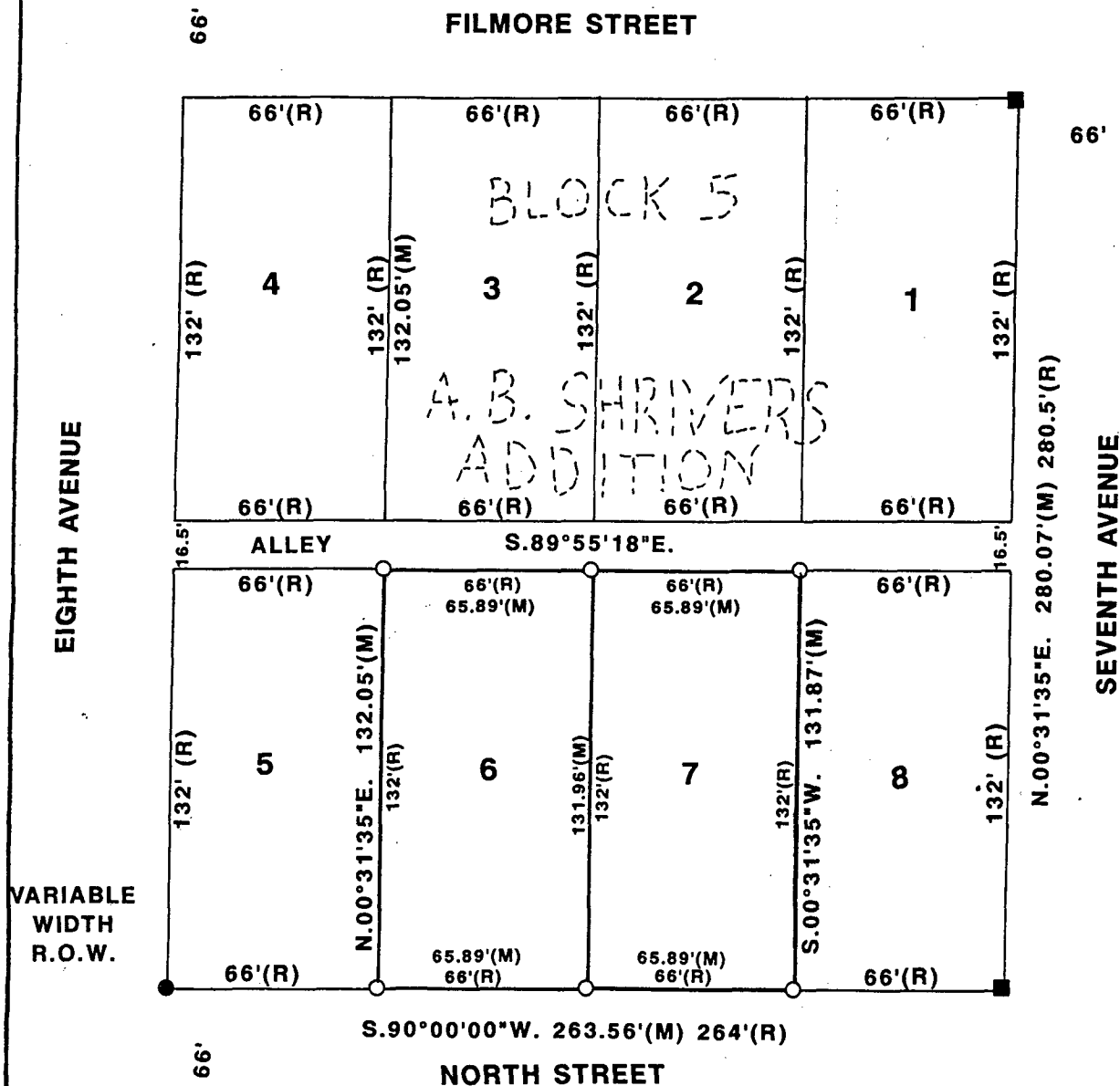


PLAT OF SURVEY FOR MARK GROSSMAN
 OF LOTS 6&7, BLOCK 5, A.B. SHRIVER'S
 ADDITION, CITY OF WINTERSET,
 MADISON COUNTY, IOWA.



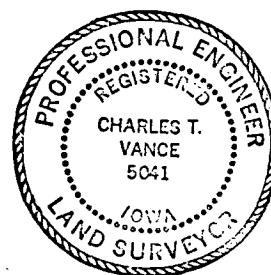
REC \$ 500
 AUD \$ _____
 R.M.F. \$ 100

FILED NO. 325
 BOOK 2 PAGE 217

94 AUG - 2 PM 1:57

COMPUTER
 RECORDED
 COMPARED

MICHELLE UTSLER
 RECORDER
 MADISON COUNTY, IOWA

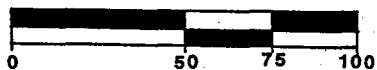


- FOUND SPIKE
- FOUND 5/8" IRON ROD
- SET C.I.R. #5041
- (R) RECORDED DIMENSION
- (M) MEASURED DIMENSION

I HEREBY CERTIFY THAT THIS PLAN, SPECIFICATION, PLAT, MAP, SURVEY OR REPORT WAS MADE BY ME OR UNDER MY DIRECT PERSONAL SUPERVISION AND THAT I AM A DULY REGISTERED PROFESSIONAL ENGINEER AND LAND SURVEYOR UNDER THE LAWS OF THE STATE OF IOWA

SIGNED Charles T. Vance DATE 29 July 1994
 Charles T. Vance, P.E. & L.S. Iowa Reg. No. 5041
 My Registration Expires December 31, 1995

SCALE: 1" = 50'



DATE OF SURVEY:
 AUGUST 21, 1993

VANCE & HOCHSTETLER, P.C.
 CONSULTING ENGINEERS
 71 JEFFERSON
 WINTERSET, IOWA 50273