

PLAT OF SURVEY FOR BUMBARGER ESTATE OF LOTS 3, 4, 5 AND 6 IN BLOCK 3 OF HARTMAN & YOUNG'S ADDITION TO THE TOWN OF ST. CHARLES, MADISON COUNTY, IOWA.

FILED NO. **1562**

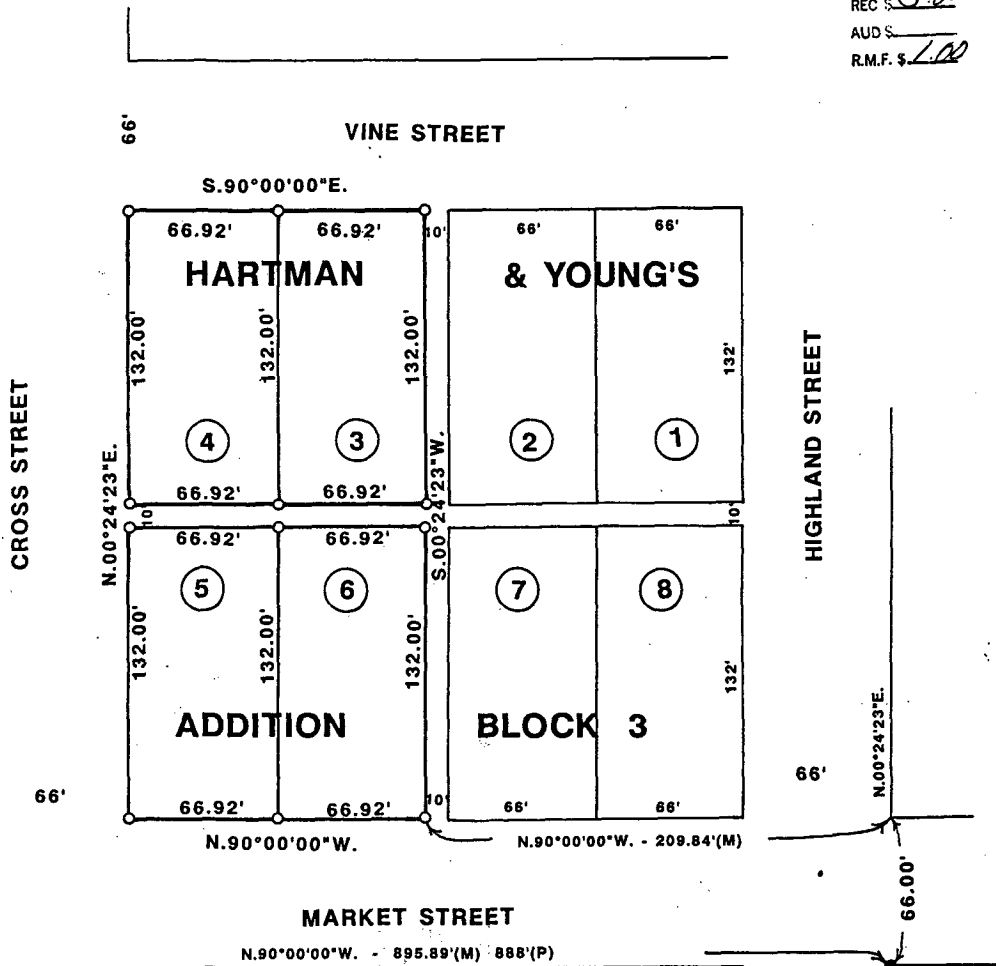
BOOK **2** PAGE **196**

93 DEC 16 PH 4:06

COMPUTER ✓
RECORDED ✓
COMPARED ✓

MICHELLE UTSLER
RECORDER
MADISON COUNTY, IOWA

REC \$ 5.00
AUD \$ _____
R.M.F. \$ 1.00

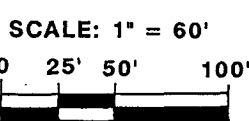


NE. COR.
LOT 3, BLK. 8

NW. COR.
LOT 4, BLK. 1

- FOUND 1/2" IRON ROD
- SET C.I.R. # 5041
- (M) MEASURED DIMENSION
- (P) PLATTED DIMENSION

DATE OF SURVEY:
NOVEMBER 2, 1993



I HEREBY CERTIFY THAT THIS PLAN, SPECIFICATION, PLAT, MAP, SURVEY OR REPORT WAS MADE BY ME OR UNDER MY DIRECT PERSONAL SUPERVISION AND THAT I AM A DULY REGISTERED PROFESSIONAL ENGINEER AND LAND SURVEYOR UNDER THE LAWS OF THE STATE OF IOWA

SIGNED *Charles T. Vance* DATE *7 Dec. 1993*
Charles T. Vance, P.E. & L.S. Iowa Reg. No. 5041
My Registration Expires December 31, 19*93*

VANCE & HOCHSTETLER, P.C.
CONSULTING ENGINEERS
71 JEFFERSON STREET
WINTERSET, IOWA 50273