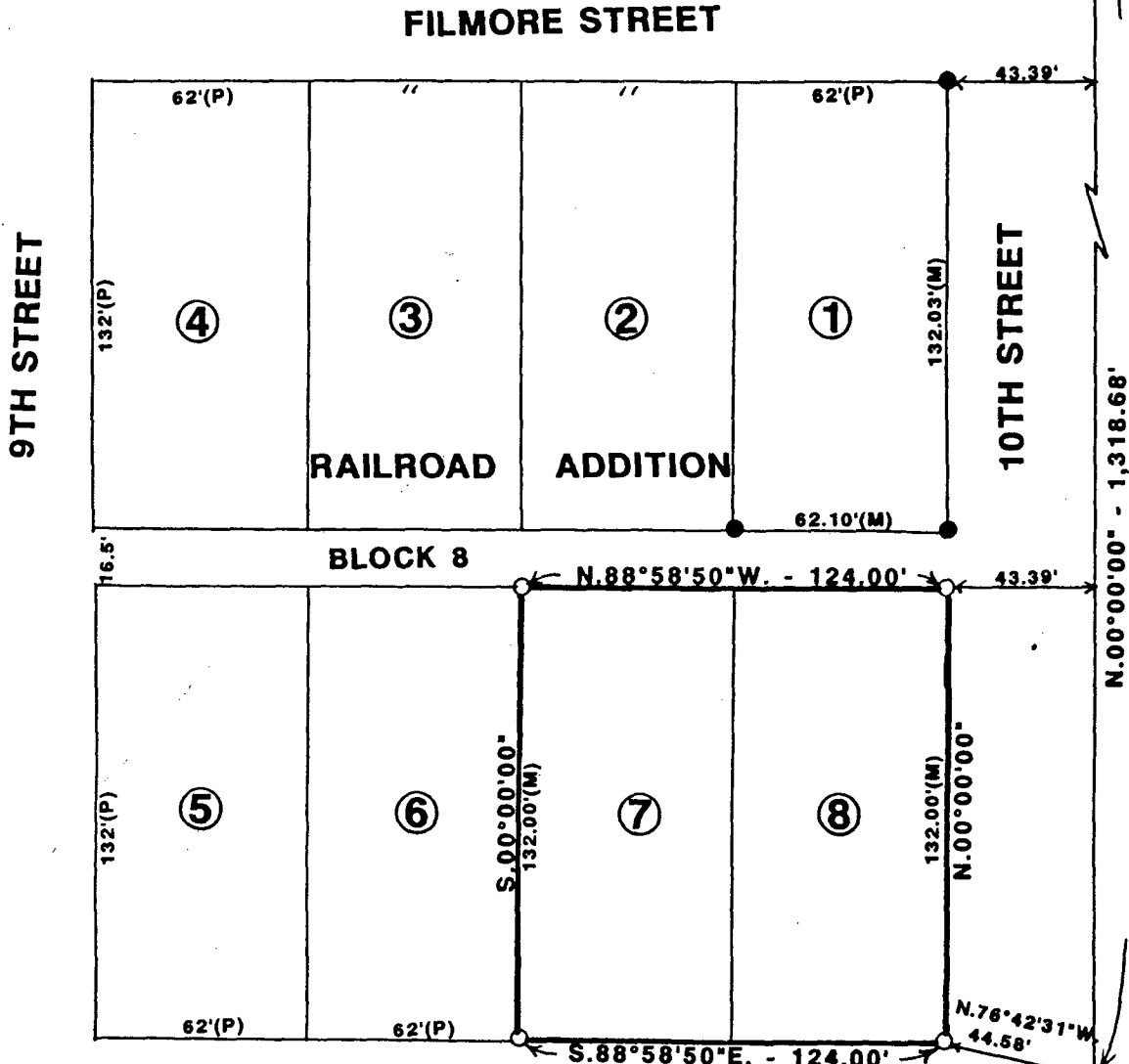
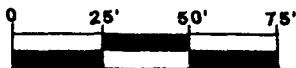


PLAT OF SURVEY FOR RICK THORNBURG OF LOTS 7 AND 8, BLOCK 8, RAILROAD ADDITION TO THE CITY OF WINTERSSET, MADISON COUNTY, IOWA.

NE. COR.
SE. - NW.
31-76-27



SCALE: 1" = 50'



DATE OF SURVEY:
SEPTEMBER 21, 1992

- △ FOUND "X" IN PAVING
- FOUND C.I.R. #5041
- SET C.I.R. #5041
- (M) MEASURED DIMENSION
- (P) PLATTED DIMENSION

REC \$ 15.00
AUD \$ _____
R.M.F. \$ 1.00

COMPUTER ✓
RECORDED ✓
COMPARED ✓

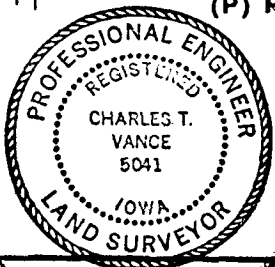
CENTER
31-76-27

FILED NO. 1560

BOOK 2 PAGE 194

93 DEC 16 PM 4: 03

MICHELLE UTSLER
RECORDER
MADISON COUNTY, IOWA



I HEREBY CERTIFY THAT THIS PLAN, SPECIFICATION, PLAT, MAP, SURVEY OR REPORT WAS MADE BY ME OR UNDER MY DIRECT PERSONAL SUPERVISION AND THAT I AM A DULY REGISTERED PROFESSIONAL ENGINEER AND LAND SURVEYOR UNDER THE LAWS OF THE STATE OF IOWA

SIGNED Charles T. Vance DATE 13 Dec. 1993
Charles T. Vance, P.E. & L.S. Iowa Reg. No. 5041
My Registration Expires December 31, 1993

VANCE & HOCHSTETLER, P.C.
CONSULTING ENGINEERS
71 JEFFERSON
WINTERSSET, IOWA 50273