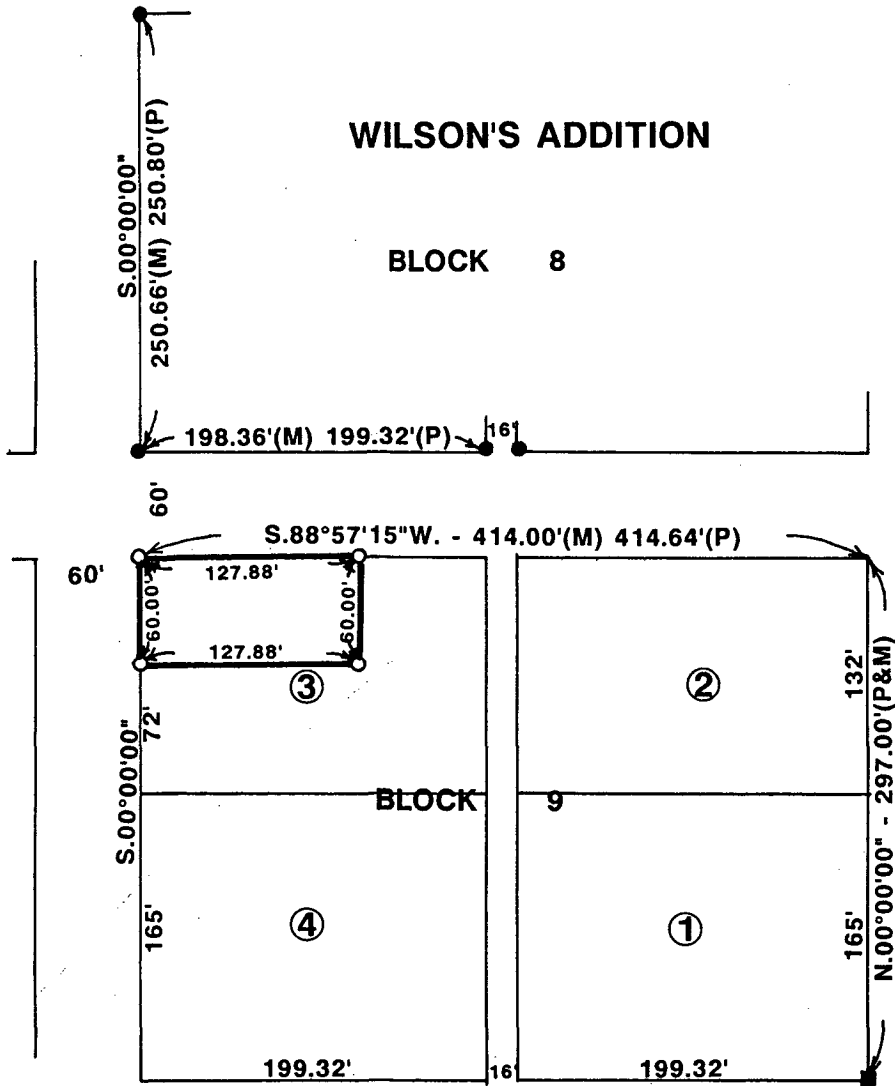


PLAT OF SURVEY FOR HARRY BEVERIDGE IN LOT 3,  
BLOCK 9 OF WILSON'S ADDITION TO THE TOWN OF  
EARLHAM, MADISON COUNTY, IOWA.



- FOUND 1" IRON ROD
- FOUND 1/2" IRON ROD
- SET C.I.R. #5041

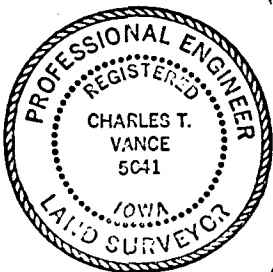
- (M) MEASURED DIMENSIONS
- (P) PLATTED DIMENSIONS

DESCRIPTION:

The North 60 feet of the West Two-Thirds of Lot 3, Block 9 of Wilson's Addition to the Town of Earlham, Madison County, Iowa; EXCEPT, the East 5 feet thereof.

FILED NO. **499**  
BOOK 2 PAGE 183  
93 AUG 26 AM 8:35

COMPUTER  MICHELLE UTSLER  
RECORDED  RECORDER  
COMPARED  MADISON COUNTY, IOWA  
REC \$ 6.00  
AUD \$ \_\_\_\_\_



I HEREBY CERTIFY THAT THIS PLAN, SPECIFICATION, PLAT, MAP, SURVEY OR REPORT WAS MADE BY ME OR UNDER MY DIRECT PERSONAL SUPERVISION AND THAT I AM A DULY REGISTERED PROFESSIONAL ENGINEER AND LAND SURVEYOR UNDER THE LAWS OF THE STATE OF IOWA.  
SIGNED *Charles T. Vance* DATE 16 Aug. 1993  
Charles T. Vance, P.E. & L.S. Iowa Reg. No. 5041  
My Registration Expires December 31, 1993

VANCE & HOCHSTETLER, P.C.  
CONSULTING ENGINEERS  
71 JEFFERSON  
WINTERSET, IOWA 50273