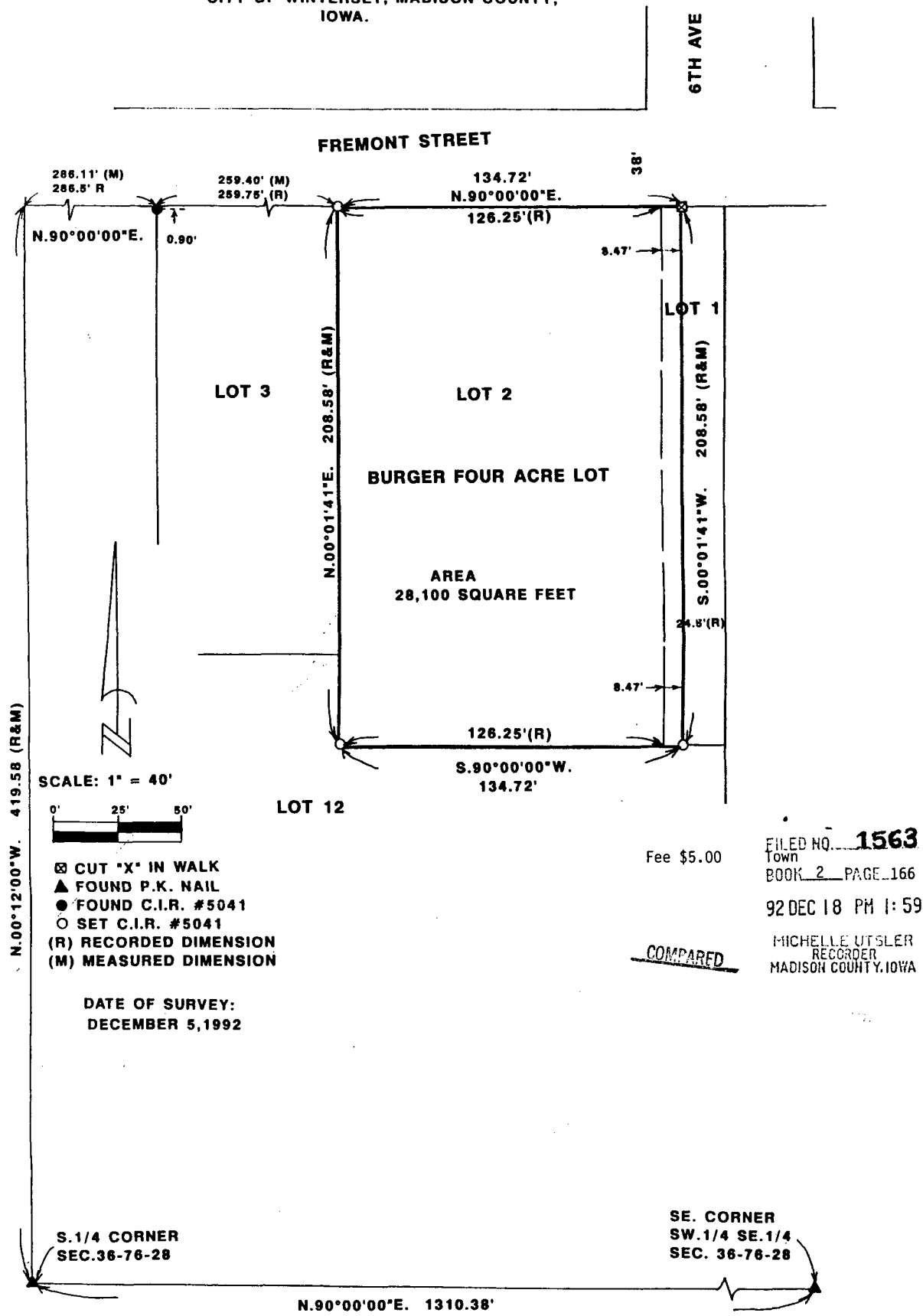


PLAT OF SURVEY FOR IOWA REALTY OF LOT 2 AND THE WEST 8.47 FEET OF LOT 1, BURGER'S FOUR ACRE LOT, CITY OF WINTERSET, MADISON COUNTY, IOWA.



Fee \$5.00

FILED NO. **1563**  
Town  
BOOK 2 PAGE 166  
92 DEC 18 PM 1:59  
MICHELLE UTSLER  
RECORDER  
MADISON COUNTY, IOWA

COMPARED



I HEREBY CERTIFY THAT THIS PLAN, SPECIFICALLY THE SURVEY HEREIN, WAS MADE BY ME OR UNDER MY DIRECT PERSONAL SUPERVISION AND I AM A DULY REGISTERED PROFESSIONAL ENGINEER AND LAND SURVEYOR UNDER THE LAWS OF THE STATE OF IOWA.

SIGNED: *Charles T. Vance* DATE: *16 Dec. 1992*  
Charles T. Vance, P.E. & L.S. Iowa Reg. No. 5041

**VANCE & HOCHSTETLER, P.C.**  
**CONSULTING ENGINEERS**  
71 JEFFERSON  
WINTERSET, IOWA 50273