

PLAT OF SURVEY FOR TAMMIE KENOYER OF LOT 3,  
BLOCK 13, LAUGHRIDGE & CASSIDAY'S ADDITION TO THE  
CITY OF WINTERSET, MADISON COUNTY, IOWA.

497

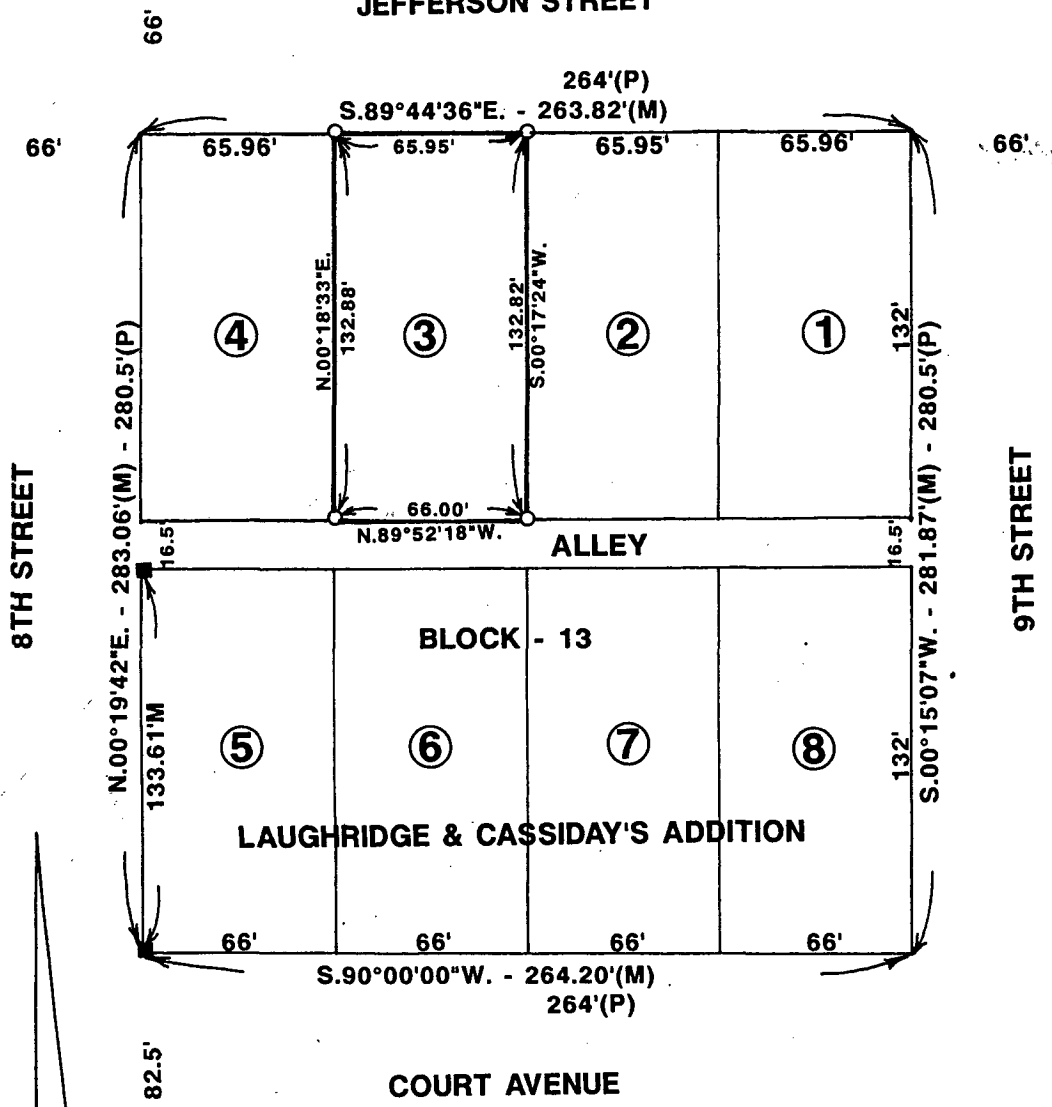
COMPUTER   
RECORDED   
COMPARED

FILED NO. \_\_\_\_\_  
BOOK 2 PAGE 181  
93 AUG 26 AM 8:31

REC \$ 6.00  
AUD \$ \_\_\_\_\_

MICHELLE UTSLER  
RECORDER  
MADISON COUNTY, IOWA

JEFFERSON STREET



8TH STREET

9TH STREET

BLOCK - 13

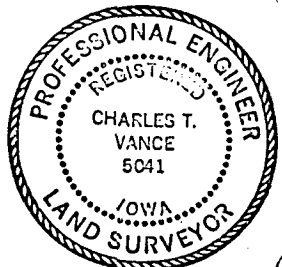
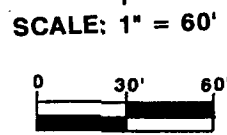
LAUGHRIDGE & CASSIDAY'S ADDITION

COURT AVENUE

- FOUND BOLT SPIKE
- SET C.I.R. #5041

DATE OF SURVEY:  
JULY 22, 1993

(M) MEASURED DIMENSION  
(P) PLATTED DIMENSION



I HEREBY CERTIFY THAT THIS PLAN, SPECIFICATION, PLAT, MAP, SURVEY OR REPORT WAS MADE BY ME OR UNDER MY DIRECT PERSONAL SUPERVISION AND THAT I AM A DULY REGISTERED PROFESSIONAL ENGINEER AND LAND SURVEYOR UNDER THE LAWS OF THE STATE OF IOWA  
SIGNED *Charles T. Vance* DATE *18 August 1993*  
Charles T. Vance, P.E. & L.S. Iowa Reg. No. 5041  
My Registration Expires December 31, 19 93

VANCE & HOCHSTETLER, P.C.  
CONSULTING ENGINEERS  
71 JEFFERSON  
WINTERSET, IOWA 50273