

PLAT OF SURVEY FOR EARLHAM HOME HEALTH CARE  
OF LOT 4, BLOCK 5, RAILROAD ADDITION TO THE CITY OF  
WINTERSET, MADISON COUNTY, IOWA.

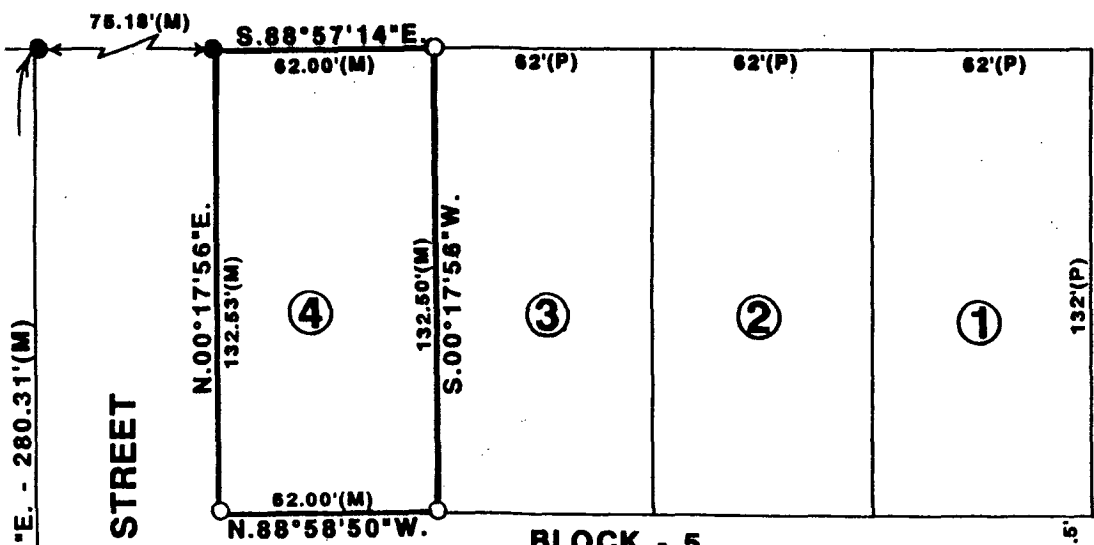
REC \$ 5.00  
AUD \$ -

COMPUTER   
RECORDED   
COMPARED

FILED NO. 3305  
BOOK 2 PAGE 178  
93 JUN 24 PM 3:02

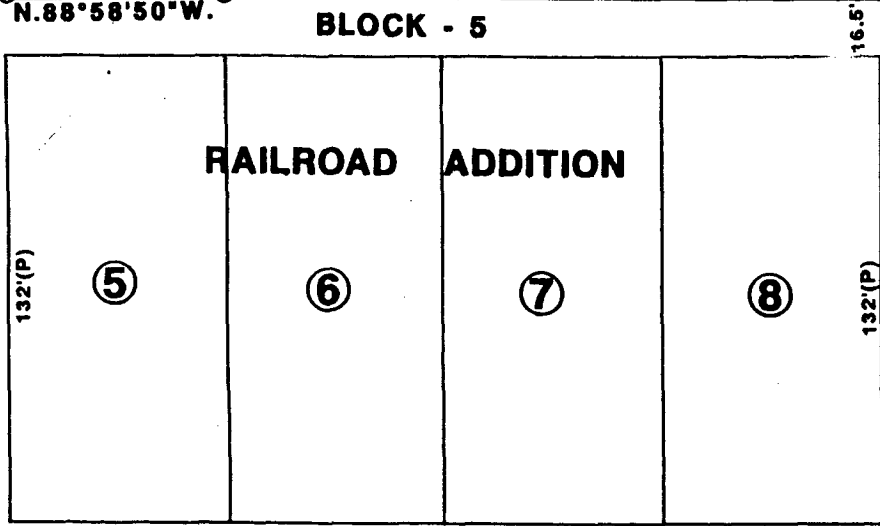
MICHELLE UTSLER  
RECORDER  
MADISON COUNTY, IOWA

FILMORE STREET



6TH STREET  
N.00°17'56"E. - 280.31'(M)

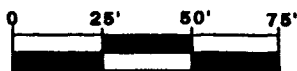
7TH STREET



BLOCK - 5

RAILROAD ADDITION

SCALE: 1" = 50'

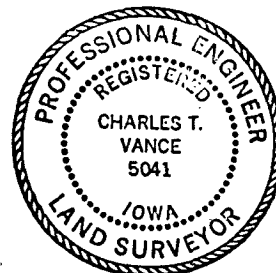


DATE OF SURVEY:  
SEPTEMBER 21, 1992

- FOUND C.I.R. #8034
  - △ FOUND 3/8" IRON ROD
  - SET C.I.R. #5041
- (M) MEASURED DIMENSION  
(P) PLATTED DIMENSION

I HEREBY CERTIFY THAT THIS PLAN, SPECIFICATION, PLAT, MAP, SURVEY OR REPORT WAS MADE BY ME OR UNDER MY DIRECT PERSONAL SUPERVISION AND THAT I AM A DULY REGISTERED PROFESSIONAL ENGINEER AND LAND SURVEYOR UNDER THE LAWS OF THE STATE OF IOWA

SIGNED Charles T. Vance DATE 11 June 1993  
Charles T. Vance, P.E. & L.S. Iowa Reg. No. 5041  
My Registration Expires December 31, 1993



VANCE & HOCHSTETLER, P.C.  
CONSULTING ENGINEERS  
71 JEFFERSON  
WINTERSET, IOWA 50273