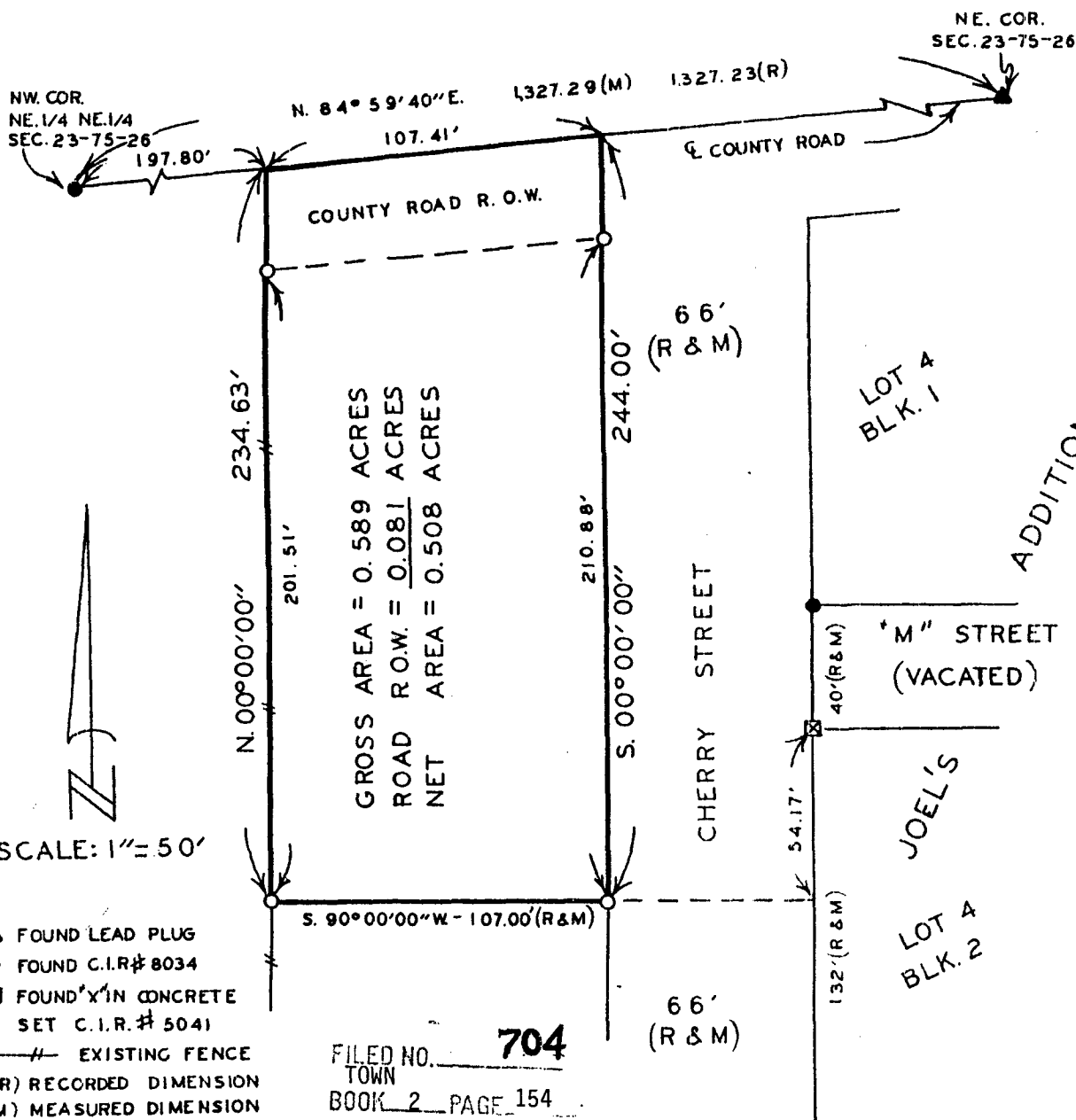


PLAT OF SURVEY FOR BILL YOUNG IN THE NE. 1/4
OF THE NE. 1/4 OF SECTION 23, T75N, R26W OF THE 5TH P.M.,
CITY OF ST. CHARLES, MADISON COUNTY, IOWA.



GROSS AREA = 0.589 ACRES
 ROAD R.O.W. = 0.081 ACRES
 NET AREA = 0.508 ACRES

LOT A
BLK. 1

JOEL'S

LOT A
BLK. 2

ADDITION

SCALE: 1" = 50'

- ▲ FOUND LEAD PLUG
- FOUND C.I.R.#8034
- ☒ FOUND 'X' IN CONCRETE
- SET C.I.R.#5041
- — — EXISTING FENCE
- (R) RECORDED DIMENSION
- (M) MEASURED DIMENSION

FILED NO. **704**
 TOWN
 BOOK 2 PAGE 154

92 SEP 16 PM 3: 16

COMPARED

MICHELLE UTSLER
 RECORDER
 MADISON COUNTY, IOWA Fee \$5.00

DESCRIPTION:

A parcel of land located in the Northeast Quarter of the Northeast Quarter of Section 23, Township 75 North, Range 26 West of the 5th Principal Meridian, City of St. Charles, Madison County, Iowa, more particularly described as follows:
 Commencing at the Northwest Corner of the NE. 1/4 of the NE. 1/4 of Section 23, T75N, R26W of the 5th P.M., City of St. Charles, Madison County, Iowa; thence, along the North line of said NE. 1/4 of the NE. 1/4, North 84°59'40" East 197.80 feet to the Point of Beginning; thence, continuing along said North line, North 84°59'40" East 107.41 feet to the West line of Cherry Street extended; thence, along said West line, South 00°00'00" 244.00 feet; thence South 90°00'00" West 107.00 feet; thence North 00°00'00" 234.63 feet to the Point of Beginning. Said parcel of land contains 0.589 acres, including 0.081 acres of county road right of way.

I HEREBY CERTIFY THAT THIS PLAN, SPECIFICATION, PLAT, MAP, SURVEY OR REPORT WAS MADE BY ME OR UNDER MY DIRECT PERSONAL SUPERVISION AND THAT I AM A DULY REGISTERED PROFESSIONAL ENGINEER AND LAND SURVEYOR UNDER THE LAWS OF THE STATE OF IOWA

SIGNED *Charles T. Vance* DATE 10 July 1991
 Charles T. Vance, P.E. & L.S. Iowa Reg. No. 5041

VANCE & HOCHSTETLER, P.C.
 CONSULTING ENGINEERS
 71 JEFFERSON
 WINTERSET, IOWA 50273