

PLAT OF SURVEY FOR MARK REED
OF LOT 1 AND THE EAST HALF OF LOT 2,
BLOCK 21, WEST ADDITION, CITY OF WINTERSET,
MADISON COUNTY, IOWA.

FILED NO. **2354**
TOWN BOOK 2 PAGE 144

COMPARED

92 MAR 31 PM 4: 10

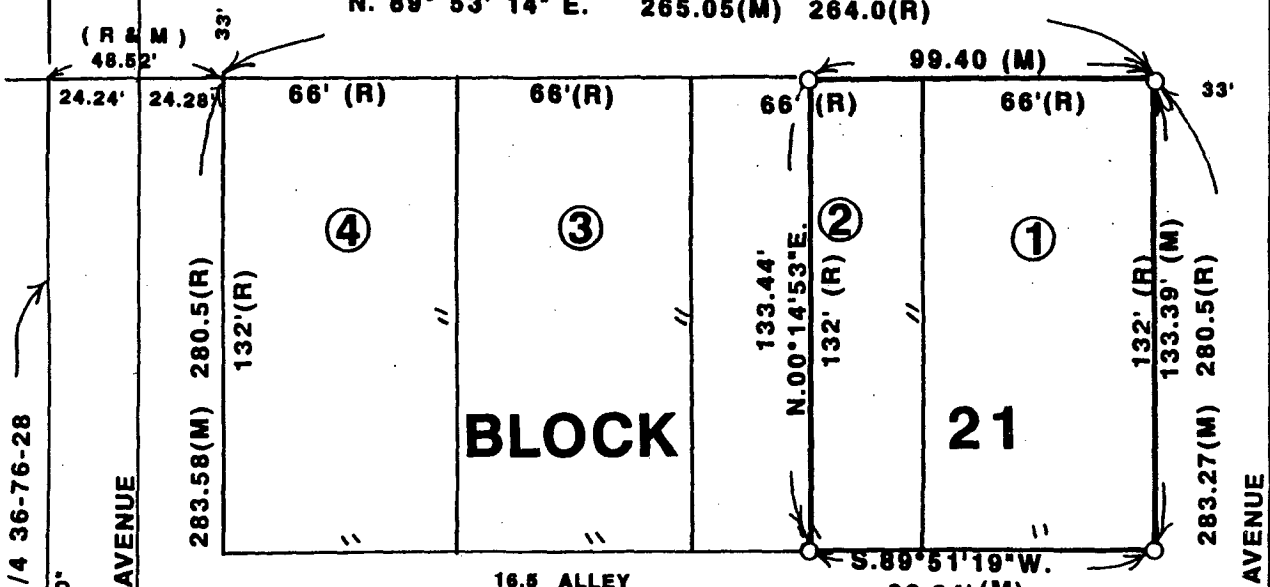
COMPUTER

MICHELLE UTSLER
RECORDER
MADISON COUNTY, IOWA

See #500

☪ JEFFERSON

N. 89° 53' 14" E. 265.05(M) 264.0(R)



BLOCK 21

WEST ADDITION

WEST LINE SE. 1/4 36-76-28

☪ 8TH AVENUE

☪ 7TH AVENUE

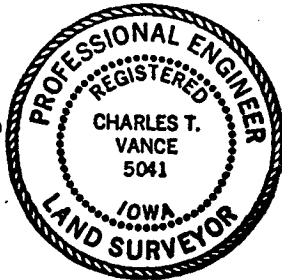
16.5 ALLEY

☪ COURT AVENUE

- ☒ FOUND "X" IN CONCRETE SIDEWALK
- SET C.I.R. # 5041
- (R) RECORDED DIMENSION
- (M) MEASURED DIMENSION

I HEREBY CERTIFY THAT THIS PLAN, SPECIFICATION, PLAT, MAP, SURVEY OR REPORT WAS MADE BY ME OR UNDER MY DIRECT PERSONAL SUPERVISION AND THAT I AM A DULY REGISTERED PROFESSIONAL ENGINEER AND LAND SURVEYOR UNDER THE LAWS OF THE STATE OF IOWA

SIGNED *Charles T. Vance* DATE 9 March 1992
Charles T. Vance, P.E. & L.S. Iowa Reg. No. 5041



SCALE: 1" = 50'



VANCE & HOCHSTETLER, P.C.
CONSULTING ENGINEERS
71 JEFFERSON
WINTERSET, IOWA 50273