

COMPARED

PLAT OF SURVEY FOR UNION STATE BANK OF LOT - 1,
H & K SUBDIVISION IN THE TOWN OF TRURO, MADISON COUNTY, IOWA.

FILED NO. **1501**

TOWN

BOOK **2** PAGE **134**

91 DEC 23 AM 10: 49

MICHELLE UTSLER
RECORDER
MADISON COUNTY, IOWA

Fee \$5.00

I HEREBY CERTIFY THAT THIS PLAN, SPECIFICALLY THAT MAP, SURVEY OR REPORT WAS MADE BY ME OR UNDER MY DIRECT PERSONAL SUPERVISION AND THAT I AM A DULY REGISTERED PROFESSIONAL ENGINEER AND LAND SURVEYOR UNDER THE LAWS OF THE STATE OF IOWA

SIGNED

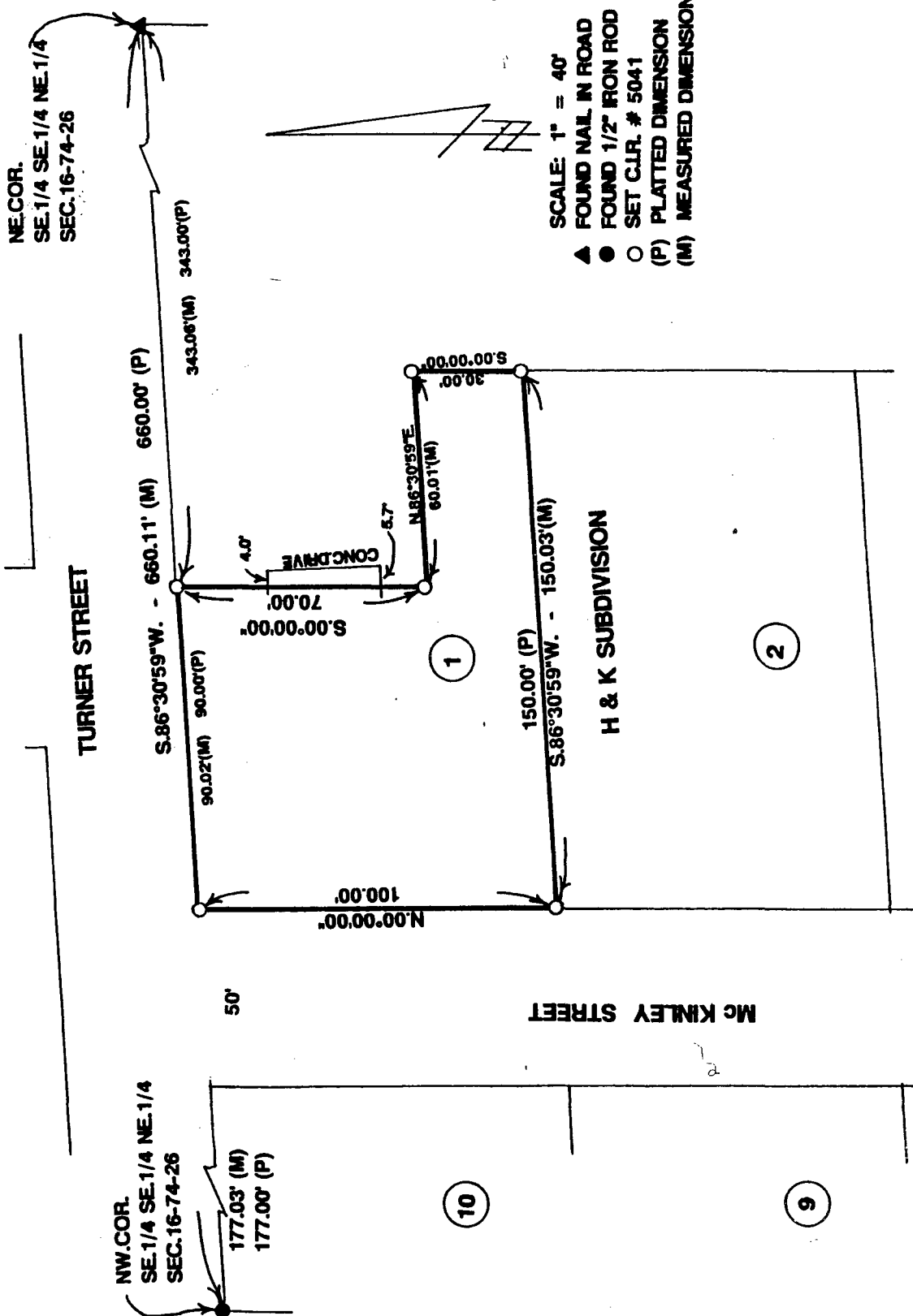
Charles T. Vance 5 Dec. 1991

Charles T. Vance, P.E. & L.S. Iowa Reg. No. 5041

VANCE & HOCHSTETLER, P.C.
CONSULTING ENGINEERS

71 JEFFERSON

WINTERSET IOWA 50273



- SCALE: 1" = 40'
- ▲ FOUND NAIL IN ROAD
 - FOUND 1/2" IRON ROD
 - SET C.I.R. # 5041
 - (P) PLATTED DIMENSION
 - (M) MEASURED DIMENSION