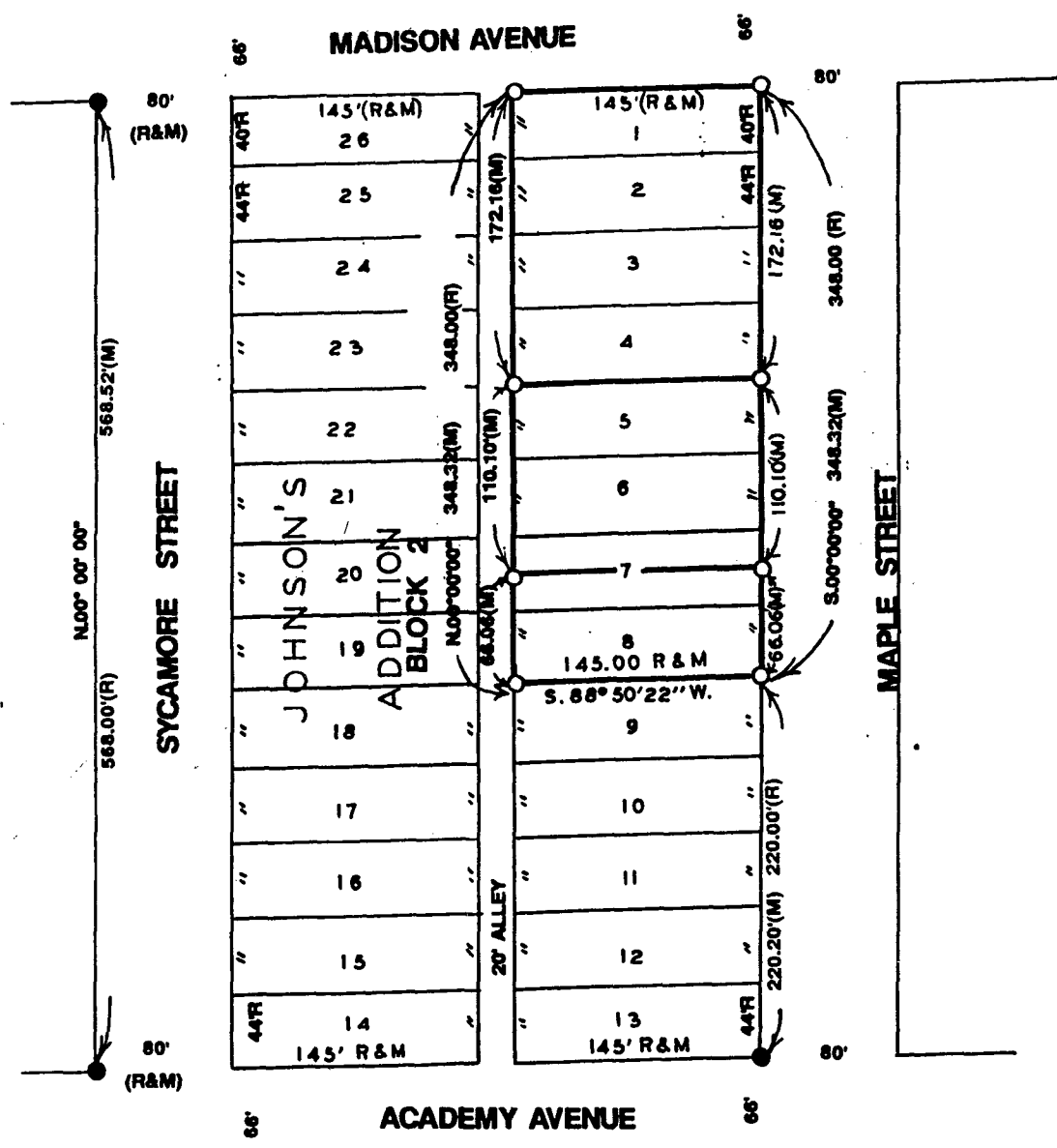


PLAT OF SURVEY MADE FOR BILL HUNTER OF LOTS 1, 2, 3, 4, 5, 6, 7 & 8, BLOCK 2, JOHNSON'S ADDITION TO THE CITY OF EARLHAM, MADISON COUNTY, IOWA.

SCALE 1" = 100'



COMPARED

Fee \$5.00

- FOUND 1" IRON PIN
○ SET C.I.R. # 5041
(R) RECORDED DIMENSION
(M) MEASURED DIMENSION

FILED NO. 1277
TOWN BOOK 2 PAGE 132
91 NOV 20 AM 8:50
MICHELLE UTSLER
RECORDER
MADISON COUNTY, IOWA

I HEREBY CERTIFY THAT THIS PLAN, SPECIFICATION, PLAT, MAP, SURVEY OR REPORT WAS MADE BY ME OR UNDER MY DIRECT PERSONAL SUPERVISION AND THAT I AM A DULY REGISTERED PROFESSIONAL ENGINEER AND LAND SURVEYOR UNDER THE LAWS OF THE STATE OF IOWA

SIGNED Charles T. Vance DATE 24 Oct. 1991
Charles T. Vance, P.E. & L.S. Iowa Reg. No. 5041

VANCE & HOCHSTETLER, P.C.
CONSULTING ENGINEERS
71 JEFFERSON
WINTERSET, IOWA 50273