

PLAT OF SURVEY MADE AT THE REQUEST OF DON WUBBENA
 OF LOT 7, HELEN Mc CALL HUNTOON ADDITION PLAT - 3, CITY OF WINTERSET,
 MADISON COUNTY, IOWA.

Fee \$5.00

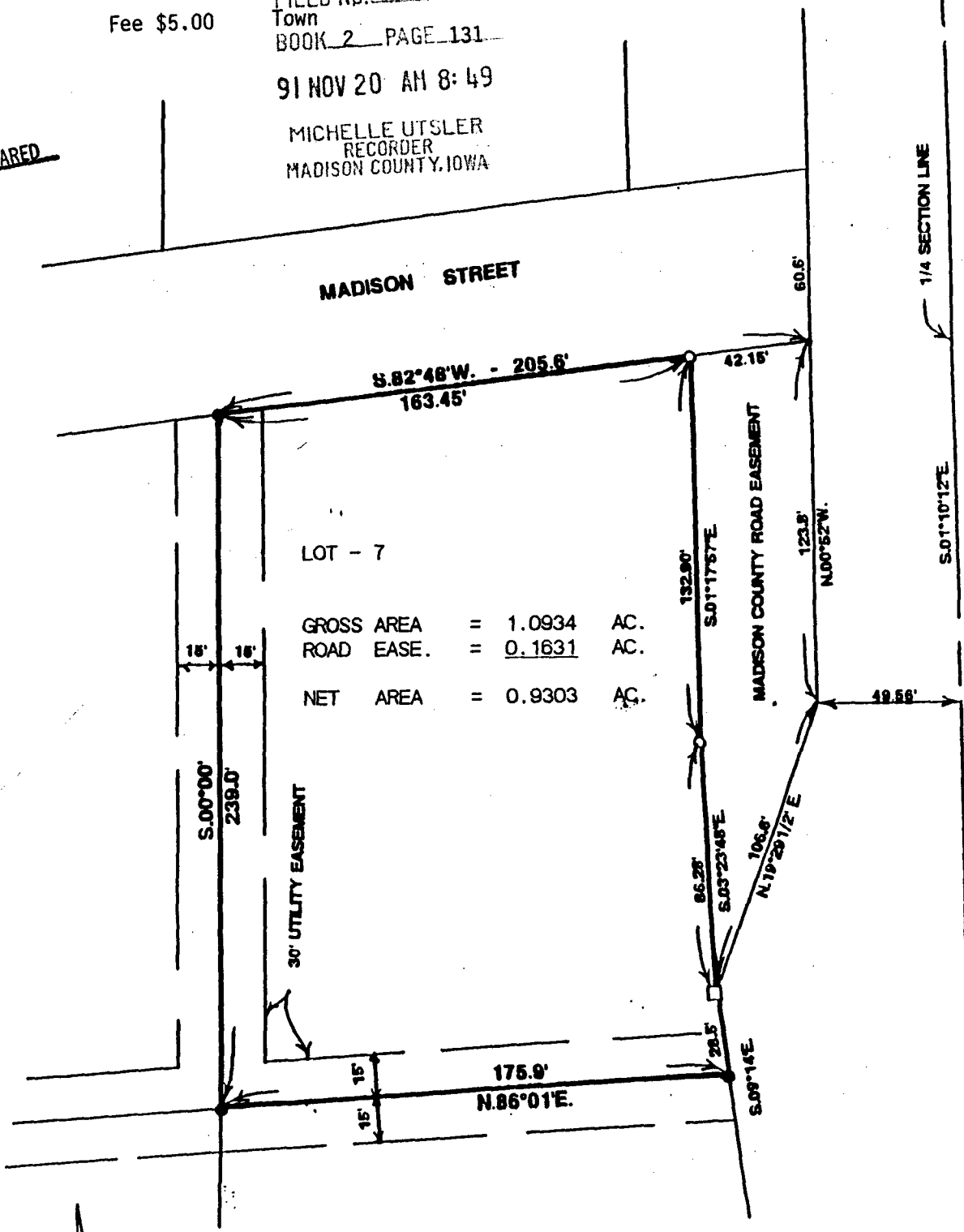
FILED NO. **1276**

Town
 BOOK 2 PAGE 131

91 NOV 20 AM 8:49

MICHELLE UTSLER
 RECORDER
 MADISON COUNTY, IOWA

COMPARED



LOT - 7

GROSS AREA = 1.0934 AC.
 ROAD EASE. = 0.1631 AC.
 NET AREA = 0.9303 AC.

SCALE: 1" = 50'

- FOUND IRON PIN
- FOUND D.O.T. RAIL
- SET C.I.R. #5041

I HEREBY CERTIFY THAT THIS PLAN, SPECIFICATION, PLAT, MAP, SURVEY OR REPORT WAS MADE BY ME OR UNDER MY DIRECT PERSONAL SUPERVISION AND THAT I AM A DULY REGISTERED PROFESSIONAL ENGINEER AND LAND SURVEYOR UNDER THE LAWS OF THE STATE OF IOWA

SIGNED *Charles T. Vance* DATE 15 Nov. 1991
 Charles T. Vance, P.E. & L.S. Iowa Reg. No. 5041

VANCE & HOCHSTETLER, P.C.
 CONSULTING ENGINEERS
 71 JEFFERSON
 WINTERSET, IOWA 50273