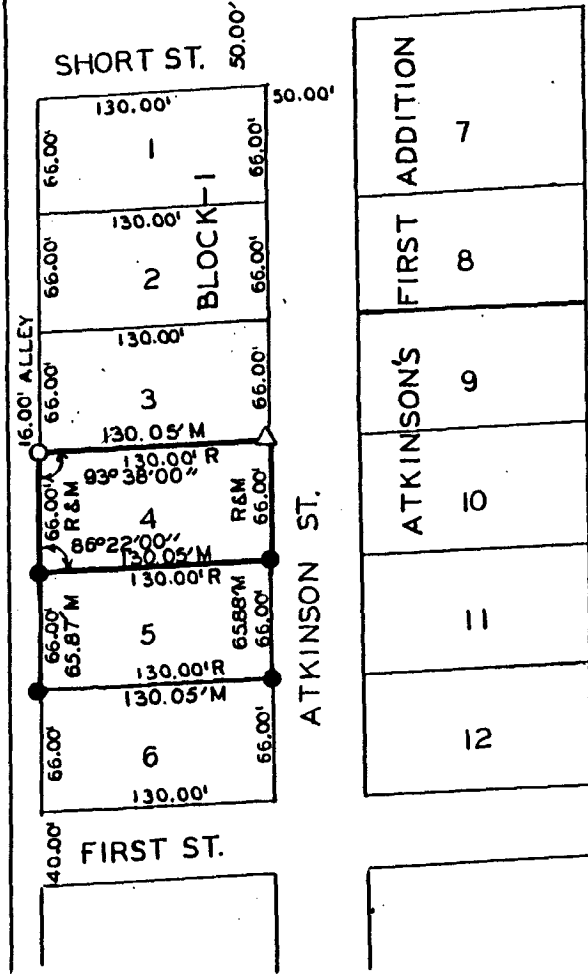


PLAT OF A SURVEY MADE FOR CHARLES DE ANGELIS  
OF LOT 4, BLOCK 1, ATKINSON'S FIRST ADDITION TO THE CITY  
OF TRURO, MADISON COUNTY, IOWA.

N. LINE SW 1/4 SW 1/4 SEC. 16-74-26



COMPARED

FILED NO. **798**  
Town  
BOOK 2 PAGE 129  
91 SEP 18 AM 9:29  
MICHELLE UTSLER  
RECORDER  
MADISON COUNTY, IOWA  
Fee \$5.00

DESCRIPTION:

Lot 4, Block 1, Atkinson's First Addition to  
the City of Truro, Madison County, Iowa.



SCALE: 1"=100'

I HEREBY CERTIFY THAT THIS PLAN, SPECIFICATION, PLAT, MAP, SURVEY OR REPORT WAS MADE BY ME OR UNDER MY DIRECT PERSONAL SUPERVISION AND THAT I AM A DULY REGISTERED PROFESSIONAL ENGINEER AND LAND SURVEYOR UNDER THE LAWS OF THE STATE OF IOWA  
SIGNED \_\_\_\_\_ DATE \_\_\_\_\_

*Charles T. Vance* 10 Sept. 1991  
Charles T. Vance, P.E. & L.S. Iowa Reg. No. 5041

- FOUND C.I.R. # 6808
- △ SET NAIL IN TREE ROOT
- SET C.I.R. # 5041
- (R) RECORDED DIMENSION
- (M) MEASURED DIMENSION

VANCE & HOCHSTETLER, P.C.  
CONSULTING ENGINEERS