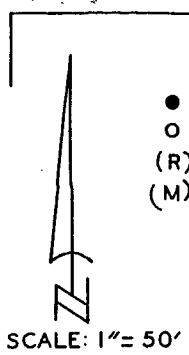
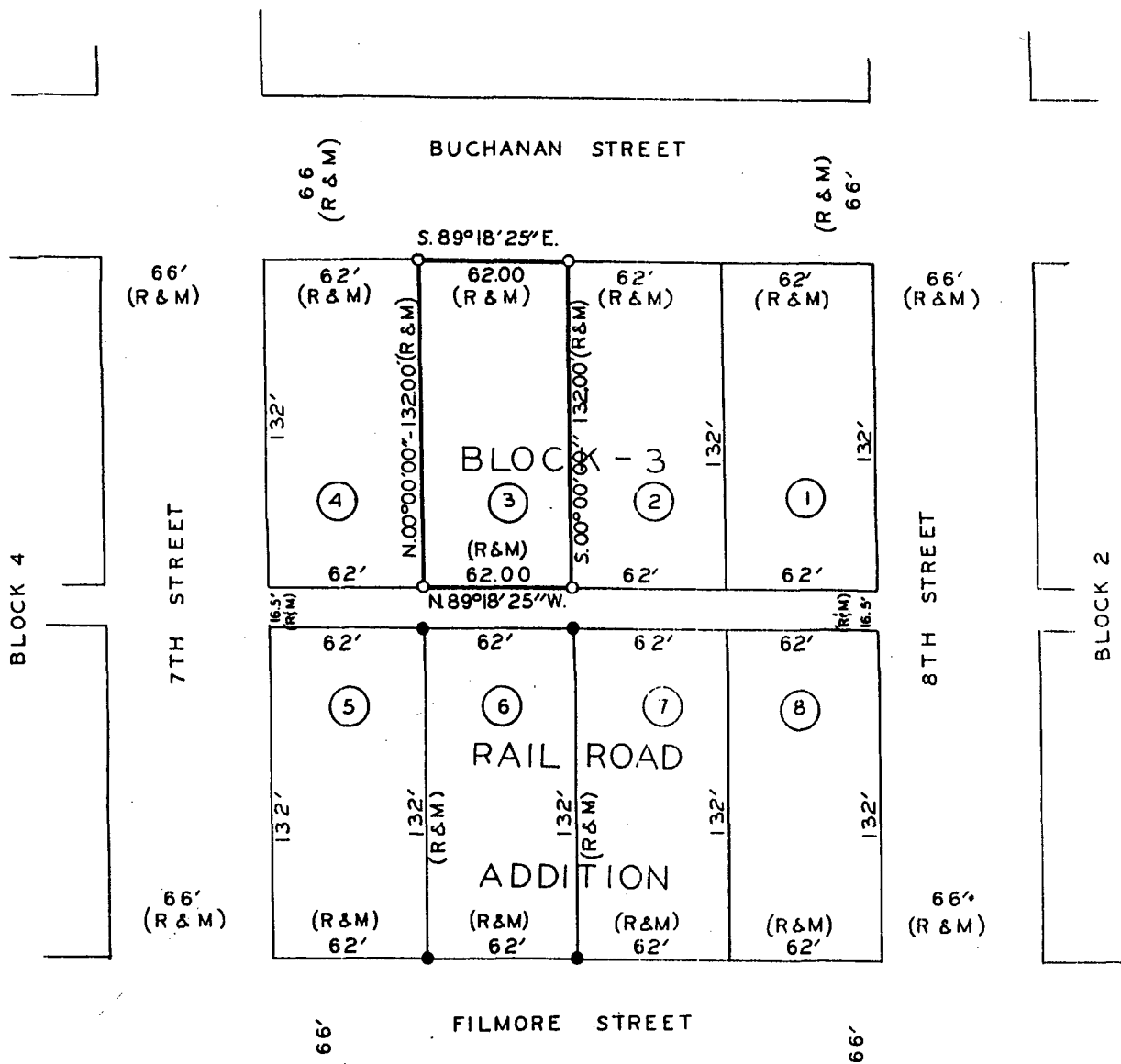


TOWN PLAT 2

PLAT OF SURVEY FOR KEITH MILLSAP OF LOT 3,
BLOCK 3, RAILROAD ADDITION, CITY OF WINTERSET,
MADISON COUNTY, IOWA.



- FOUND 1/2" IRON ROD
- SET C.I.R. # 5041
- (R) RECORDED DIMENSION
- (M) MEASURED DIMENSION

See #500

COMPARED

FILED NO. **415**
Town
BOOK 2 PAGE 128

91 AUG -7 AM 9: 50

MICHELLE UTSLER
RECORDER
MADISON COUNTY, IOWA

I HEREBY CERTIFY THAT THIS PLAN, SPECIFICATION, PLAT, MAP, SURVEY OR REPORT WAS MADE BY ME OR UNDER MY DIRECT PERSONAL SUPERVISION AND THAT I AM A DULY REGISTERED PROFESSIONAL ENGINEER AND LAND SURVEYOR UNDER THE LAWS OF THE STATE OF IOWA.

SIGNED *Charles T. Vance* DATE *10 July 1991*
Charles T. Vance, P.E. & L.S. Iowa Reg. No. 5041

VANCE & HOCHSTETLER, P.C.
CONSULTING ENGINEERS
71 JEFFERSON
WINTERSET, IOWA 50273