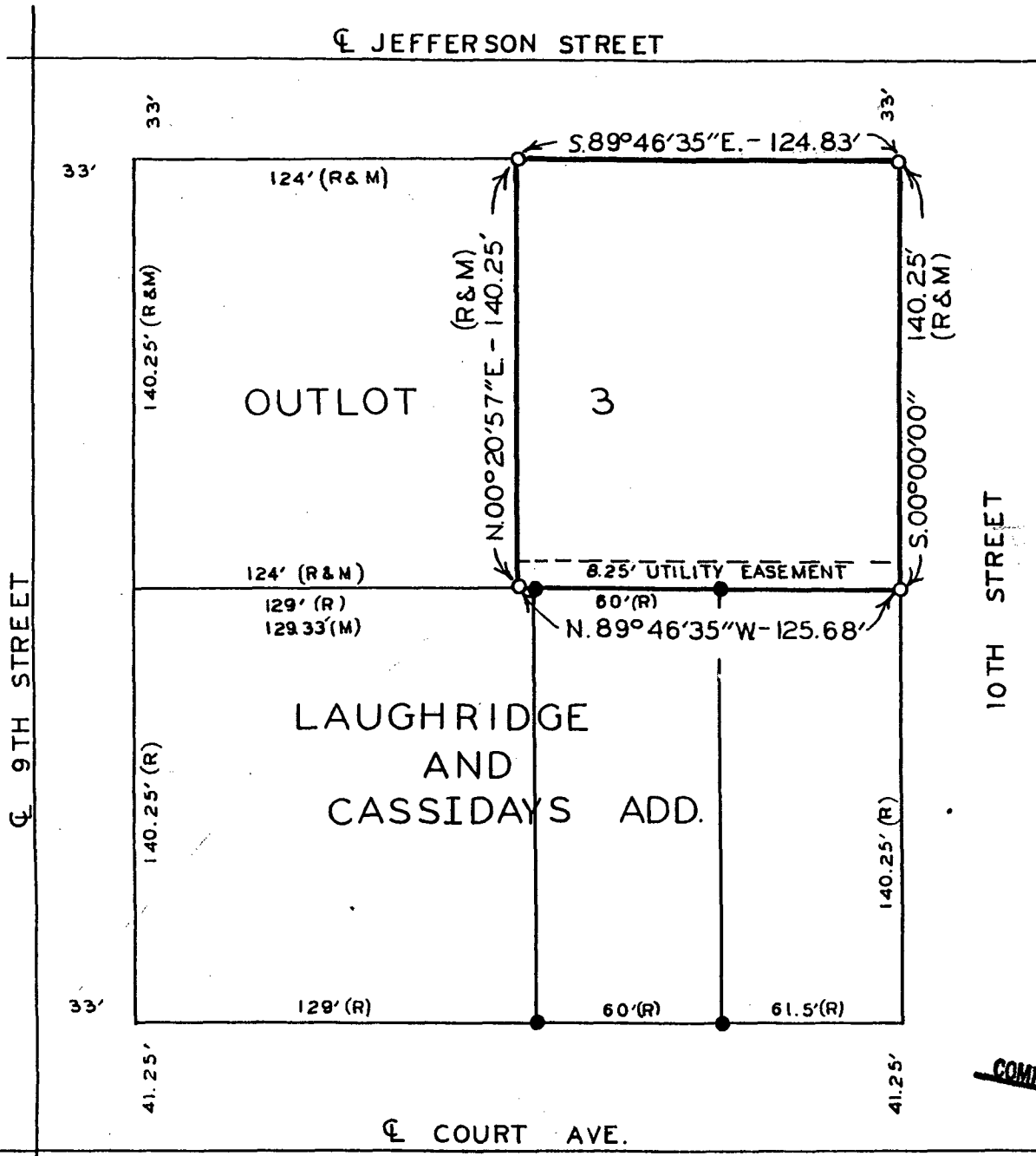
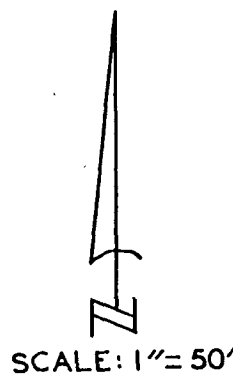


PLAT OF SURVEY FOR MIKE NEVINS OF THE N. 1/2 OF
OUTLOT 3, EXCEPT THE WEST 124 FEET THEREOF,
LAUGHRIDGE AND CASSIDAYS ADDITION, CITY OF WINTERSSET,
MADISON COUNTY, IOWA.



COMPARED



- FOUND 1/2" IRON ROD
- SET C.I.R.# 5041
- (R) RECORDED DIMENSION
- (M) MEASURED DIMENSION

FILED NO. **2452**
 Town
 BOOK **2** PAGE **112**
 91 MAY 30 AM 10:40
 MICHELLE UTSLER
 RECORDER
 MADISON COUNTY, IOWA
 Fee \$5.00

I HEREBY CERTIFY THAT THIS PLAN, SPECIFICATION, PLAT, MAP, SURVEY OR REPORT WAS MADE BY ME OR UNDER MY DIRECT PERSONAL SUPERVISION AND THAT I AM A DULY REGISTERED PROFESSIONAL ENGINEER AND LAND SURVEYOR UNDER THE LAWS OF THE STATE OF IOWA.
 SIGNED _____ DATE _____

Charles T. Vance 19 April 1991
 Charles T. Vance, P.E. & L.S. Iowa Reg. No. 5041

VANCE & HOCHSTETLER, P.C.
 CONSULTING ENGINEERS
 71 JEFFERSON
 WINTERSSET, IOWA 50273