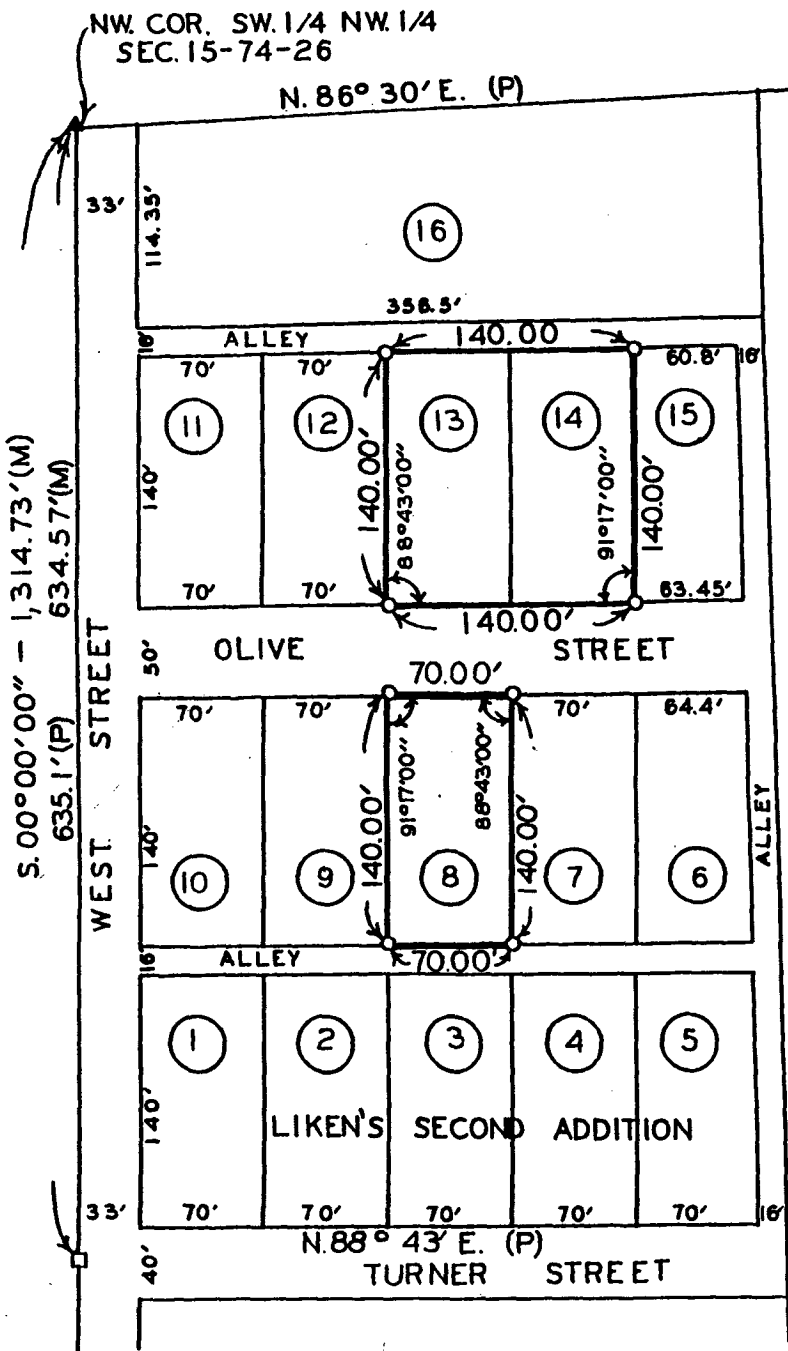


PLAT OF SURVEY MADE FOR CHUCK SMITH OF LOT 8,
 LOT 13, AND LOT 14, LIKEN'S SECOND ADDITION
 TO THE CITY OF TRURO, MADISON COUNTY, IOWA.



SCALE: 1" = 100'

- ▲ FOUND 3/4" IRON ROD
- FOUND P. K. NAIL
- SET NAIL OVER R.R. SPIKE
- SET C.I.R. # 5041

CG COMPARED

Fee \$5.00 FILED NO. **2078**
 TOWN PLAT BOOK 2 PAGE 111

91 APR 12 PM 3:44

MICHELLE UTSLER
 RECORDER
 MADISON COUNTY, IOWA

I HEREBY CERTIFY THAT THIS PLAN, SPECIFICATION, PLAT, MAP, SURVEY OR REPORT WAS MADE BY ME OR UNDER MY DIRECT PERSONAL SUPERVISION AND THAT I AM A DULY REGISTERED PROFESSIONAL ENGINEER AND LAND SURVEYOR UNDER THE LAWS OF THE STATE OF IOWA

SIGNED *Charles T. Vance* DATE *6 March 1991*
 Charles T. Vance, P.E. & L.S. Iowa Reg. No. 5041

VANCE & HOCHSTETLER, P.C.
 CONSULTING ENGINEERS
 71 JEFFERSON
 WINTERSET, IOWA 50273

TOWN PLAT 2