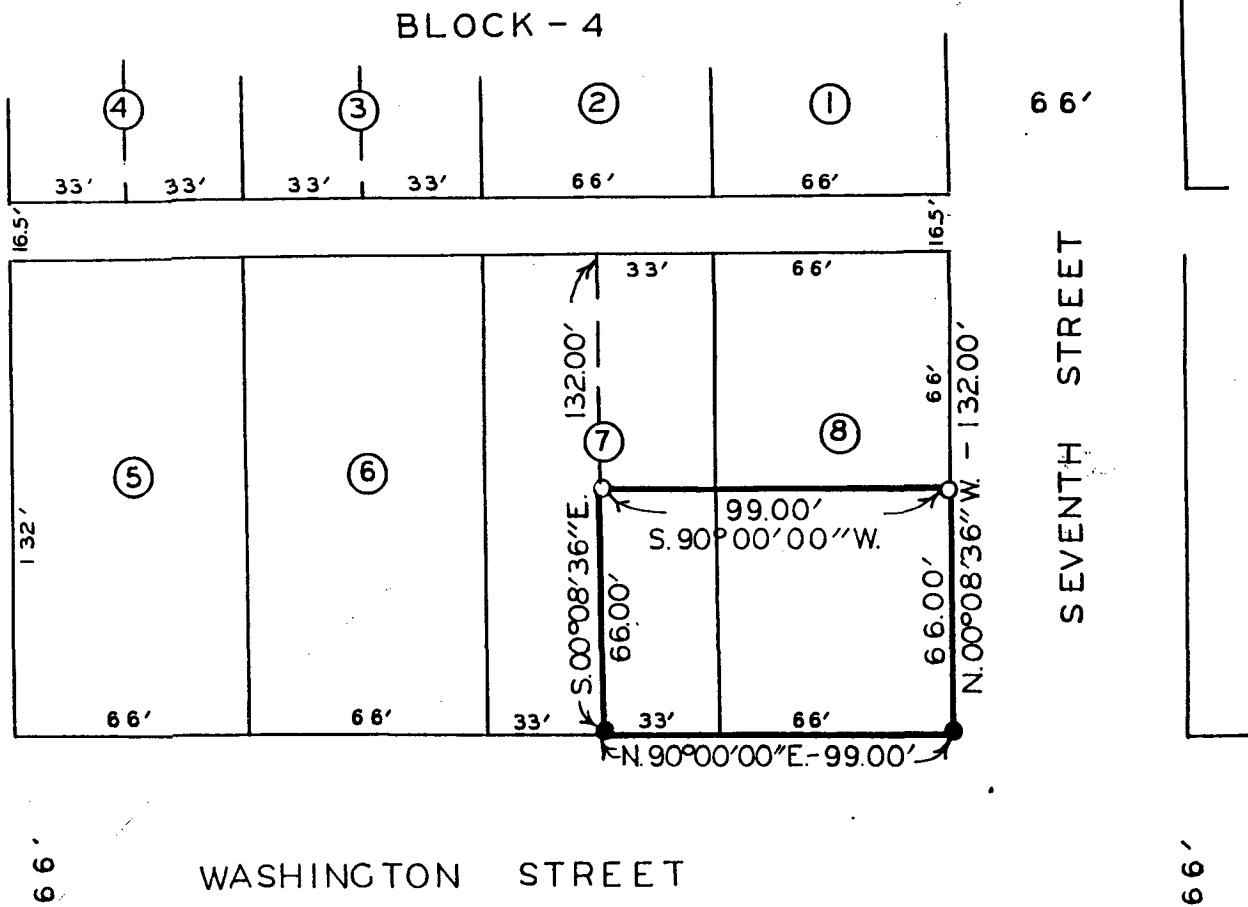


PLAT OF SURVEY FOR ZELDA SCHWABE OF THE SOUTH HALF OF LOT 8 AND THE SOUTH HALF OF THE EAST HALF OF LOT 7, BLOCK 4, LAUGHRIDGE & CASSIDAY'S ADDITION TO THE CITY OF WINTERSET, MADISON COUNTY, IOWA.



- FOUND C.I.R.#8034
- SET C.I.R.# 5041



SCALE: 1" = 50'

FILED NO. **1048**
 BOOK 2 PAGE 107
 TOWN PLAT
 90 NOV -9 PH 3: 02
 MARY E. WELTY
 RECORDER
 MADISON COUNTY, IOWA
 Fee \$ 5.00

I HEREBY CERTIFY THAT THIS PLAN, SPECIFICATION, PLAT, MAP, SURVEY OR REPORT WAS MADE BY ME OR UNDER MY DIRECT PERSONAL SUPERVISION AND THAT I AM A DULY REGISTERED PROFESSIONAL ENGINEER AND LAND SURVEYOR UNDER THE LAWS OF THE STATE OF IOWA

SIGNED *Charles T. Vance* DATE *5 30 1990*
 Charles T. Vance, P.E. & L.S. Iowa Reg. No. 5041

VANCE & HOCHSTETLER, P.C.
 CONSULTING ENGINEERS
 71 JEFFERSON
 WINTERSET, IOWA 50273