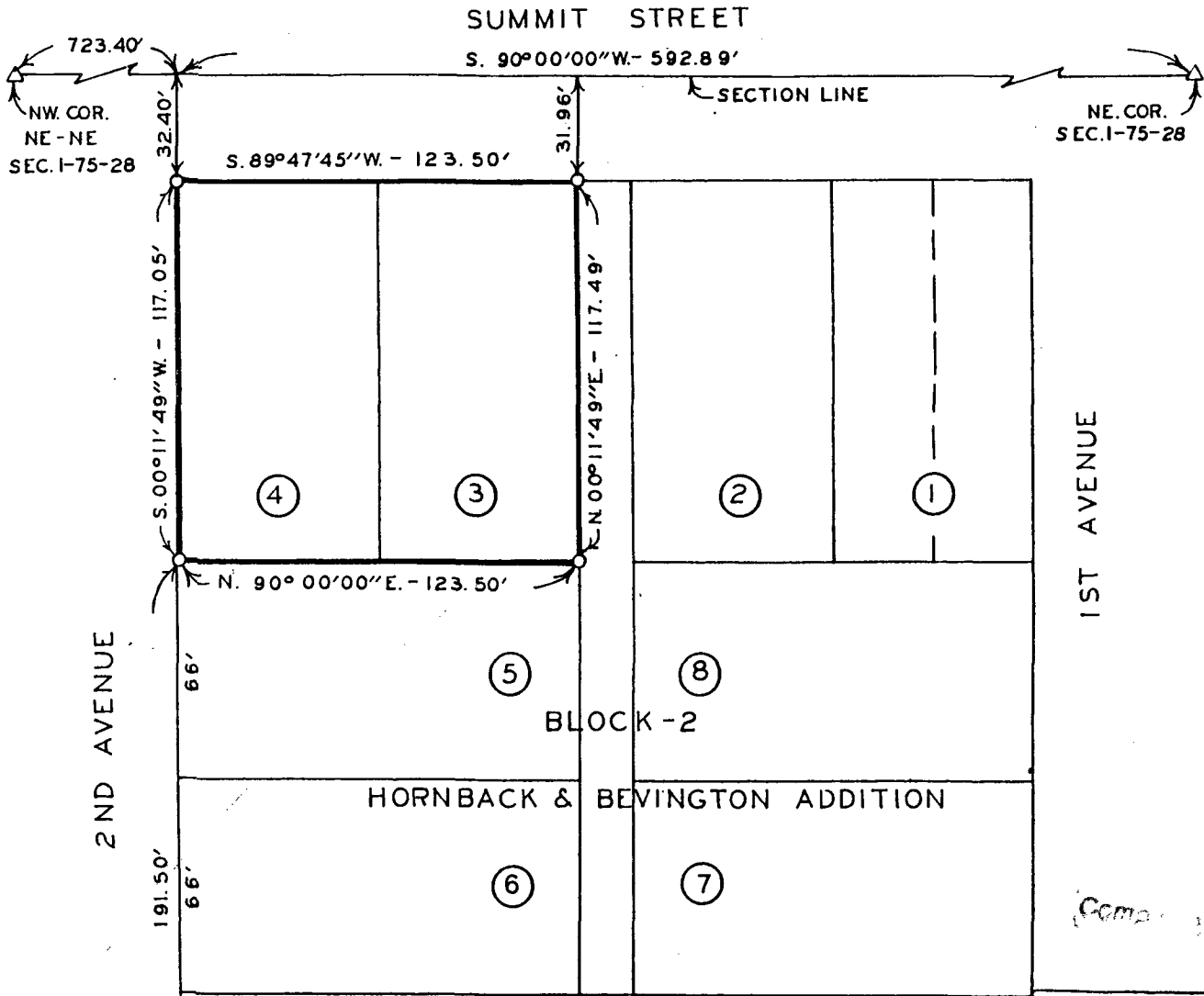


PLAT OF SURVEY FOR PAUL Mc KINNEY OF LOTS 3 AND 4,
BLOCK-2, HORNBACK & BEVINGTON ADDITION TO THE CITY OF WINTERSET,
MADISON COUNTY, IOWA.



FILED NO. **1047**

BOOK 2 PAGE 106
TOWN PLAT
90 NOV -9 PH 3:01

MARY E. WELTY
RECORDER
MADISON COUNTY, IOWA

SCALE: 1" = 50'

- △ FOUND PK NAIL
- FOUND 1/2" IRON ROD. Fee \$ 5.00
- ▲ FOUND C.I.R. # 5041
- SET C.I.R. # 5041

I HEREBY CERTIFY THAT THIS PLAN, SPECIFICATION, PLAT, MAP, SURVEY OR REPORT WAS MADE BY ME OR UNDER MY DIRECT PERSONAL SUPERVISION AND THAT I AM A DULY REGISTERED PROFESSIONAL ENGINEER AND LAND SURVEYOR UNDER THE LAWS OF THE STATE OF IOWA

SIGNED *Charles T. Vance* DATE 28 Sept. 1990
Charles T. Vance, P.E. & L.S. Iowa Reg. No. 5041

VANCE & HOCHSTETLER, P.C.
CONSULTING ENGINEERS
71 JEFFERSON
WINTERSET, IOWA 50273