

PLAT OF SURVEY FOR DELBERT R. Mc DANIEL OF LOT 1,
 HUNTER'S 1ST ADDITION, CITY OF EARLHAM,
 MADISON COUNTY, IOWA.

COMPARED

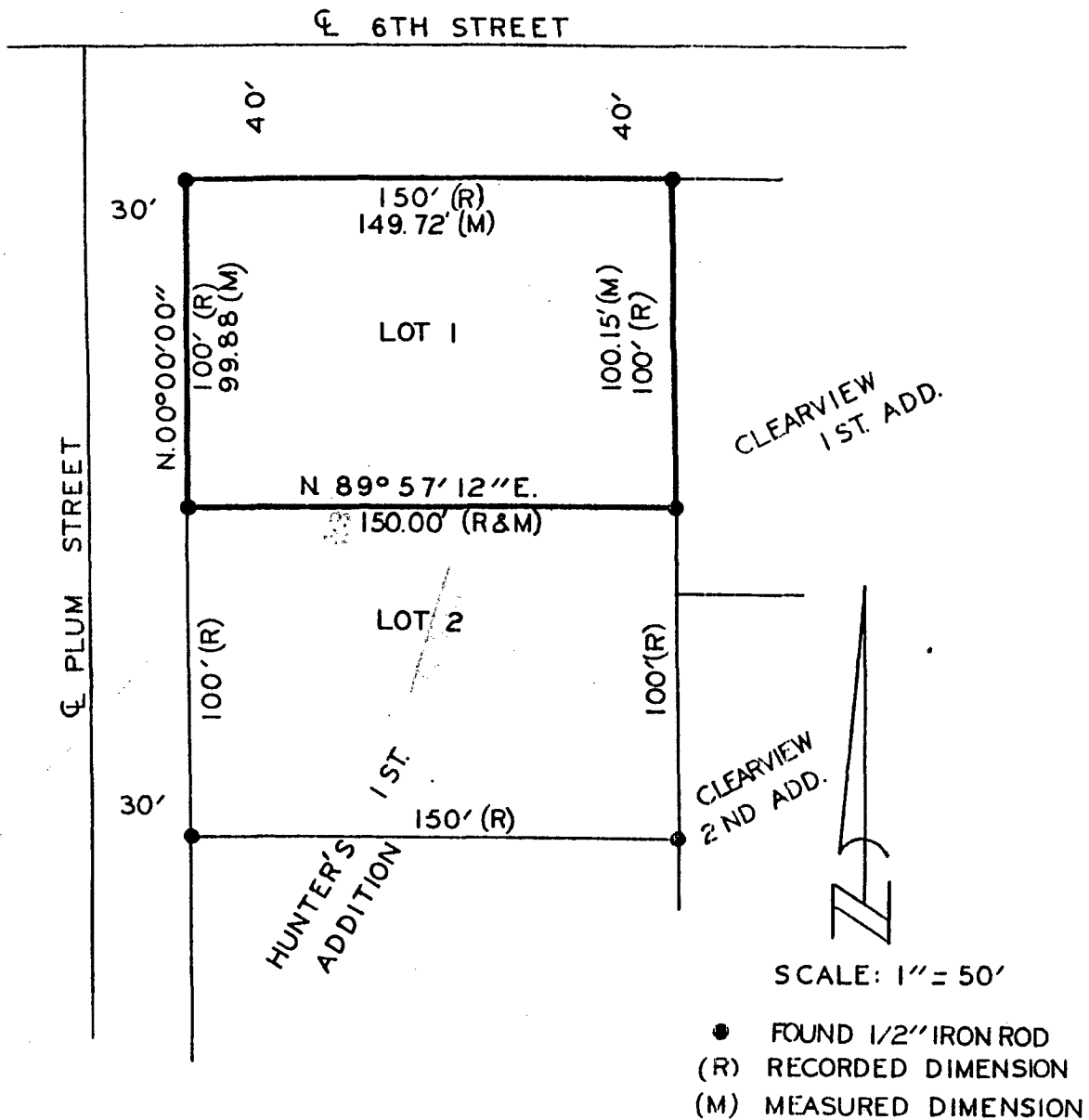
145

FILED NO. 145
 Town Plat
 BOOK 2 PAGE 121

Fee \$5.00

91 JUL 17 PH 2:44

MICHELLE UTSLER
 RECORDER
 MADISON COUNTY, IOWA



I HEREBY CERTIFY THAT THIS PLAN, SPECIFICATION, PLAT, MAP, SURVEY OR REPORT WAS MADE BY ME OR UNDER MY DIRECT PERSONAL SUPERVISION AND THAT I AM A DULY REGISTERED PROFESSIONAL ENGINEER AND LAND SURVEYOR UNDER THE LAWS OF THE STATE OF IOWA

SIGNED Charles T. Vance DATE 10 July 1991
 Charles T. Vance, P.E. & L.S. Iowa Reg. No. 5041

VANCE & HOCHSTETLER, P.C.
 CONSULTING ENGINEERS
 71 JEFFERSON
 WINTERSET, IOWA 50273

TOWN PLAT 2