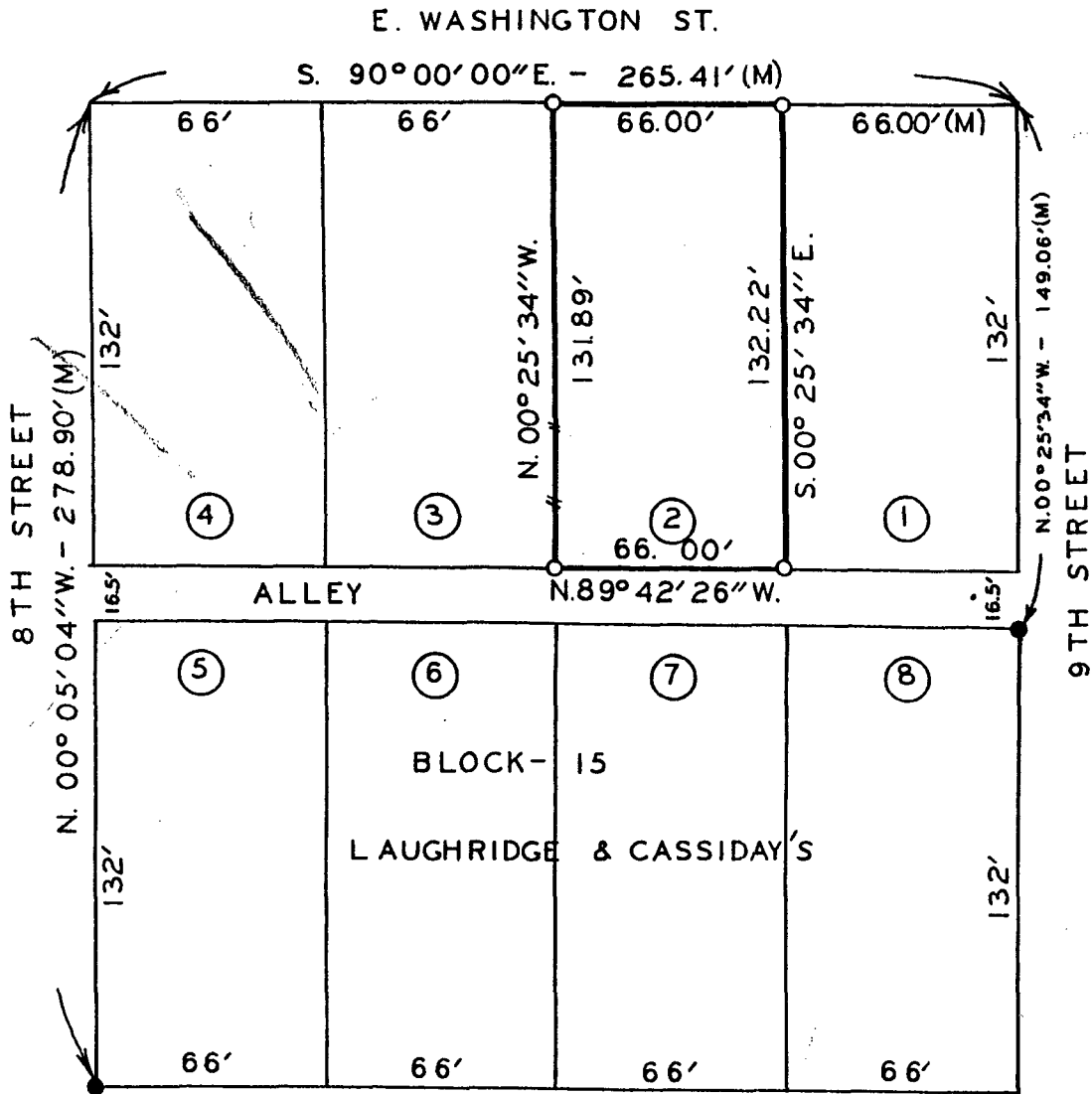


PLAT OF SURVEY FOR DWIGHT LAUER OF LOT - 2,  
 BLOCK 15 OF LAUGHRIDGE & CASSIDAY'S ADDITION  
 TO THE CITY OF WINTERSET, MADISON COUNTY, IOWA.

**COMPARED**

Town Plat FILED NO. 143  
 Fee \$5.00 BOOK 2 PAGE 119  
 91 JUL 17 PH 2:42  
 MICHELLE UTSLER  
 RECORDER  
 MADISON COUNTY, IOWA



SCALE: 1" = 50'

- FOUND 1/2" IRON ROD
- SET C.I.R. # 5041
- (M) MEASURED DIMENSION

I HEREBY CERTIFY THAT THIS PLAN, SPECIFICATION, PLAT, MAP, SURVEY OR REPORT WAS MADE BY ME OR UNDER MY DIRECT PERSONAL SUPERVISION AND THAT I AM A DULY REGISTERED PROFESSIONAL ENGINEER AND LAND SURVEYOR UNDER THE LAWS OF THE STATE OF IOWA

SIGNED Charles T. Vance DATE 20 June 1991  
 Charles T. Vance, P.E. & L.S. Iowa Reg. No. 5041

VANCE & HOCHSTETLER, P.C.  
 CONSULTING ENGINEERS  
 71 JEFFERSON  
 WINTERSET, IOWA 50273

Town Plat 2