

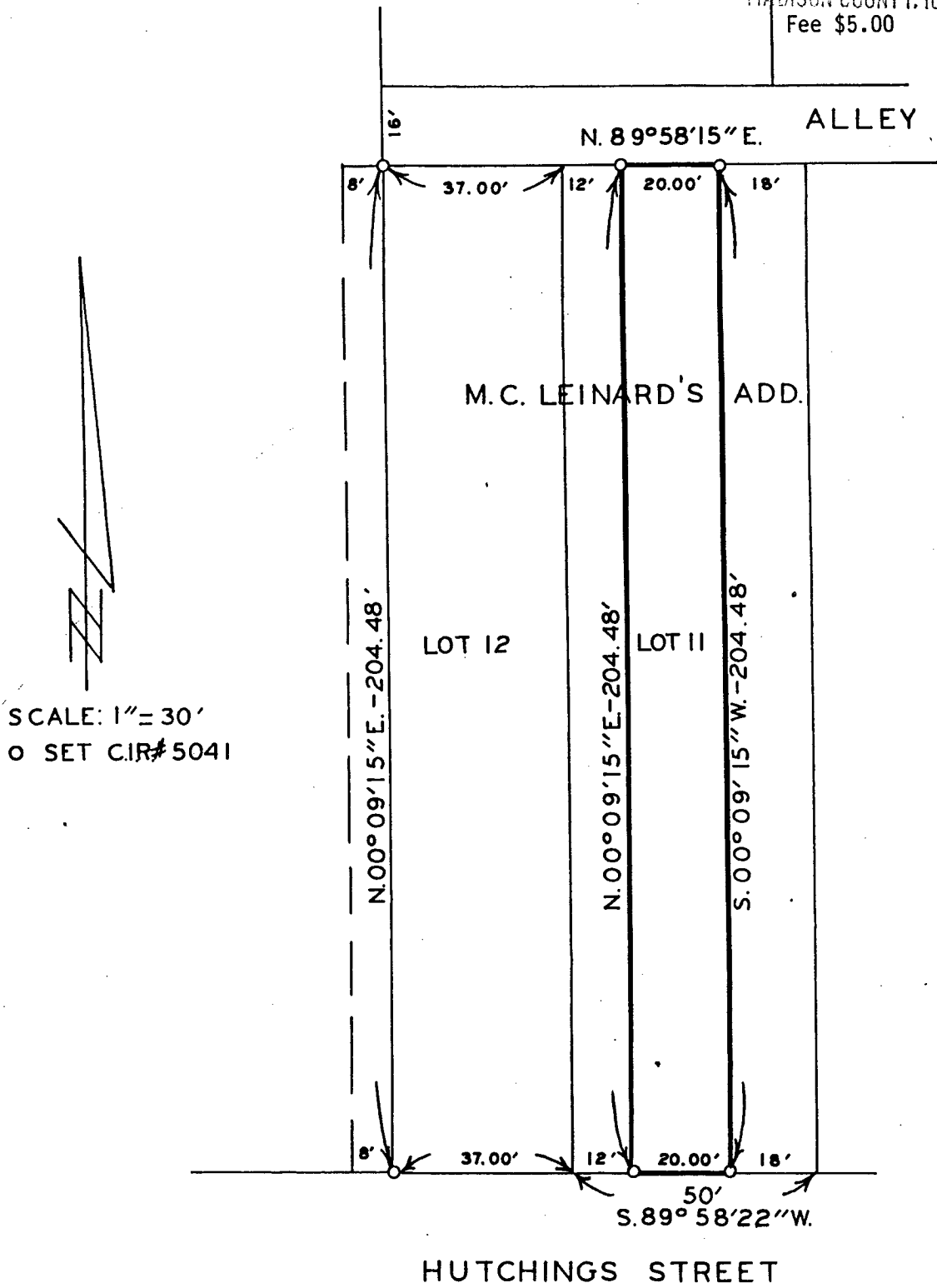
PLAT OF SURVEY FOR JIM RANDOLPH OF THE WEST 20.00 FEET
 OF THE EAST 38.00 FEET OF LOT 11, M.C. LEINARD'S ADDITION
 TO THE CITY OF WINTERSET, MADISON COUNTY, IOWA.

FILED NO. **707**
 TOWN Plat
 BOOK 2 PAGE 103

90 SEP 26 PM 2:11

Compared

MARY E. WELTY
 RECORDER
 MADISON COUNTY, IOWA
 Fee \$5.00



SCALE: 1" = 30'
 O SET C.I.R.# 5041

I HEREBY CERTIFY THAT THIS PLAN, SPECIFICATION, PLAT, MAP, SURVEY OR REPORT WAS MADE BY ME OR UNDER MY DIRECT PERSONAL SUPERVISION AND THAT I AM A DULY REGISTERED PROFESSIONAL ENGINEER AND LAND SURVEYOR UNDER THE LAWS OF THE STATE OF IOWA

SIGNED *Charles T. Vance* DATE *10 Sept. 1990*
 Charles T. Vance, P.E. & L.S. Iowa Reg. No. 5041

VANCE & HOCHSTETLER, P.C.
 CONSULTING ENGINEERS
 71 JEFFERSON
 WINTERSET, IOWA 50273