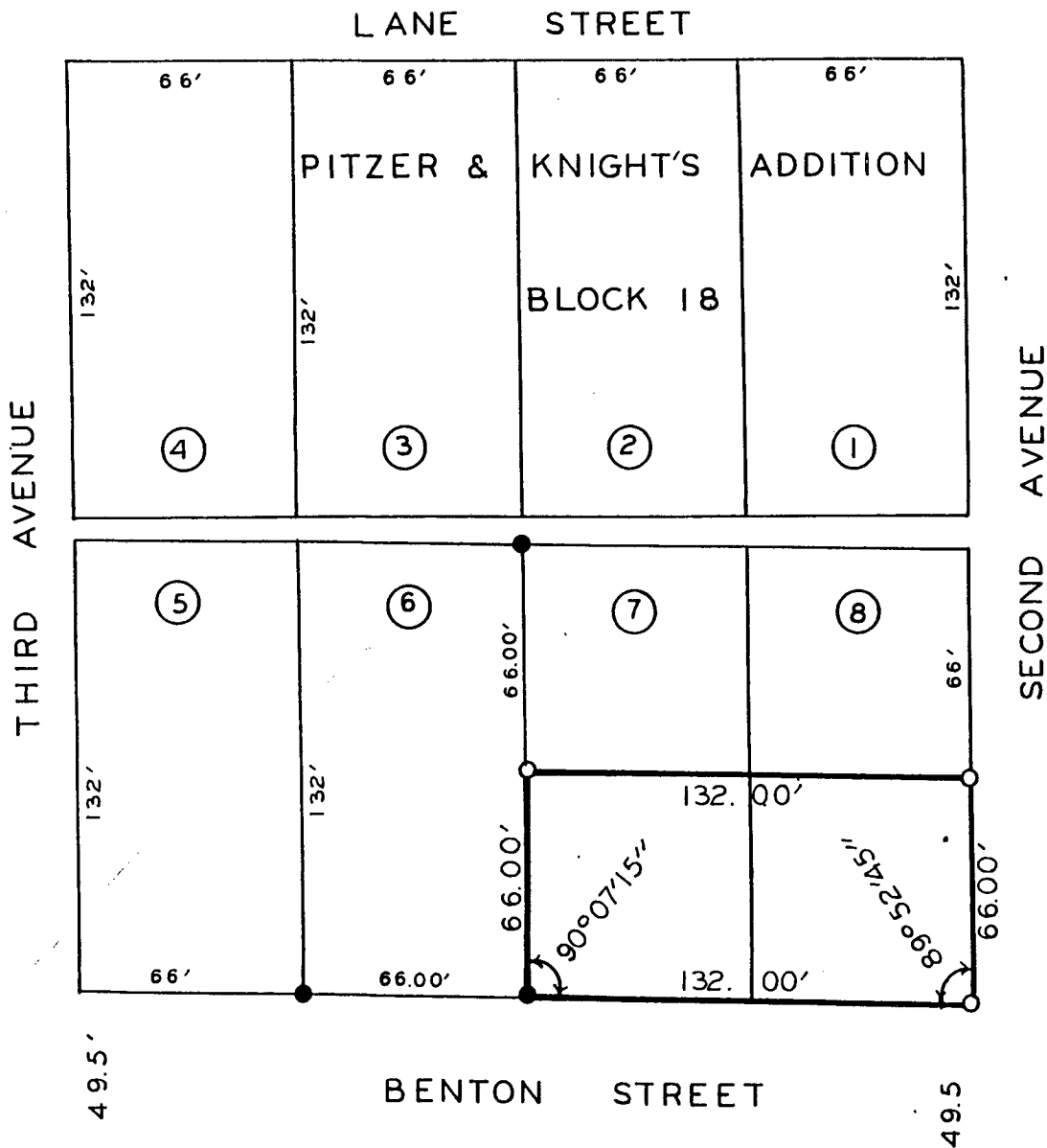


PLAT OF SURVEY MADE FOR MILDRED DAVIS OF THE SOUTH HALF OF LOTS 7 AND 8, BLOCK 18, PITZER & KNIGHT'S ADDITION TO THE CITY OF WINTERSET, MADISON COUNTY, IOWA.



SCALE: 1" = 50'
 ● FOUND C.I.R.#5041
 ○ SET C.I.R.#5041

FILED NO. **706**
 Town Plat
 BOOK 2 PAGE 102

Compared

90 SEP 26 PM 2: 10

MARY E. WELTY
 RECORDER
 MADISON COUNTY, IOWA
 Fee \$5.00

I HEREBY CERTIFY THAT THIS PLAN, SPECIFICATION, PLAT, MAP, SURVEY OR REPORT WAS MADE BY ME OR UNDER MY DIRECT PERSONAL SUPERVISION AND THAT I AM A DULY REGISTERED PROFESSIONAL ENGINEER AND LAND SURVEYOR UNDER THE LAWS OF THE STATE OF IOWA
 SIGNED _____ DATE _____

Charles T. Vance 5 Sept. 1990
 Charles T. Vance, P.E. & L.S. Iowa Reg. No. 5041

VANCE & HOCHSTETLER, P.C.
 CONSULTING ENGINEERS
 71 JEFFERSON
 WINTERSET, IOWA 50273