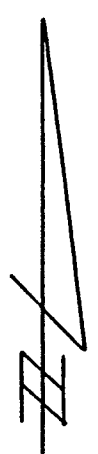
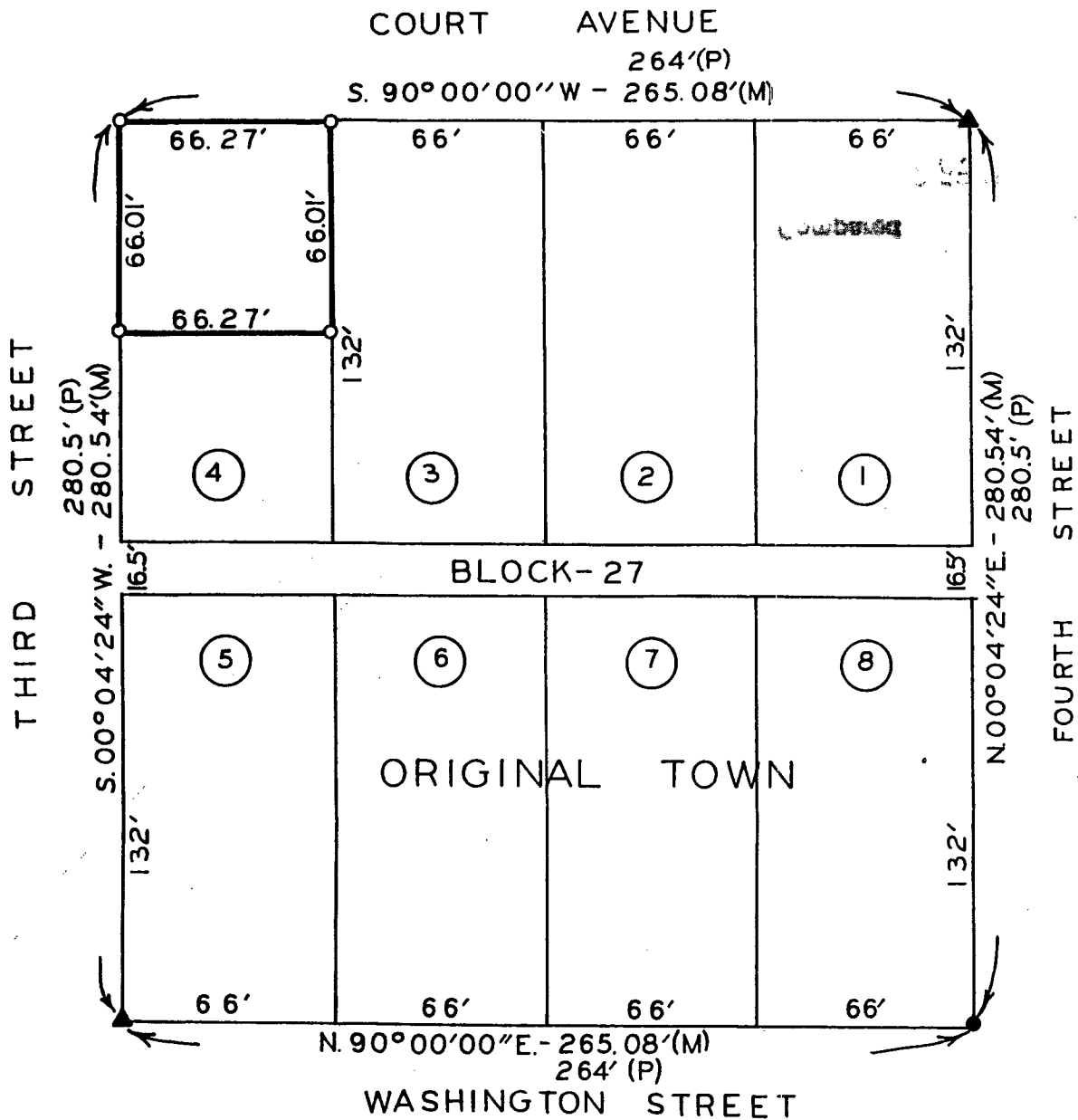


PLAT OF SURVEY FOR BEVERLY HOLTMYER OF THE NORTH HALF OF
 LOT FOUR IN BLOCK TWENTY-SEVEN OF THE ORIGINAL TOWN OF
 WINTERSET, MADISON COUNTY, IOWA.



- SCALE: 1" = 50'
- SET C.I.R. # 5041
 - FOUND C.I.R.#5041
 - ▲ FOUND NAIL
 - (P) PLATTED DIMENSION
 - (M) MEASURED DIMENSION

Compared

IND. REC. PAGE

FILED NO. **2656**

BOOK 2 PAGE 97

TOWN PLAT

90 JUN 22 AM 10:27

MARY E. WELTY
 RECORDER
 MADISON COUNTY, IOWA
 Fee \$5.00

I HEREBY CERTIFY THAT THIS PLAN, SPECIFICATION, PLAT, MAP, SURVEY OR REPORT WAS MADE BY ME OR UNDER MY DIRECT PERSONAL SUPERVISION AND THAT I AM A DULY REGISTERED PROFESSIONAL ENGINEER AND LAND SURVEYOR UNDER THE LAWS OF THE STATE OF IOWA

SIGNED *Charles T. Vance* DATE 16 March 1990

Charles T. Vance, P.E. & L.S. Iowa Reg. No. 5041

VANCE & HOCHSTETLER, P.C.
 CONSULTING ENGINEERS
 71 JEFFERSON
 WINTERSET, IOWA 50273