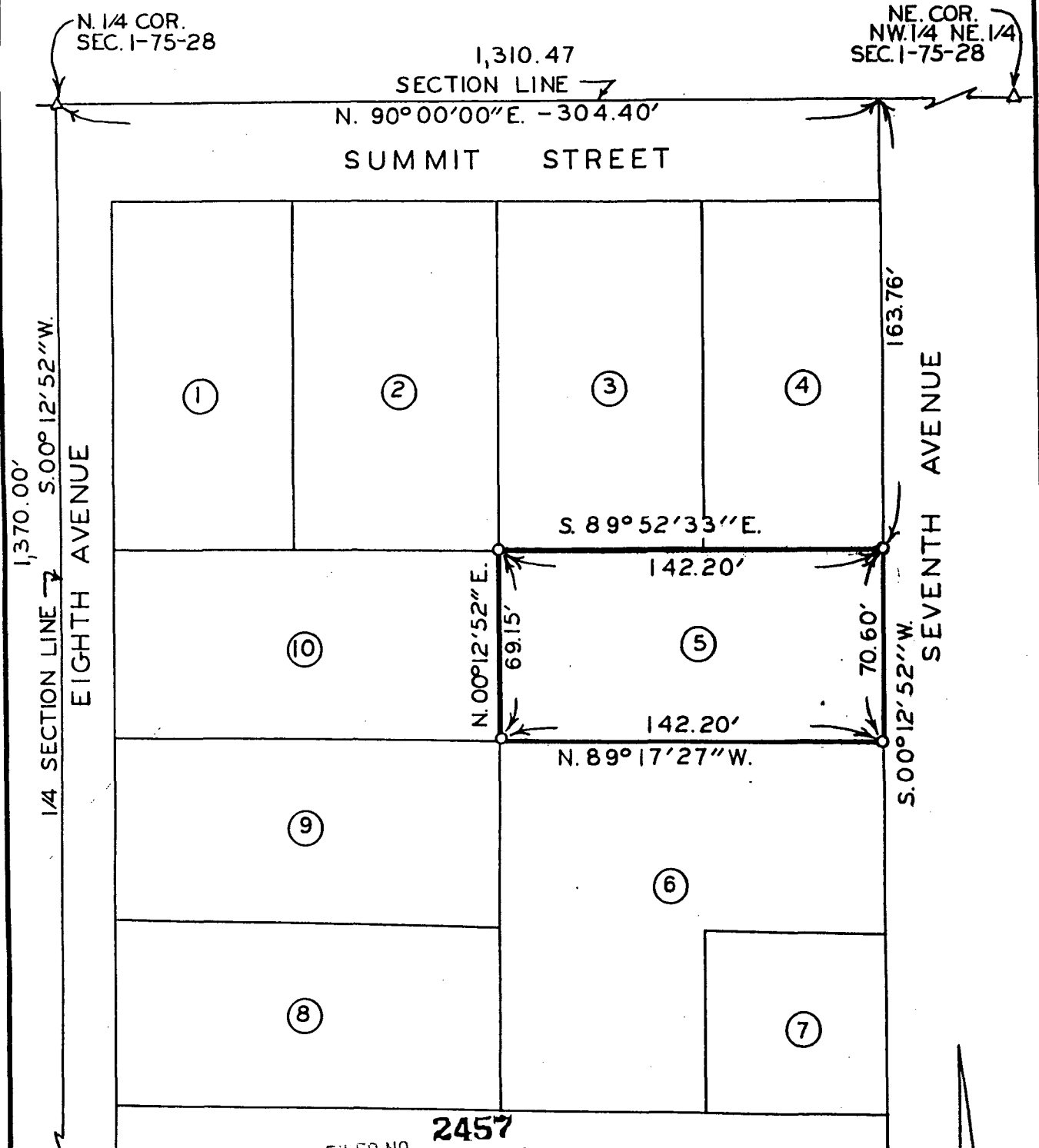


PLAT OF SURVEY FOR TODD AND SHELLY HAM OF LOT 5 IN THE  
SUBDIVISION OF LOTS 11, 12 AND 13 OF HUTCHING ADDITION  
TO THE CITY OF WINTERSET, MADISON COUNTY, IOWA.



FILED NO. **2457**  
 BOOK 2 PAGE 95  
 TOWN PLAT  
 90 MAY 30 AM 11:00

SW. COR.  
 NW. 1/4 NE. 1/4  
 SEC. 1-75-28

MARY E. WELTY  
 RECORDER  
 MADISON COUNTY, IOWA  
 Fee \$5.00

SCALE: 1" = 50'  
 Δ FOUND P-K NAIL  
 □ FOUND CUT "X"  
 ○ SET C.I.R. # 5041

I HEREBY CERTIFY THAT THIS PLAN, SPECIFICATION, PLAT, MAP, SURVEY OR REPORT WAS MADE BY ME OR UNDER MY DIRECT PERSONAL SUPERVISION AND THAT I AM A DULY REGISTERED PROFESSIONAL ENGINEER AND LAND SURVEYOR UNDER THE LAWS OF THE STATE OF IOWA  
 SIGNED \_\_\_\_\_ DATE \_\_\_\_\_

*Charles T. Vance* 20 March 1990  
 Charles T. Vance, P.E. & L.S. Iowa Reg. No. 5041

VANCE & HOCHSTETLER, P.C.  
 CONSULTING ENGINEERS  
 71 JEFFERSON  
 WINTERSET, IOWA 50273