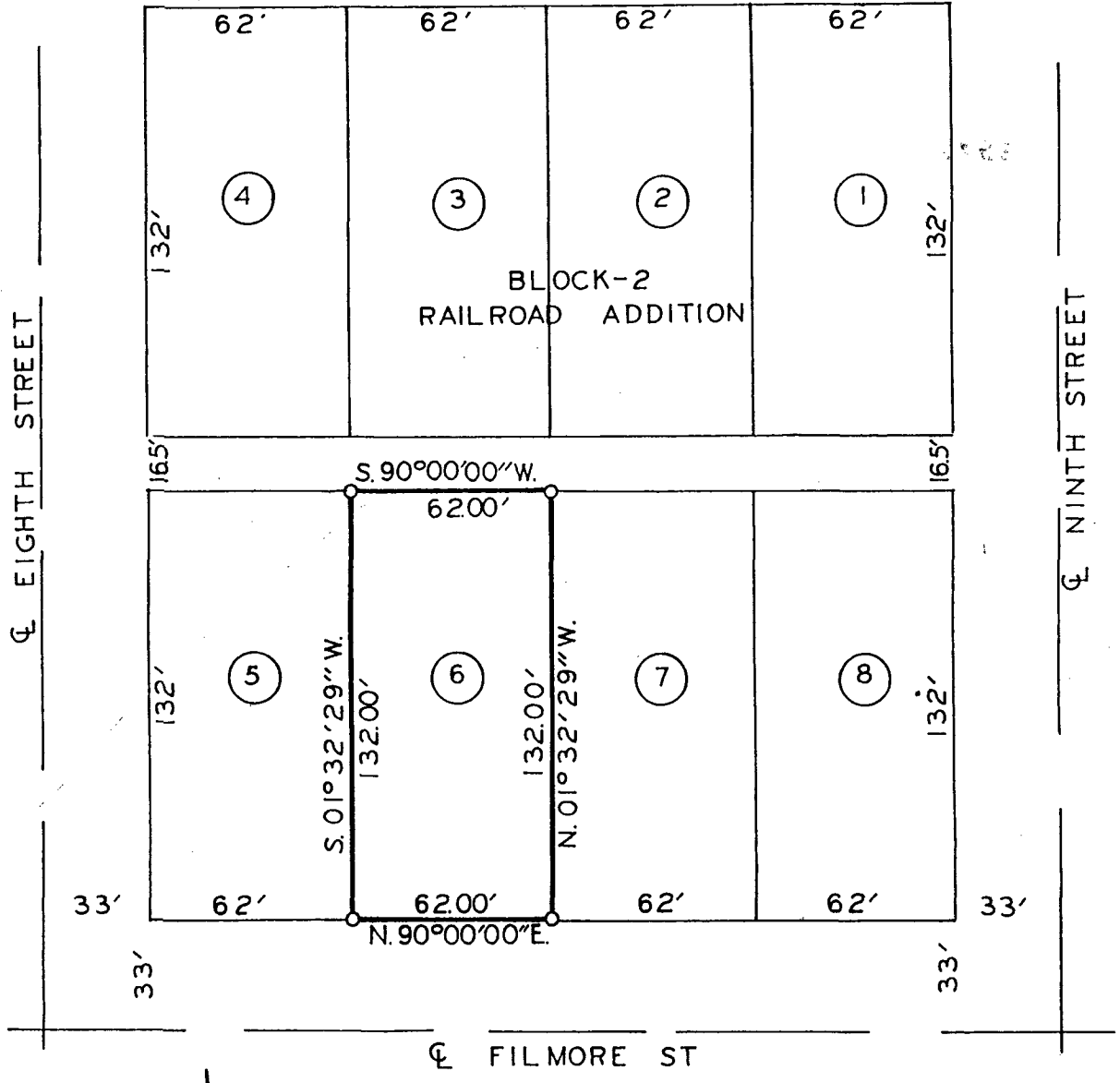


PLAT OF SURVEY FOR TOM ALLEN OF LOT 6, BLOCK 2,
RAILROAD ADDITION TO THE CITY OF WINTERSET,
MADISON COUNTY, IOWA.



SCALE: 1" = 50'
o SET C.I.R. #5041

I HEREBY CERTIFY THAT THIS PLAN, SPECIFICATION, PLAT, MAP, SURVEY OR REPORT WAS MADE BY ME OR UNDER MY DIRECT PERSONAL SUPERVISION AND THAT I AM A DULY REGISTERED PROFESSIONAL ENGINEER AND LAND SURVEYOR UNDER THE LAWS OF THE STATE OF IOWA

SIGNED *Charles T. Vance* DATE *26 April 1990*
Charles T. Vance, P.E. & L.S. Iowa Reg. No. 5041

VANCE & HOCHSTETLER, P.C.
CONSULTING ENGINEERS
71 JEFFERSON
WINTERSET, IOWA 50273

FILED NO. **2455**
BOOK 2 PAGE 93
TOWN PLAT
90 MAY 30 AM 10:58
MARY E. WELTY
RECORDER
MADISON COUNTY, IOWA
Fee \$5.00