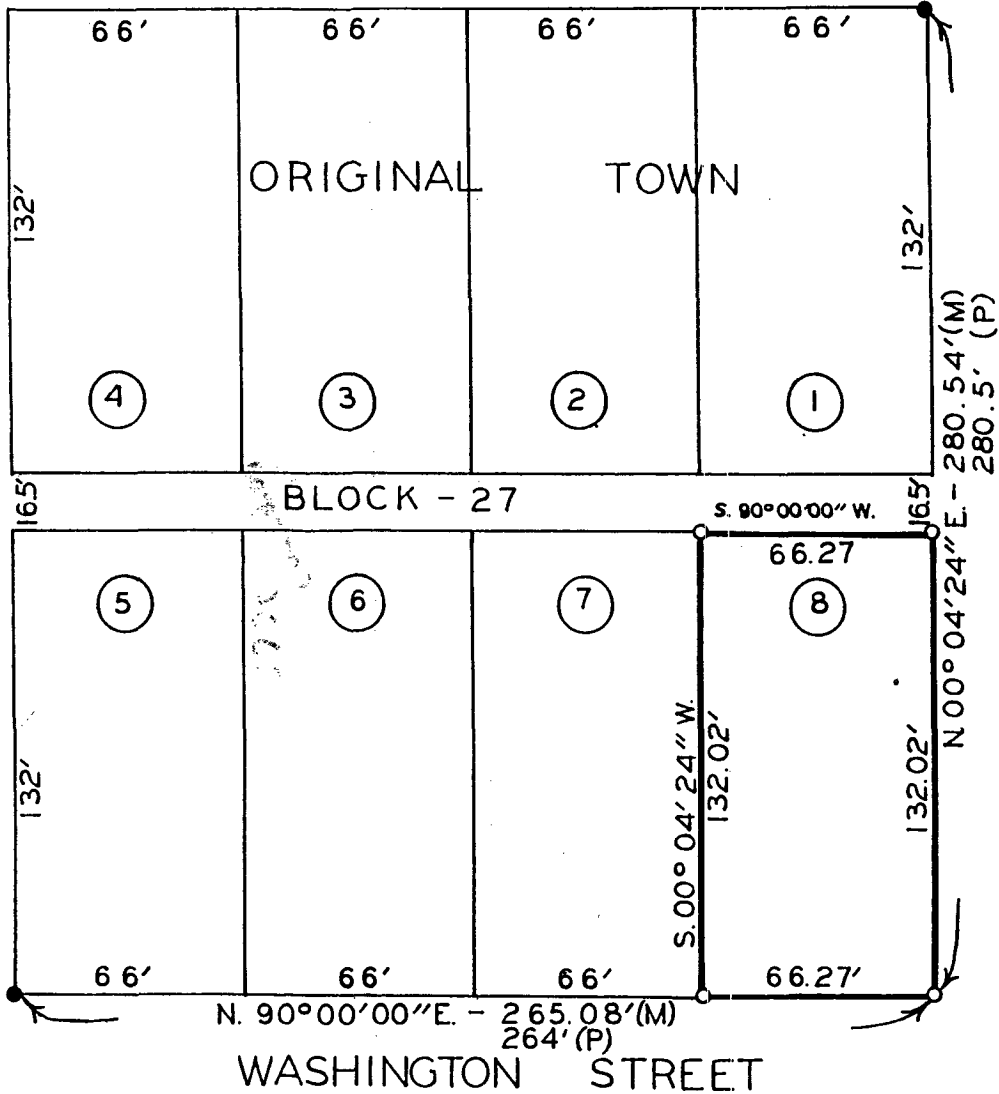


PLAT OF SURVEY FOR DAVE WILLIAMS OF LOT EIGHT
 IN BLOCK TWENTY-SEVEN OF THE ORIGINAL TOWN OF
 WINTERSET, MADISON COUNTY, IOWA.

COURT AVENUE



THIRD STREET

FOURTH STREET

WASHINGTON STREET

- SCALE: 1" = 50'
- SET C.I.R.#5041
 - SET NAIL
 - (P) PLATTED DIMENSION
 - (M) MEASURED DIMENSION



FILED NO. **1701**
 BOOK 2 PAGE 91
 TOWN PLAT
 90 FEB 21 PM 1:38
 MARY E. WELTY
 RECORDER
 MADISON COUNTY, IOWA
 Fee \$5.00

I HEREBY CERTIFY THAT THIS PLAN, SPECIFICATION, PLAT, MAP, SURVEY OR REPORT WAS MADE BY ME OR UNDER MY DIRECT PERSONAL SUPERVISION AND THAT I AM A DULY REGISTERED PROFESSIONAL ENGINEER AND LAND SURVEYOR UNDER THE LAWS OF THE STATE OF IOWA

SIGNED *Charles T. Vance* DATE 6 Feb. 1990
 Charles T. Vance, P.E. & L.S. Iowa Reg. No. 5041

VANCE & HOCHSTETLER, P.C.
 CONSULTING ENGINEERS
 71 JEFFERSON
 WINTERSET, IOWA 50273

TOWN PLAT 2