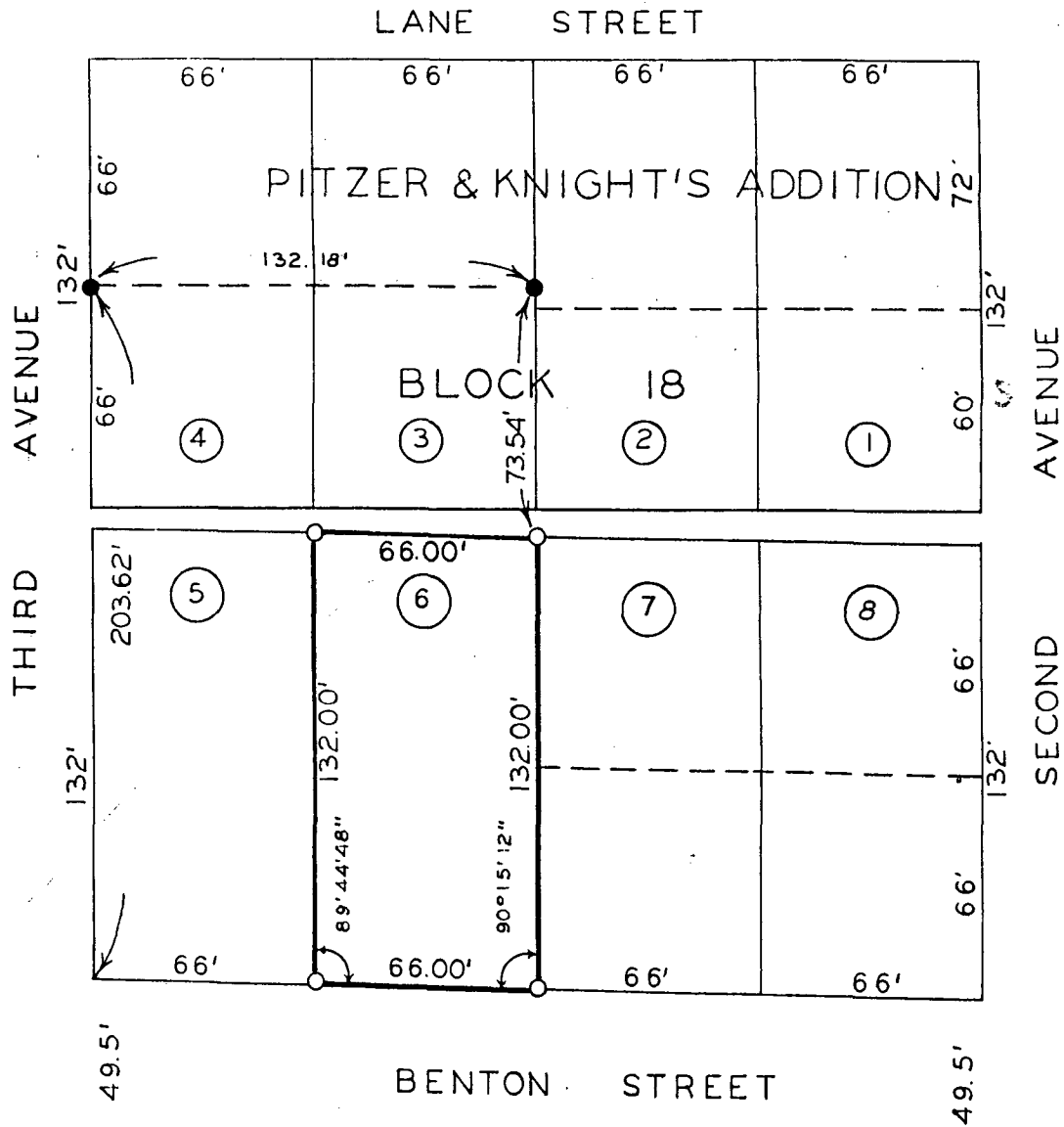


PLAT OF SURVEY MADE FOR JAMES CLANCY
 OF LOT 6, BLOCK 18, PITZER & KNIGHT'S
 ADDITION TO THE CITY OF WINTERSET,
 MADISON COUNTY, IOWA.



ZZL

SCALE: 1" = 50'
 ● FOUND C.I.R. #5041
 ○ SET C.I.R. #5041

Compared

FILED NO. **1120**
 BOOK 2 PAGE 85
 TOWN PLAT
 89 NOV 27 PM 2:47

MARY E. WELTY
 RECORDER
 MADISON COUNTY, IOWA
 Fee \$5.00

I HEREBY CERTIFY THAT THIS PLAN, SPECIFICATION, PLAT, MAP, SURVEY OR REPORT WAS MADE BY ME OR UNDER MY DIRECT PERSONAL SUPERVISION AND THAT I AM A DULY REGISTERED PROFESSIONAL ENGINEER AND LAND SURVEYOR UNDER THE LAWS OF THE STATE OF IOWA
 SIGNED Charles T. Vance DATE 19 Jan 1989
 Charles T. Vance, P.E. & L.S. Iowa Reg. No. 5041

VANCE & HOCHSTETLER, P.C.
 CONSULTING ENGINEERS
 71 JEFFERSON
 WINTERSET, IOWA 50273

TOWN PLAT 2