

PLAT OF SURVEY FOR THE CITY OF WINTERSET OF THE EAST LINE OF LOT 1,
BLOCK 33 IN THE ORIGINAL TOWN PLAT OF WINTERSET, MADISON COUNTY,
IOWA.

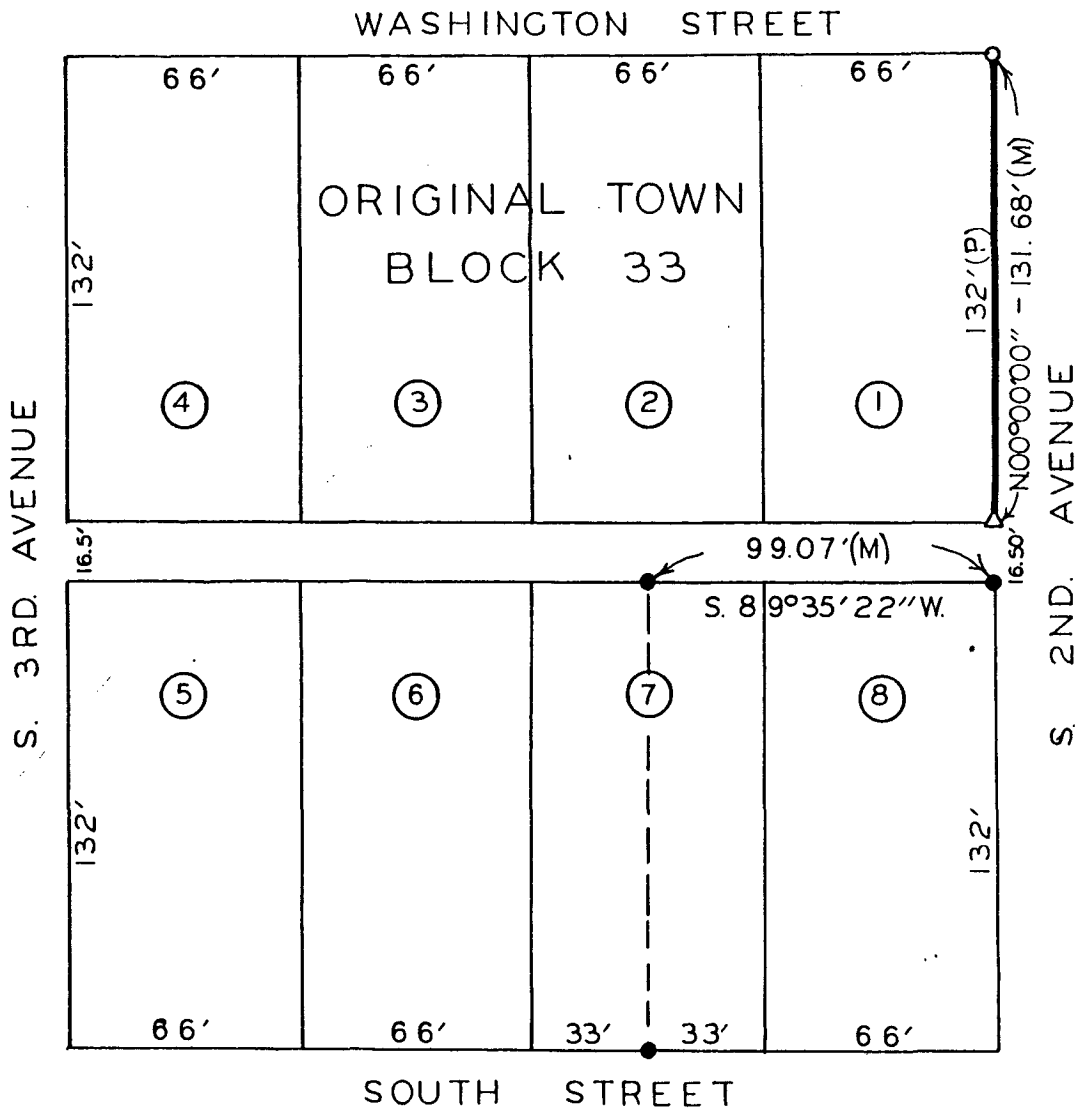
FILED NO. **180**

BOOK 2 PAGE 99

Town Plat

90 JUL 24 AM 11:52

MARY E. WELTY
RECORDER
MADISON COUNTY, IOWA
Fee \$5.00



SCALE: 1" = 50'

- FOUND C.I.R. #6886
- SET C.I.R. #5041
- △ SET P.K. NAIL IN R.R. TIE
- (P) PLATTED DIMENSION
- (M) MEASURED DIMENSION

I HEREBY CERTIFY THAT THIS PLAN, SPECIFICATION, PLAT, MAP, SURVEY OR REPORT WAS MADE BY ME OR UNDER MY DIRECT PERSONAL SUPERVISION AND THAT I AM A DULY REGISTERED PROFESSIONAL ENGINEER AND LAND SURVEYOR UNDER THE LAWS OF THE STATE OF IOWA.

SIGNED Charles T. Vance DATE 19 June 1990
Charles T. Vance, P.E. & L.S. Iowa Reg. No. 5041

VANCE & HOCHSTETLER, P.C.
CONSULTING ENGINEERS
71 JEFFERSON
WINTERSET, IOWA 50273