

COMPUTER
 PLAT OF SURVEY FOR FARMERS COOPERATIVE ELEVATOR COMPANY
 IN PART OF THE CHICAGO, ROCK ISLAND AND PACIFIC RAILROAD
 COMPANY'S STATION GROUNDS IN THE SW ¼ OF SECTION 6, T77N,
 R28W, PART OF LOT 2, BLOCK 8, AND PART OF LOTS 1&11
 BLOCK 16, ORIGINAL TOWN OF EARLHAM, MADISON COUNTY, IOWA.

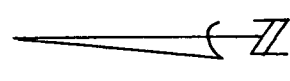
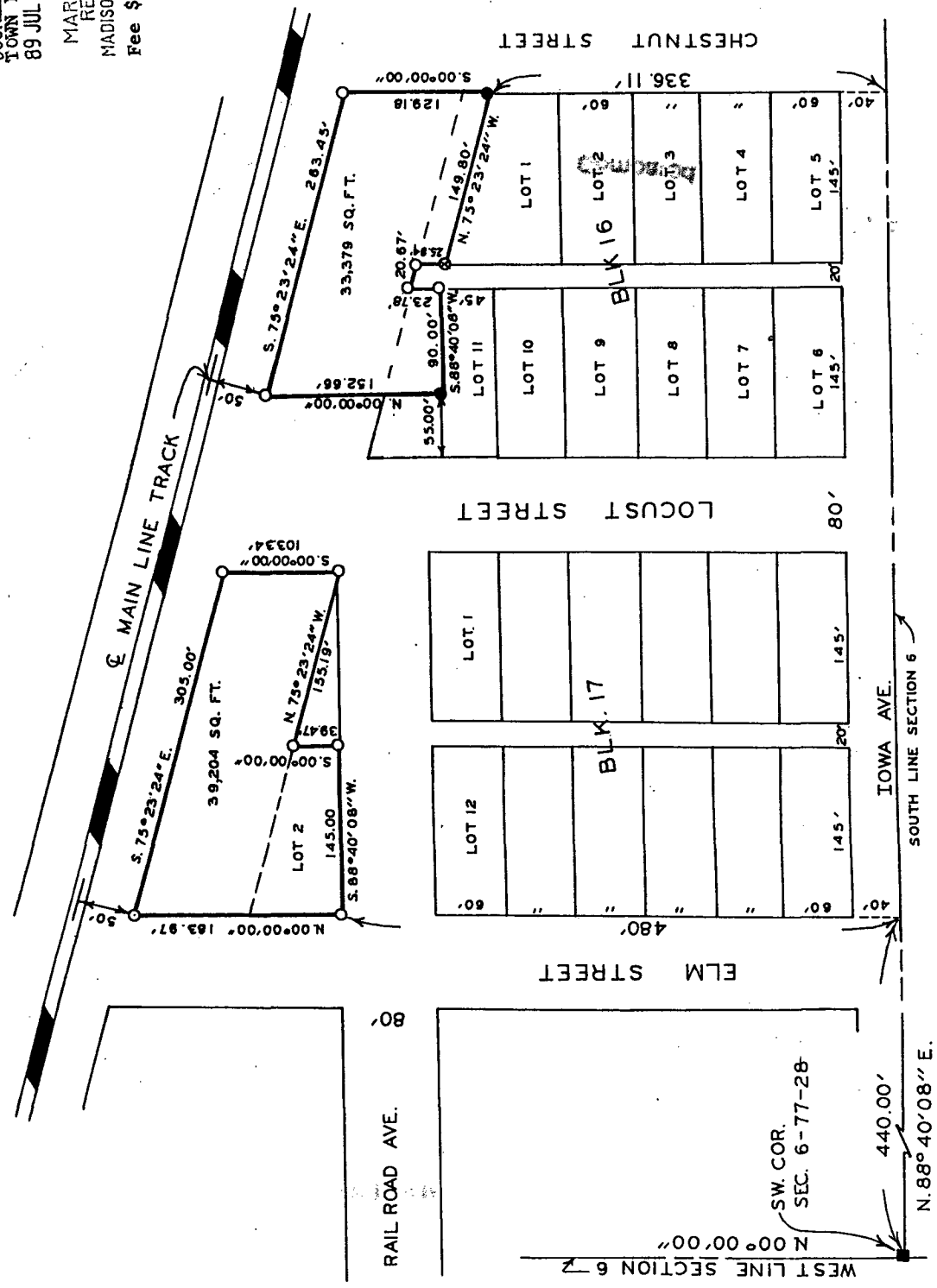
Compared

FILED NO. **81**
 BOOK **2** PAGE **77**
 TOWN **FLAT**
 89 JUL 17 PH 3: 18

MARY E. WELTY
 RECORDER
 MADISON COUNTY, IOWA
 Fee \$5.00

IND. REC. PAGE
 ✓
 ✓
 ✓

TOWN PLAT 2



SCALE: 1" = 100'

- SET C.I.R.#5041
- SET NAIL IN ASPHALT
- ⊙ CUT "X" IN CONCRETE
- FOUND "X" IN PAVING

HEREBY CERTIFY THAT THIS PLAN, SPECIFICATION, PLAT, MAP, SURVEY OR RECORD WAS PREPARED BY ME OR UNDER MY DIRECT SUPERVISION AND I AM A LICENSED PROFESSIONAL SURVEYOR AND LAND SURVEYOR UNDER THE LAWS OF THE STATE OF IOWA.
 SIGNED _____ DATE _____

Charles I. Vance 13 July 1989
 Charles I. Vance, P.E. & L.S. Iowa Reg. No. 5041

VANCE & HOCHSTETLER, P.C.
 CONSULTING ENGINEERS
 WINTERSET, IOWA 50273