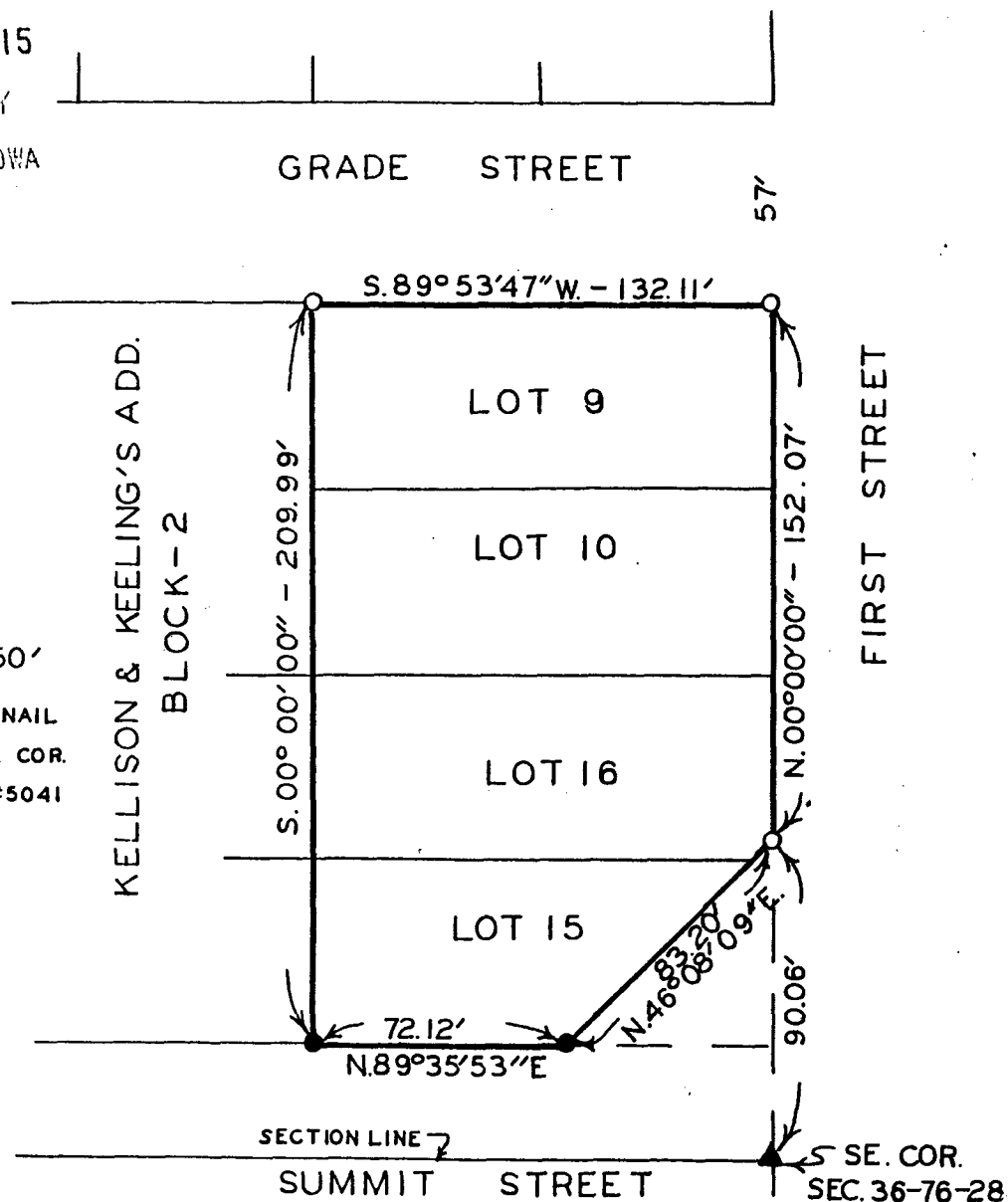


PLAT OF SURVEY FOR KLEEN KAR, INC. IN LOTS 9, 10, 15 AND 16, BLOCK 2, KELLISON & KEELING'S ADDITION TO THE CITY OF WINTERSET, MADISON COUNTY, IOWA.

FILED NO. 597  
 BOOK 2 PAGE 81  
 TOWN PLAT  
 89 SEP 28 AM 10:15

MARY E. WELTY  
 RECORDER  
 MADISON COUNTY, IOWA  
 Fee \$ 5.00



SCALE: 1" = 50'

- ▲ FOUND P.K. NAIL
- FOUND D.O.T. COR.
- SET C.I.R.#5041

DESCRIPTION:

A parcel of land in Lots 9, 10, 15 and 16 of Block 2, Kellison and Keeling's Addition to the City of Winterset, Madison County, Iowa, more particularly described as follows:

Beginning at the Northeast Corner of Lot 9, Block 2, Kellison and Keeling's Addition to the City of Winterset, Madison County, Iowa; thence South 89°53'47" West 132.11 feet to the Northwest Corner of said Lot 9; thence along the west line of Lots 9, 10, 15 and 16 of said Block 2, South 00°00'00" 209.99 feet; thence North 89°35'53" East 72.12 feet; thence North 46°08'09" East 83.20 feet to the east line of said Block 2; thence along said east line, North 00°00'00" 152.07 feet to the point of beginning. Said parcel of land contains 0.596 Acres, more or less.

I HEREBY CERTIFY THAT THIS PLAN, SPECIFICATION, PLAT, MAP, SURVEY OR REPORT WAS MADE BY ME OR UNDER MY DIRECT PERSONAL SUPERVISION AND THAT I AM A DULY REGISTERED PROFESSIONAL ENGINEER AND LAND SURVEYOR UNDER THE LAWS OF THE STATE OF IOWA

SIGNED *Charles T. Vance* DATE *30 Aug 1989*  
 Charles T. Vance, P.E. & L.S. Iowa Reg. No. 5041

VANCE & HOCHSTETLER, P.C.  
 CONSULTING ENGINEERS  
 71 JEFFERSON  
 WINTERSET, IOWA 50273

TOWN PLAT 2