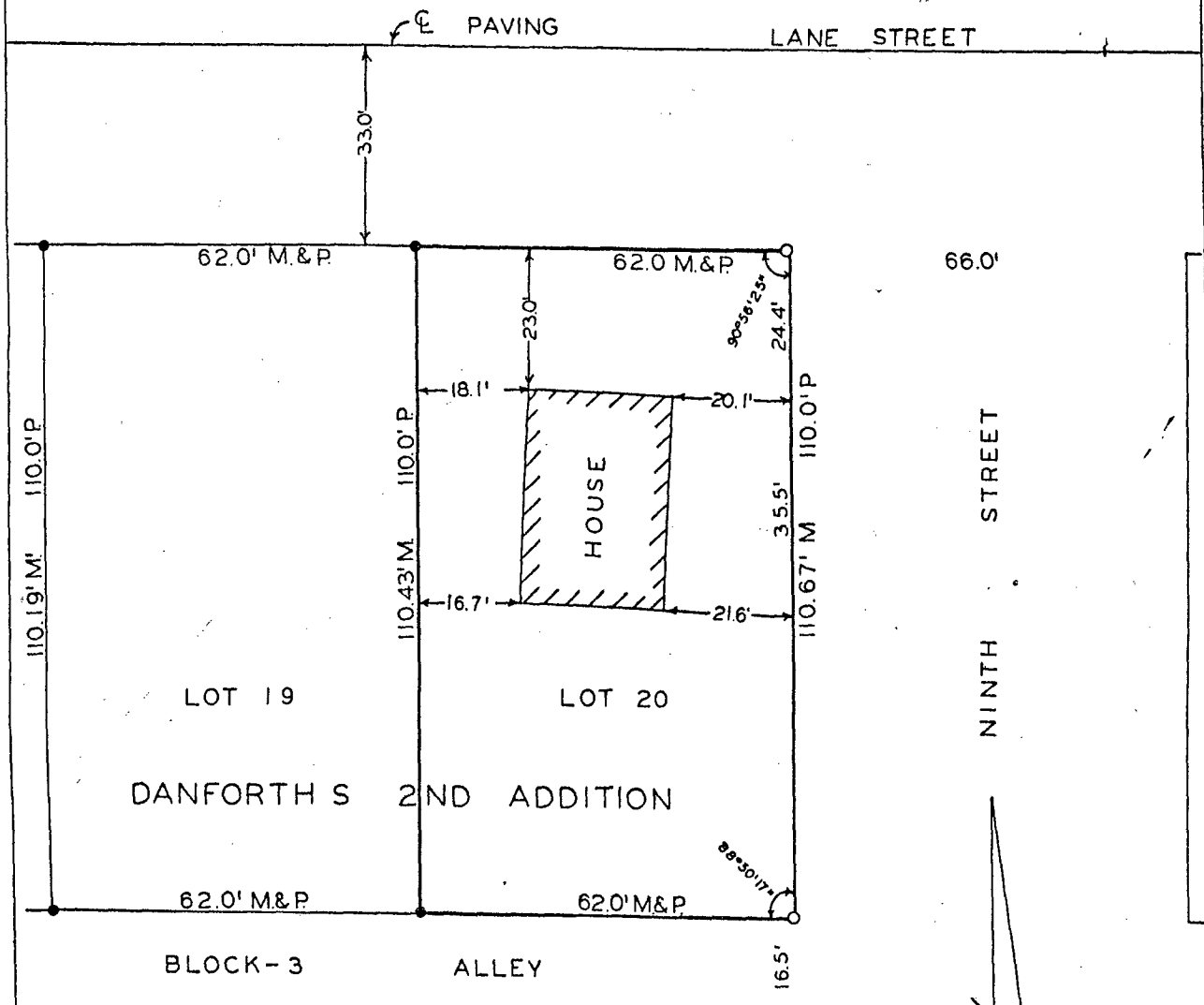


COMPUTER

PLAT OF SURVEY FOR CITY OF WINTERSET  
OF THE EAST LINE OF LOT 20, BLOCK 3,  
DANFORTH'S 2ND ADDITION TO THE CITY OF  
WINTERSET, MADISON COUNTY, IOWA.

FILED NO. **829**  
BOOK 2 PAGE 60  
TOWN PLAT  
1988 OCT 20 PH 2:56

MARY E. WELTY  
RECORDER  
MADISON COUNTY, IOWA  
Fee \$5.00



NINTH STREET



SCALE: 1" = 20'

- FOUND C.I.R. #8034
- SET C.I.R. #5041
- P PLATTED DIMENSION
- M MEASURED DIMENSION

I HEREBY CERTIFY THAT THIS PLAN, SPECIFICATION, PLAT, MAP, SURVEY OR REPORT WAS MADE BY ME OR UNDER MY DIRECT PERSONAL SUPERVISION AND THAT I AM A DULY REGISTERED PROFESSIONAL ENGINEER AND LAND SURVEYOR UNDER THE LAWS OF THE STATE OF IOWA

SIGNED *Charles T. Vance* DATE *22 Sept. 1988*  
Charles T. Vance, P.E. & L.S. Iowa Reg. No. 5041

VANCE & HOCHSTETLER, P.C.  
CONSULTING ENGINEERS  
71 JEFFERSON  
WINTERSET, IOWA 52773