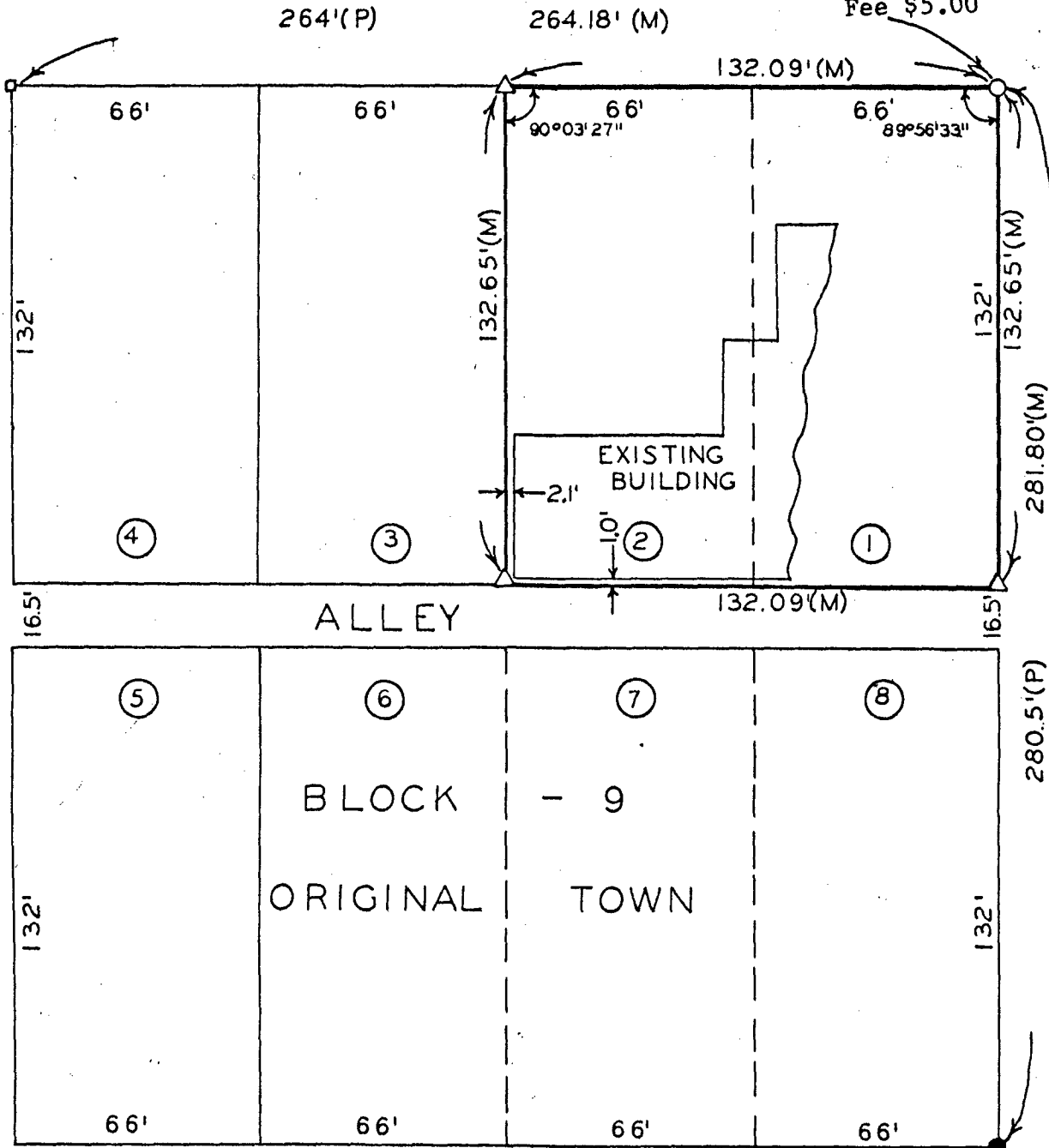


PLAT OF SURVEY FOR FIRST UNITED PRESBYTERIAN CHURCH OF LOTS 1 AND 2, BLOCK 9, ORIGINAL TOWN OF WINTERSET, MADISON COUNTY, IOWA.

FILED NO. **828**
BOOK 2 PAGE 59
TOWN PLAT
1988 OCT 20 PM 2:54

MARY E. WELTY
RECORDER
MADISON COUNTY, IOWA
Fee \$5.00



- SCALE: 1" = 40'
- FOUND 5/8" IRON ROD
 - SET C.I.R.#5041
 - △ CUT "X" IN CONC.
 - SET NAIL
 - (P) PLATTED DIMENSION
 - (M) MEASURED DIMENSION

I HEREBY CERTIFY THAT THIS PLAN, SPECIFICATION, PLAT, MAP, SURVEY OR REPORT WAS MADE BY ME OR UNDER MY DIRECT PERSONAL SUPERVISION AND THAT I AM A DULY REGISTERED PROFESSIONAL ENGINEER AND LAND SURVEYOR UNDER THE LAWS OF THE STATE OF IOWA

SIGNED _____ DATE _____

Charles T. Vance 30 Aug. 1988
Charles T. Vance, P.E. & L.S. Iowa Reg. No. 5041

VANCE & HOCHSTETLER, P.C.
CONSULTING ENGINEERS
71 JEFFERSON
WINTERSET, IOWA 50273