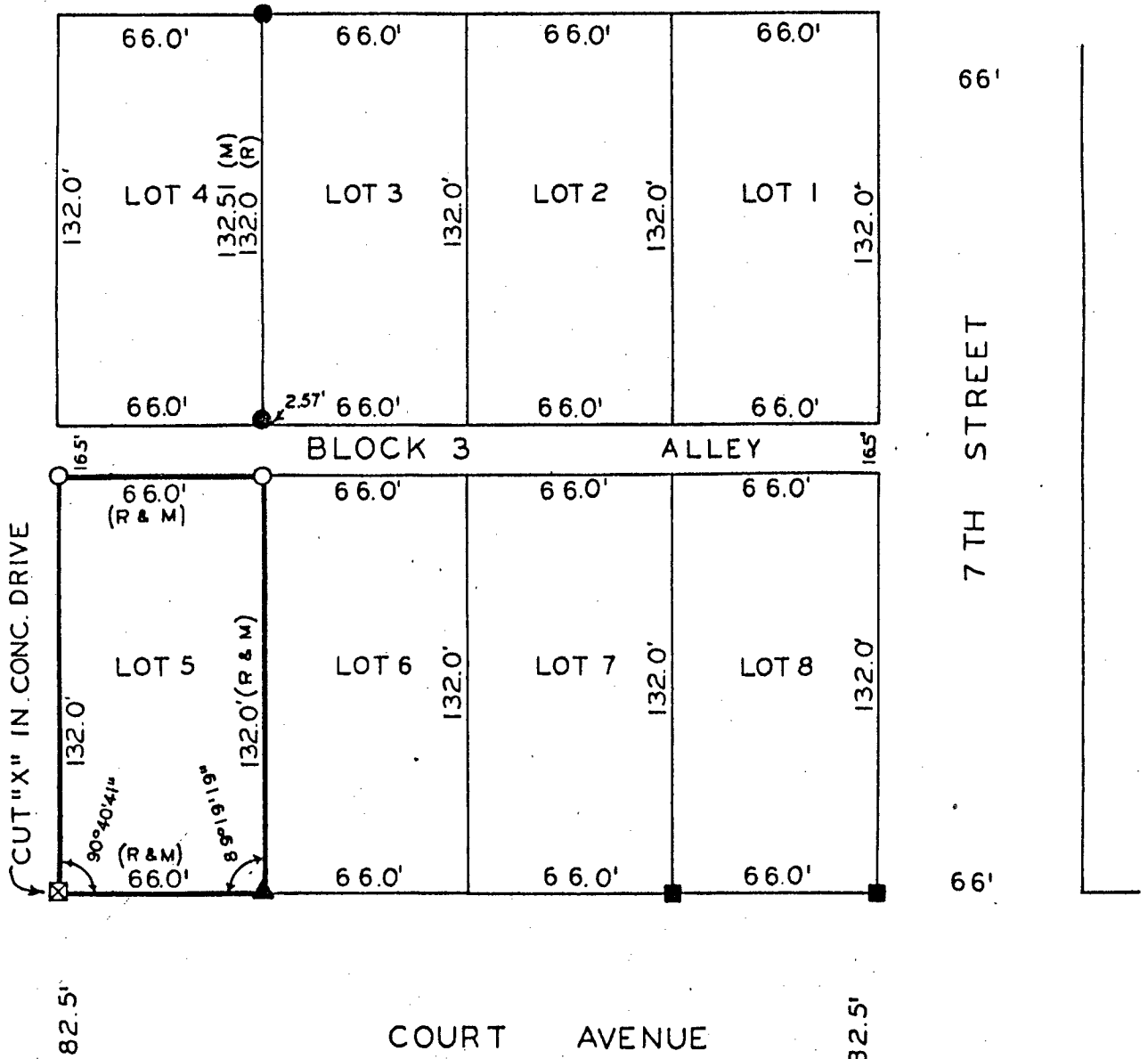


PLAT OF SURVEY FOR GENE TYLER
OF LOT 5, BLOCK 3, LAUGHRIDGE
AND CASSIDAY'S ADDITION TO THE
CITY OF WINTERSET, MADISON COUNTY
IOWA.



- FOUND 3/4" PIPE
- FOUND 60d NAIL
- ▲ FOUND 5/8" IRON ROD
- SET C.I.R. # 5041
- (R) RECORDED DIMENSION
- (M) MEASURED DIMENSION

I HEREBY CERTIFY THAT THIS PLAN, SPECIFICATION, PLAT, MAP, SURVEY OR REPORT WAS MADE BY ME OR UNDER MY DIRECT PERSONAL SUPERVISION AND THAT I AM A DULY REGISTERED PROFESSIONAL ENGINEER AND LAND SURVEYOR UNDER THE LAWS OF THE STATE OF IOWA

SIGNED Charles T. Vance 16 Aug. 1988
DATE
Charles T. Vance, P.E. & L.S. Iowa Reg. No. 5041

SCALE: 1" = 50'

Compared

COMPUTER

IND.
REC.
PAGE

FILED NO. **418**
BOOK 2 PAGE 54
TOWN PLAT
1988 AUG 24 PM 3:20

MARY E. WELTY
RECORDER
MADISON COUNTY, IOWA
Fee \$5.00

VANCE & HOCHSTETLER, P.C.
CONSULTING ENGINEERS
71 JEFFERSON
WINTERSET, IOWA 50273