

Compare

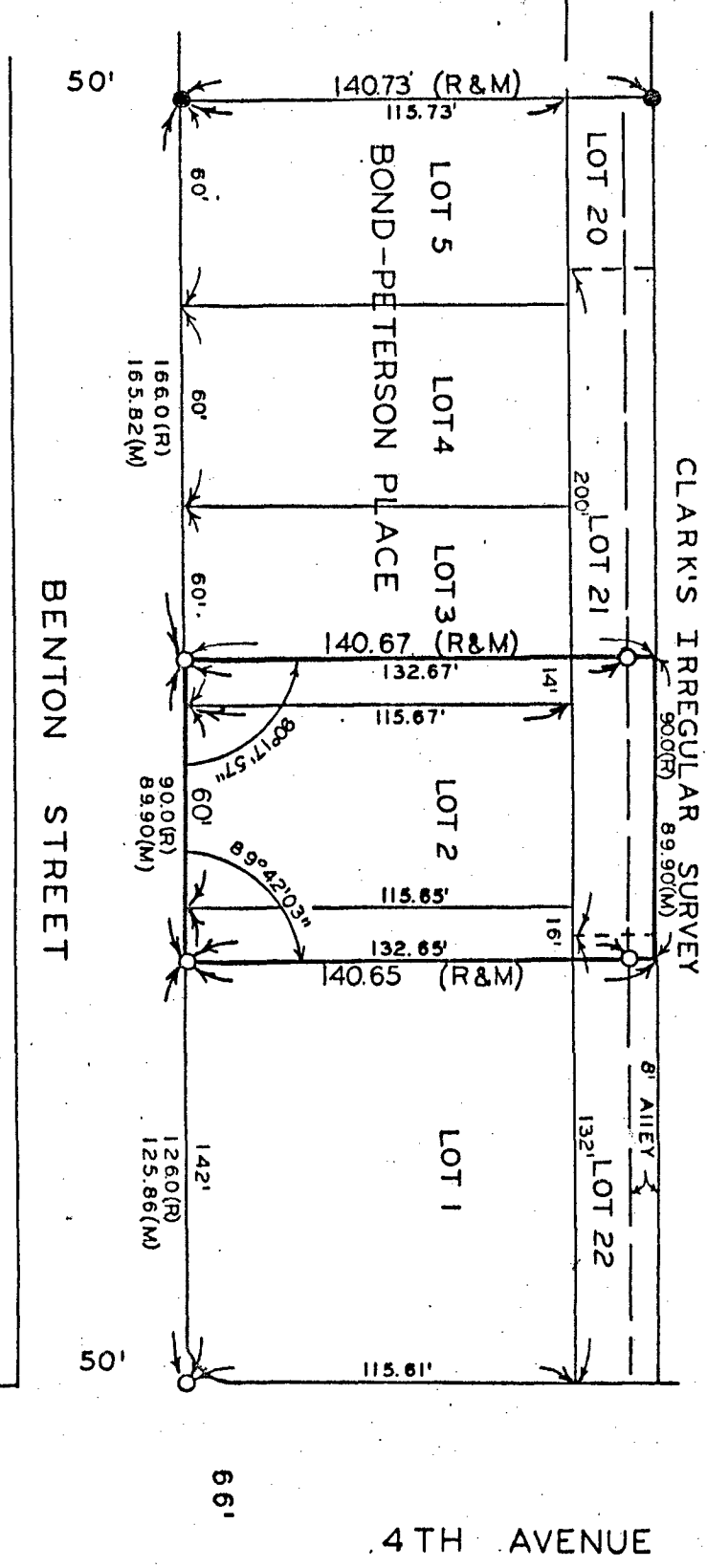
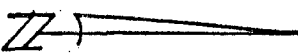
FILED No. 316
BOOK 2 PAGE 52
TOWN PLAT
1988 AUG -8 PH 3:21

MARY E. WELTY
RECORDER
MADISON COUNTY, IOWA
Fee \$5.00

PLAT OF SURVEY FOR HAZEL STRAIN OF THE N. 25' OF THE W. 6' OF LOT 22 AND THE N. 25' OF THE E. 84' OF LOT 21 OF CLARK'S IRREGULAR SURVEY AN ADDITION TO THE CITY OF WINTERSSET; AND LOT 2, THE W. 16' OF LOT 1 AND THE E. 14' OF LOT 3 OF BOND PETERSON PLACE AN ADDITION TO THE CITY OF WINTERSSET, MADISON COUNTY, IOWA.

- FOUND 5/8" PIPE
- SET C.I.R. # 5041
- (R) RECORDED DIMENSION
- (M) MEASURED DIMENSION

SCALE: 1" = 50'



I HEREBY CERTIFY THAT THIS PLAN, SPECIFICATION, PLAT, MAP, SURVEY OR REPORT WAS MADE BY ME OR UNDER MY DIRECT PERSONAL SUPERVISION AND THAT I AM A DULY REGISTERED PROFESSIONAL ENGINEER AND LAND SURVEYOR UNDER THE LAWS OF THE STATE OF IOWA.
SIGNED _____ DATE _____

Charles T. Vance 25 July 1988
Charles T. Vance, P.E. & L.S. Iowa Reg. No. 5041

VANCE & HOCHSTETLER, P.C.
CONSULTING ENGINEERS
WINTERSSET, IOWA 50273