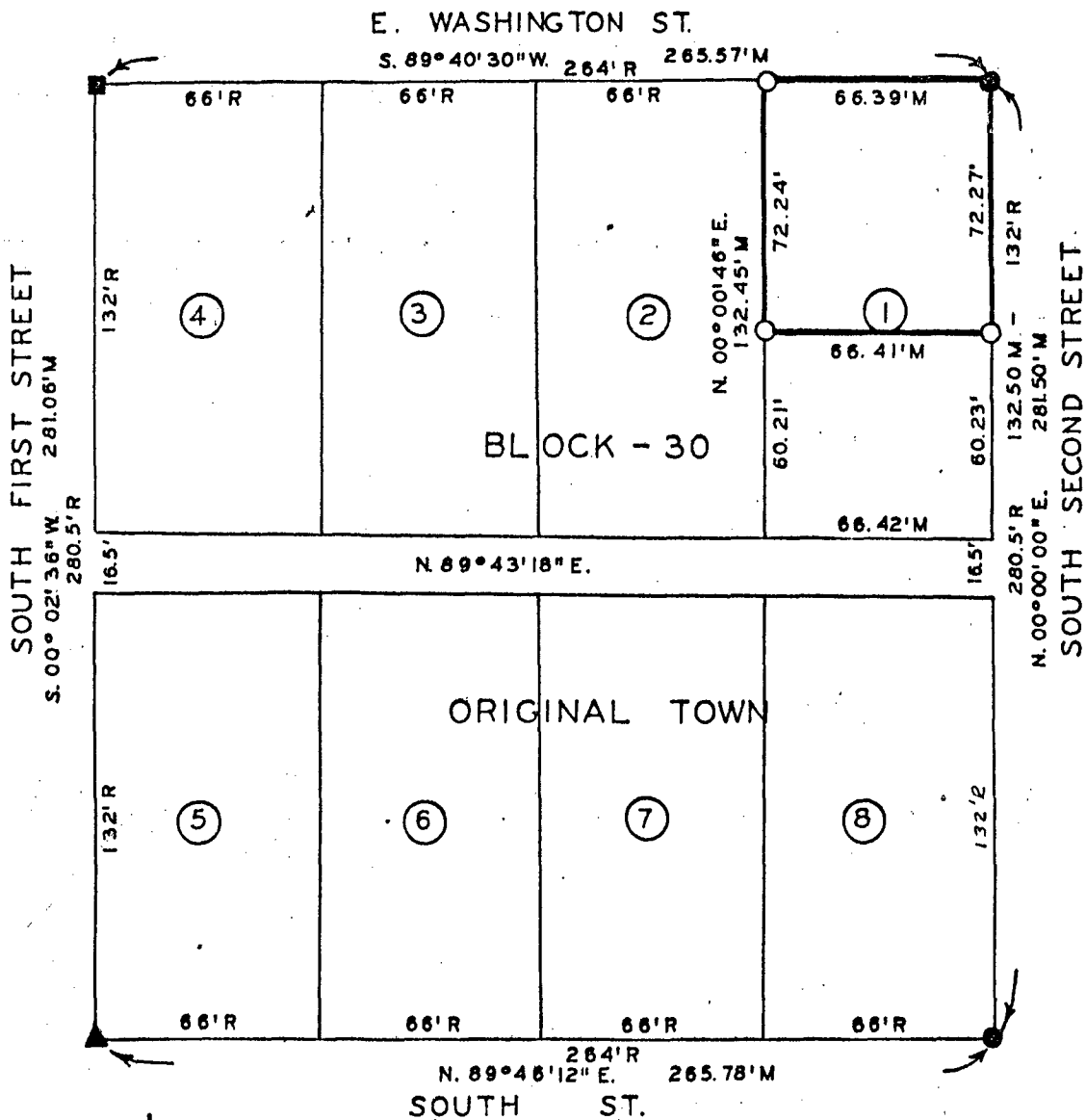


PLAT OF SURVEY FOR JOHN WAYNE BIRTHPLACE
 SOCIETY OF THE NORTH 72 FEET OF LOT 1,
 BLOCK 30 IN ORIGINAL TOWN OF WINTERSET,
 MADISON COUNTY, IOWA.



SCALE: 1" = 50'

- ▲ FOUND 1/8" ROD IN CONC. & LEAD
- FOUND CUT "X"
- FOUND C.I.R. #8034
- SET C.I.R. # 5041
- R RECORD DIST.
- M MEASURED DIST.

FILED NO. **315**
 BOOK 2 PAGE 51
 TOWN PLAT
 1988 AUG -8 PM 3:20

MARY E. WELTY
 RECORDER
 MADISON COUNTY, IOWA
 Fee \$5.00

I HEREBY CERTIFY THAT THIS PLAN, SPECIFICATION, PLAT, MAP, SURVEY OR REPORT WAS MADE BY ME OR UNDER MY DIRECT PERSONAL SUPERVISION AND THAT I AM A DULY REGISTERED PROFESSIONAL ENGINEER AND LAND SURVEYOR UNDER THE LAWS OF THE STATE OF IOWA.

SIGNED *Charles T. Vance* 27 July 1988
 DATE
 Charles T. Vance, P.E. & L.S. Iowa Reg. No. 5041

VANCE & HOCHSTETLER, P.C.
 CONSULTING ENGINEERS
 71 JEFFERSON
 WINTERSET, IOWA 50273