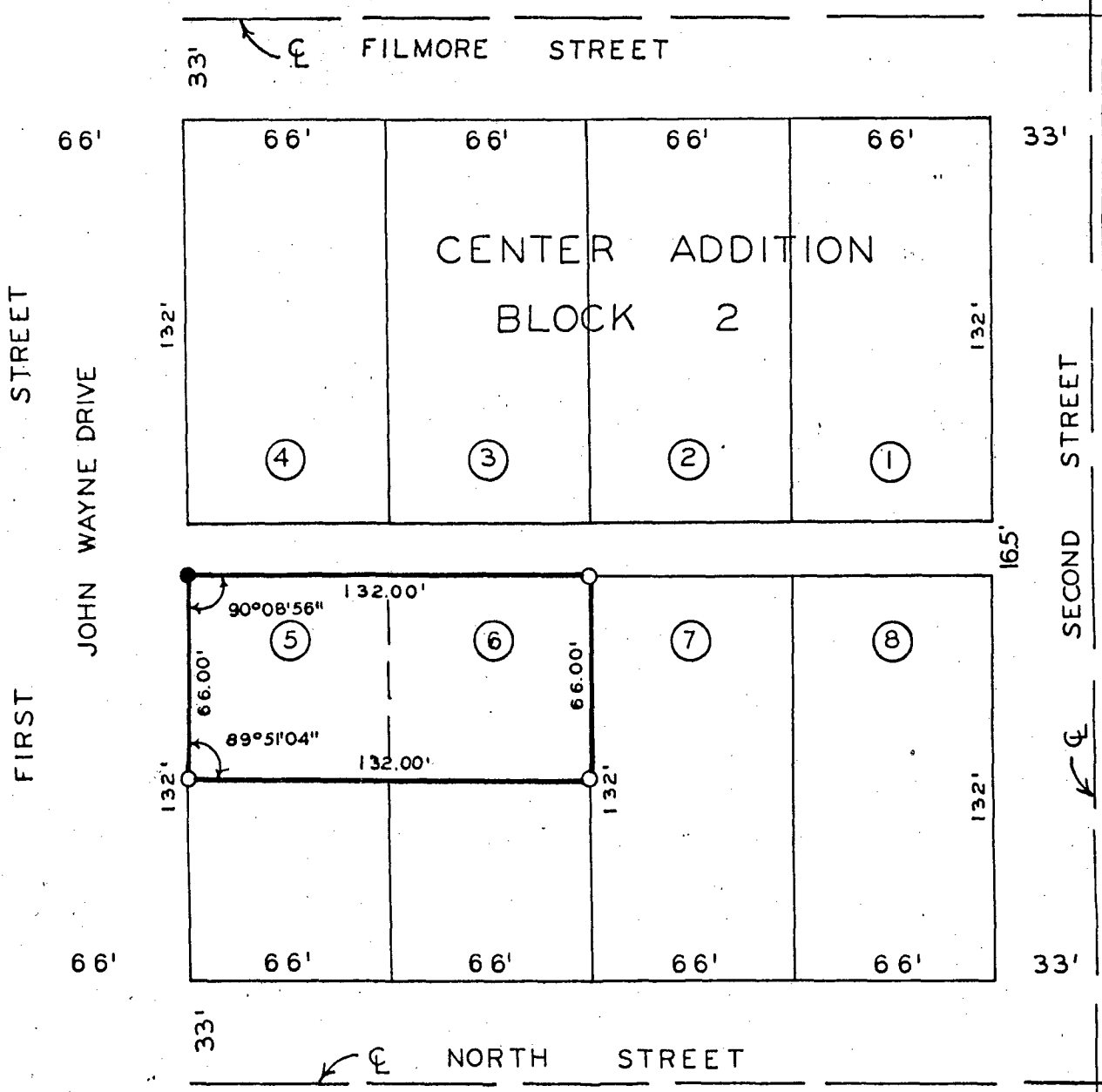


PLAT OF SURVEY FOR WILBUR FORSYTH OF THE NORTH HALF (N.½) OF LOTS 5 AND 6 IN BLOCK 2 OF CENTER ADDITION TO THE CITY OF WINTerset, MADISON COUNTY, IOWA.



SCALE: 1" = 50'  
 ○ SET C.I.R. # 5041  
 ● SET R.R. SPIKE

Compared COMPUTER  
 FILED NO. 114  
 BOOK 2 PAGE 50  
 Town Plat  
 1988 JUL 12 PH 4:06  
 MARY E. WELTY  
 RECORDER  
 MADISON COUNTY, IOWA  
 Fee \$5.00

I HEREBY CERTIFY THAT THIS PLAN, SPECIFICATION, PLAT, MAP, SURVEY OR REPORT WAS MADE BY ME OR UNDER MY DIRECT PERSONAL SUPERVISION AND THAT I AM A DULY REGISTERED PROFESSIONAL ENGINEER AND LAND SURVEYOR UNDER THE LAWS OF THE STATE OF IOWA  
 SIGNED *Charles T. Vance* DATE *10 June 1988*  
 Charles T. Vance, P.E. & L.S. Iowa Reg. No. 5041

VANCE & HOCHSTETLER, P.C.  
 CONSULTING ENGINEERS  
 WINTerset, IOWA 50273