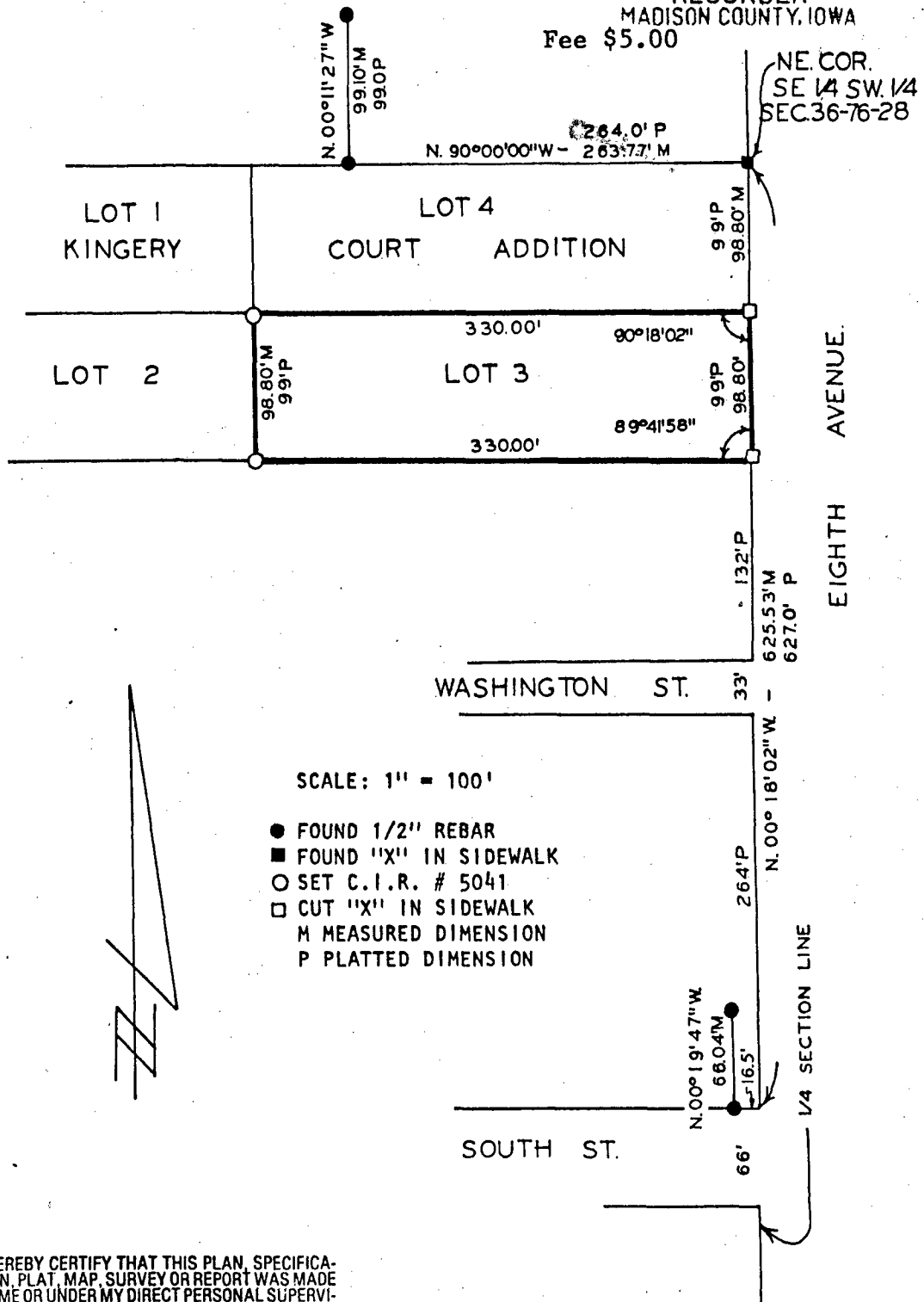


PLAT OF SURVEY FOR ROBERT L. & ANNETTE REED  
 CHRISTIANSEN OF LOT 3 IN KINGERY COURT ADDITION  
 TO THE CITY OF WINTERSET, MADISON COUNTY, IOWA

COMPUTER

FILED NO. 113  
 BOOK 2 PAGE 49  
 Town Plat  
 1988 JUL 12 PM 4:05

MARY E. WELTY  
 RECORDER  
 MADISON COUNTY, IOWA  
 Fee \$5.00



SCALE: 1" = 100'

- FOUND 1/2" REBAR
- FOUND "X" IN SIDEWALK
- SET C.I.R. # 5041
- CUT "X" IN SIDEWALK
- M MEASURED DIMENSION
- P PLATTED DIMENSION



I HEREBY CERTIFY THAT THIS PLAN, SPECIFICATION, PLAT, MAP, SURVEY OR REPORT WAS MADE BY ME OR UNDER MY DIRECT PERSONAL SUPERVISION AND THAT I AM A DULY REGISTERED PROFESSIONAL ENGINEER AND LAND SURVEYOR UNDER THE LAWS OF THE STATE OF IOWA

SIGNED Charles T. Vance DATE 22 June 1988  
 Charles T. Vance, P.E. & L.S. Iowa Reg. No. 5041

VANCE & HOCHSTETLER, P.C.  
 CONSULTING ENGINEERS  
 71 JEFFERSON  
 WINTERSET, IOWA 50273